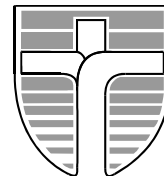




# John Paul College, Rotorua

Whitworth Road, Rotorua. [www.jpc.co.nz](http://www.jpc.co.nz) Ph: 07 3478 795 Fx: 07 3461 271  
**A WEEKLY NEWSLETTER FOR THE JOHN PAUL COLLEGE COMMUNITY**  
 Term 1, Issue 6 24<sup>th</sup> February 2014



*Ma te pono Me te aroha – Through Faith and Love*  
 2014 School Theme : 'Who Dares Wins'

**Dear Parents/ Caregivers**

Kia Ora, Malo e Lelei, Talofa, Greetings

**SCHOOL ASSESSMENTS**

Your children will by now have received a schedule of assessments, including due dates. It is essential that as parents, you take an interest in them, particularly due dates. Last year we had a significant number of senior students who did not meet deadlines due to poor time management

**SCHOOL FEES**

I extend my sincere gratitude to all parents who paid school fees last year. The reality is that government funding falls well short of providing the high quality education you have come to expect from John Paul College.

School fees are a vital part of our excellent curriculum delivery and pastoral care at John Paul College. Please give this due consideration when school invoices are sent out.

**STUDENT SUCCESSES**

Email words and a photo (if available) to Sue Rowles on [sue.rowles@jpc.school.nz](mailto:sue.rowles@jpc.school.nz) if your child has done well in sports, co-curricular or community service so we can share their success with the school and wider community.

God bless

**Patrick Walsh**  
 Principal

## MUFTI DAY : WEDNESDAY 26<sup>TH</sup> FEBRUARY

### PAYMENT OF \$2 MINIMUM TO RAISE FUNDS FOR THE FULL FIL VAN

**FROM THE SICKBAY**

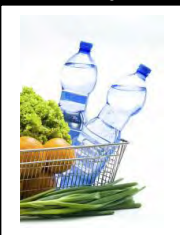
The **HPV Information** has been distributed on February 11<sup>th</sup>; please ensure all forms are returned to the nurse by Tuesday 25<sup>th</sup>. If parents have any queries, please contact Cathy on [nurse@jpc.school.nz](mailto:nurse@jpc.school.nz)

**The School Doctor** will return for student appointments at the end of March.

**Fluid consumption**

As the summer heat continues please ensure your child is attending school with a bottle of water and encourage them to keep up their water intake during the day as dehydration can lead to loss of concentration and headaches.

*Mrs C Flavell - School Nurse*



The mufti day this Wednesday is in support of the Full Fill van, which provides food and a hot drink to those in need of this in our community. Please bring your \$2 and wear mufti to support this worthwhile cause.

At present the van is off the road due to lack of money. The John Paul College community are pledging to support this van as part of our commitment to Social Justice in our local community.

If any families wish to donate to this worthy cause with a family donation of Milo, Chicken Noodle Soup and/or bread, we would welcome your support.

**Veronica Aislabie**



\$ \$

## HOMWORK CENTRE

**3.30-5.00pm Mondays & Wednesdays**

**Mondays: Literacy/ English Support**

**Wednesdays: Numeracy/ Maths/ Science Support**

*Students will be supported with all homework on either day.*

**A snack is provided outside the library, from 3.15-3.30, for those students who attend the Homework Centre**

*Teachers will be available to assist with homework & extra tuition*

**Mrs M Stokes**

[margaret.stokes@jpc.school.nz](mailto:margaret.stokes@jpc.school.nz)

## FROM THE DAILY NOTICES

**Encourage your child to listen/ read the Daily Notices at**

**morning form time for notices on sports / music etc meetings**

**CHESS CLUB** Friday lunchtimes in C5 *students can enjoy their lunch while playing a game of chess (Mrs P Walsh)*

**BEEKEEPING CLUB** meet Friday lunchtimes in L3 (*Mr M Synge*)

## THE UNIFORM SHOP IS OPEN

**THIS WEEK**

**MONDAY TO THURSDAY**

**8.00a.m to 4.00p.m**

**Term time only**

**CLOSED FRIDAYS AND**

**Wednesday 9.00a.m to**

**11.00a.m**

## YEAR 8 PILGRIMAGE TO CATHOLIC SITES IN ROTORUA: MARCH 4<sup>TH</sup>, 6<sup>TH</sup> & 7<sup>TH</sup> (COMPULSORY)

**Tuesday 4 March: 8CW (Anita Matthews) and 8MB ( John Peters)**

**Thursday 6 March: 8PR (Marie Hepi) and 8JR (Gillian Cook)**

**Friday 7 March: 8DL and 8WT (Lorraine Dobson) and Veronica Aislabie**

**Bus departs JPC at 8.45a.m (*the Pilgrimage is compulsory*)**

A Pilgrimage is a journey made to a particular place for spiritual and religious reasons. For Christians they are opportunities to seek guidance for direction in life and to thank God for blessings received.

**The places of interest for the Year 8 Pilgrimage are:**

- Pukeroa Hill (Hospital Hill): where the first Catholic church was built. Today it is the site of the Hospital Chapel.
- St Michael's Catholic Church: The church where the Mill Hill Priests began their missionary work in 1888.
- St Mary's Catholic Church: The second church built in Rotorua in 1954 as the population of Catholics grew in Rotorua.
- Tyburn Monastery: The Tyburn Nuns have recently joined the community of Rotorua. (Since May 2009). They offer their place as an oasis of prayer and reflection for people particularly the Hamilton Diocese.



The weekly Mass at John Paul College starts again this coming Wednesday, 8.15am, in the MacKillop Chapel (Kahu St). All are welcome. If the Mass is ever cancelled for whatever

reason (e.g. Ash Wednesday next week), we will endeavour to let you know via the college newsletter.

## CREATIONFEST

Entries are open for students now!

July 15-19

3 Options

Short Film /Performance /Wearable Arts

<http://www.creationfest.co.nz>

Please see Mrs Sarich-Dunn in C4 for more information.

**Congratulations to Alec Johnson** (10RY) who competed in Waikato Bay of Plenty Senior Track and Field Championship on the weekend in the Under 16 Grade.



He got Gold in the Discus, Silver in the 200m, Bronze in the 100m and Bronze in the Shotput.

## Congratulations to Mitchell Slade

who has been invited to submit his NCEA level 3 Photography portfolio in this year's NZQA Top Art exhibition which will tour the country in June.

Only 60 portfolios throughout New Zealand achieved

Excellence in NCEA level 3 in

2013 have been invited to be part of the tour.



**2014 TERM 1  
CALENDAR OF EVENTS**

**February**

25<sup>th</sup> Year 9-13 Athletics  
26<sup>th</sup> Y12/13 Photography Trip  
27<sup>th</sup>-Mar 3<sup>rd</sup> Year 8 Beach Ed Trip

**March**

4/6<sup>th</sup> Year 8 Pilgrimage  
5<sup>th</sup> Ash Wednesday Liturgy  
12<sup>th</sup> Year 13 Retreat (*compulsory*)  
17/24<sup>th</sup> Year 9 Retreat (*compulsory*)  
19<sup>th</sup> Yr 13 Waikato Uni Presentation  
20<sup>th</sup> Yr 12 Parish Mass (*compulsory*)  
25-28<sup>th</sup> NZSS Basketball - Auckland  
25<sup>th</sup> Signum Fidei Mtg 4-6pm  
27-30<sup>th</sup> NISS Waterpolo Quals-Auckland  
28<sup>th</sup> Interim Reports issued

**April**

1<sup>st</sup> Year 7 Immunisation  
1<sup>st</sup> Yr 7-10 Report Evening  
3<sup>rd</sup> School photos  
3-6<sup>th</sup> Yr 13 PE Trip  
3<sup>rd</sup> Yrs 11-13 Report Evening  
14<sup>th</sup> Yr 11 Road Safety  
16<sup>th</sup> Business Studies China Trip  
17<sup>th</sup> Stations of the Cross  
17<sup>th</sup> Last day of Term 1

**OTHER HAPPENINGS:**

**JPC Mass** – every Wednesday – 8.15am – 8.45am in the Chapel  
**Mountain biking** – Wednesdays 4.00-5.30pm  
[paul.billing@jpc.school.nz](mailto:paul.billing@jpc.school.nz)  
**Claytarget Practice** Weds 3.30-5pm  
[sue.rowles@jpc.school.nz](mailto:sue.rowles@jpc.school.nz)  
**Signum Fidei Retreat** –10am-4pm 1<sup>st</sup> March – Tyburn Monastery  
**Year 12 Physics Assessment** 3<sup>rd</sup> March [paul.billing@jpc.school.nz](mailto:paul.billing@jpc.school.nz)  
**NISS Rowing Champs** – 4<sup>th</sup>-9<sup>th</sup> March  
[maree.stewart@jpc.school.nz](mailto:maree.stewart@jpc.school.nz)  
**NZSS Rowing Champs**-Twizel- 24-30<sup>th</sup> March  
**Mid Island Athletics** – 8.00am-3.00pm [Arthur.faulkner@jpc.school.nz](mailto:Arthur.faulkner@jpc.school.nz)  
**Year 13 Physics Practical** 7<sup>th</sup> Mar [paul.billing@jpc.school.nz](mailto:paul.billing@jpc.school.nz)  
**Safety in Action** 8.30am-3pm [Sheryl.hewitson@jpc.school.nz](mailto:Sheryl.hewitson@jpc.school.nz)  
**Year 8 Girls only** – HPV immunisation 18<sup>th</sup> March  
[nurse@jpc.school.nz](mailto:nurse@jpc.school.nz)  
**NISS Athletics** – 5&6 April Auckland  
**Blood Donors** – 7<sup>th</sup> April – [paul.johnson@jpc.school.nz](mailto:paul.johnson@jpc.school.nz)  
**BOP Lawn Bowls** – 8/9<sup>th</sup> April [Arthur.faulkner@jpc.school.nz](mailto:Arthur.faulkner@jpc.school.nz)

**Years 11/12**

**Save A Mate Programme**

**10-17<sup>th</sup> March**

Each form class will attend this drug and alcohol education programme for the 90-minute session at some time during the six days.

**PIANO FOR SALE:**

**KAWAI MP120**

\$1800 o.n.o

Ring Julia evenings 345 5617 or  
3478 795 xtn 8850



**SACRAMENT OF BAPTISM**

The rite of Baptism is the first of the seven sacraments of the Catholic Church and marks the beginning of a person's journey in faith with God.

If you would like your son / daughter to receive the Sacrament of Baptism, please leave a message with your child's name and form class on my voicemail Ph 3478795 extn 8867 or email [Bernadette.fredricksen@jpc.school.nz](mailto:Bernadette.fredricksen@jpc.school.nz)

**GALA DAY**

**St. Mary's School, Rotorua**

**Thursday 27<sup>th</sup> FEBRUARY**

**4.00pm - 7.00pm**

**Rain, Hail or Shine**

**SPEEDY SIGNS**

**ROTORUA**

**LESSONS HAVE COMMENCED  
WORKBOOKS ARE ONLY AVAILABLE FROM OFFICEMAX ON FENTON STREET BEFORE THE END OF FEBRUARY**

From then the workbooks will only be available by purchasing online at

[www.myschool.co.nz](http://www.myschool.co.nz)

**YEAR 10 HEALTH BOOKS AVAILABLE AT THE UNIFORM SHOP**



**INTERNATIONAL LASALLIAN YOUTH GATHERING:  
BRISBANE: JULY 7<sup>th</sup> – 11<sup>th</sup> FOR Years 12 & 13**

There are 10 places available for Year 12-13 students from JPC at the Lasallian Youth Gathering in Brisbane in July. Students from all the Lasallian schools in Australia and New Zealand will be attending. The cost is \$A375 for registration, which includes meals, accommodation and activities. The cost of airfares will be about \$700.

Register your child's interest with Mr Kowalewski [owen.kowalewski@jpc.school.nz](mailto:owen.kowalewski@jpc.school.nz). More information will be available shortly

**DONATIONS GRATEFULLY ACCEPTED**

The SVDP Fulfill Van currently **requires Milo, chicken noodle soup and bread**. Classroom collection times are Tuesday and Friday mornings at form time. Bread can be delivered to Mrs Cook on Wednesday or Thursday to her classroom, C9. House points awarded for food items: 20 points per item or 100 points for 4.

The usual can collection is on hold for now, while these items are being collected.



Also needed, **pre-loved greeting cards and Christmas cards**.

A huge **'Thank you'** to Warehouse Stationery for granting a 20% discount for card making supplies

**ROTORUA BE PART OF THE 50<sup>TH</sup> ROTORUA MARATHON CELEBRATIONS**

Once registered, children receive an official Rotorua Mini Marathon Passport in which they track their progress at completing 40km of running/walking in the build up to the event. They then have the opportunity to complete the final 2.1km of their Marathon on Wednesday 16<sup>th</sup> April 2014 along the actual Rotorua Marathon Course. There will be Spot Prizes - and all competitors that complete the final 2.1km course on Wednesday 16 April will receive an Official Certificate of completion!

When: Wednesday 16<sup>th</sup> April 2014 (final 2.1km)  
Where: Energy Events Centre Rotorua  
Who: All Primary & Intermediate aged children - Year 1-8  
Cost: \$5 Entry per child  
Entries close: Wednesday 26<sup>th</sup> March 2014

Entry form /permission slip available at Mr Faulkner's Office, located at the JPC Gym.  
Or email: [Arthur.faulkner@jpc.school.nz](mailto:Arthur.faulkner@jpc.school.nz), for a form.

**SETFREE YOUTH FESTIVAL**

**Years 9-13  
11<sup>th</sup> – 13<sup>th</sup> April**

The Setfree Youth Festival is an amazing festival for our students to attend, to make new friends with students from other Hamilton Diocese schools and enjoy a huge range of Christian-based activities.

Students will travel by bus from JPC at 4.30pm, Friday 11<sup>th</sup> April and return at 3pm on Sunday 13<sup>th</sup> April.

All queries to Mr Kowalewski

[Owen.kowalewski@jpc.school.nz](mailto:Owen.kowalewski@jpc.school.nz)

**TWEENS & TEENS PARENTING COURSES**

**Tweens & Teens Course (12+) Day Course Thursday  
6 March 2014 12.30 pm to 2.30 pm  
At St John's Church, Cnr Victoria & Ranolf Streets,  
Rotorua**

**Tweens & Teens Course (12+) Night Course  
Wednesday 5 March 2014 7.00 pm to 9.00 pm  
The Whare, John Paul College, Whitworth Road**

**Dee Horne**

The Parenting Place Coordinator Rotorua The  
Parenting Place | **Family is Everything** |

07 345 5447 | 027 6139067

**TRUSTPOWER MASHUP COMPETITION**

The 2014 Trustpower Mashup competition is set for the weekend of 5 and 6 April this year at the Bongard Campus of BOP Polytechnic in Tauranga.

- Is there an entry fee? No
- What do teachers have to do? Encourage the students to enter - you're welcome to attend the event but we have loads of adult supervision so you don't need to be there with the students
- What's in it for the students? Massive learning opportunities in IT skills, marketing and business planning .... plus the chance to win some of the \$2000 prize money
- Do they need to have these skills already? No - we have business and IT mentors to help them but it would be useful for one person in each team to have good IT skills
- Where do we find more information? The Mashup website [www.mashup.co.nz](http://www.mashup.co.nz)
- Is this new? No, this is the fourth Mashup in the Bay of Plenty and last year we also ran one in Christchurch

Teams must be registered with Mrs Dobson

[Lorraine.dobson@jpc.school.nz](mailto:Lorraine.dobson@jpc.school.nz)

**NETBALL NEWS**

The 2<sup>nd</sup> Netball Umpiring course will be held on Saturday 1<sup>st</sup> and Sunday 2<sup>nd</sup> March, from 10am-3pm at the Rotorua Netball Courts

All players are expected to attend. Each team needs two umpires; no umpires, no games

## NEWS FROM THE PTA

The PTA wish to thank all parents/caregivers for their support and contribution to our fundraising during 2013

During the year, the PTA raised, with your support, \$29,000, of this \$26,000 was donated back to the school, with the remainder staying as a 'float'.

Our major fundraisers were:

- Work Choice Day \$11,000
- PTA Raffle \$5,000
- PTA Quiz Night \$2,000
- Art Exhibition \$3,000

**The AGM & next meeting will be held in the Staffroom on Tuesday March 18<sup>th</sup> commencing at 7pm with a wine and cheese get-together before the AGM at 7.30pm All members of the JPC community are welcome to attend**

Amongst other financial assistance, we have contributed \$15,000 to the new technology block, \$5,000 to the new bus shelter which is currently under construction, \$1,500 for a school defibrillator, \$2,800 to the school prizegiving.

Our annual raffle will be distributed to all families within the next two weeks and will raise funds for school co-curricular activities.

We will hold a 'Winter' 2<sup>nd</sup> hand uniform sale before the end of this term. If you have any unused, 'undersized' or 'oversized' uniforms to donate, please bring them into the main office for re-sale. Thank you for the generous donations of second hand uniforms already received. Money raised from the sales are donated back to the JPC Hardship Fund.

Thank you for your continued support. New members are very welcome to register their names with Andrea Colby, Chair of the JPC PTA, at [colby.clan@xtra.co.nz](mailto:colby.clan@xtra.co.nz) to register your interest to join our Helpers List Being a member of the PTA doesn't require you to attend the meetings, although you are most welcome to, but being on the email list we can make contact for those times when we may require a plate for a JPC function, or sponsorship for fundraising.

*Again this year, we are offering paid advertising in the weekly newsletter which is emailed to over 800 local families. Space is available at \$5 per business card size, per issue; please make contact with [sue.rowles@jpc.school.nz](mailto:sue.rowles@jpc.school.nz) in the first instance, who will then make contact with the PTA Treasurer to issue and invoice. This is a very cost effective way to advertise your business/product and raise funds for the PTA.*

*Thank you in anticipation!*

**Andrea Colby - PTA Chair**

## ROTORUA HAN LEE TAEKWONDO

*What is Taekwondo?*

The fundamentals of Taekwondo are learned through a series of patterns of combined moves, free sparring and self-defence techniques. The objective of training is to seek the enhancement of personal character by strengthening both mind and body

### Training Classes

Rotorua Primary School Hall: Two classes

	Monday	Tuesday	Wednesday	Thursday	Friday
The First Class	5pm - 6pm		5pm - 6pm		5pm - 6pm
The Second Class	6pm- 7pm		6pm- 7pm		

Lynmore Primary School Gym: One class

Monday	Tuesday	Wednesday	Thursday	Friday
	5pm - 6pm		5pm - 6pm	

*What do you learn from Taekwondo?*

**Discipline**   **Leadership**   **Confidence**   **Fitness and health**   **Respect**   **Flexibility**  
**Strength**   **Weight Gain & Loss**   **Learn to protect yourself**

**Contact: Jason Lee on 021 158 4221 OR 349 2888**



## FROM THE SPORTS DESK



### NZL U15 (Cadet) Girls' Water Polo Teams Announced

Aimee Cogger (*left*) has been selected for the New Zealand U15 (Cadet) Girls' Water Polo Team, competing at the 2014 Hawaiian Invitational Tournament – 4-10 August 2014, Honolulu.



### ROTORUA SECONDARY SCHOOLS VOLLEYBALL COMPETITION

Starts Tuesday March 4<sup>th</sup> for Years 9-13 at the RGHS Arena. To enter, students must provide a list of their team members and a parent/caregiver's name and phone number who will be there every week to supervise the team. Cost is \$30 per team.

Contact JPC Sports Coordinator – [Arthur.faulkner@ipc.school.nz](mailto:Arthur.faulkner@ipc.school.nz) to register or for more details

### NETBALL UMPIRING COURSE: MARCH NOT MAY

The 2<sup>nd</sup> Umpiring Class will be held on Saturday and Sunday 1<sup>st</sup>/2<sup>nd</sup> March. All players are expected to attend. This will run from 10am-3pm at the Rotorua Netball Courts. Each team requires 2 umpires; no umpires, no games. Mrs N Rogers [Natasha.rogers@ipc.school.nz](mailto:Natasha.rogers@ipc.school.nz)

### New Zealand Archery Competition

In January 2014 the New Zealand National Target Archery Competitions were held in Whitianga. Jordan Carter, in Year 11, gained the bronze medal for New Zealand in the "Intermediate Men's Compound Bow" division. He also won a silver medal in the teams match play finals at the New Zealand Nationals.

These recent achievements compliment his achievements at the 2013 Indoor Nationals Competition. In that competition, Jordan came second overall in the Intermediate Compound Bow division, winning the silver medal. In the Junior Mens Compound Individual Match-play, Jordan narrowly missed out on third place after he lost his 3rd/4th place match-play in a 1 arrow shoot off tie breaker.

Congratulations to Jordan for his outstanding achievements in Archery.

## FROM THE CAREERS DEPARTMENT

### PIHMS (Pacific International Hotel Management School)

Career Week at PIHMS Tuesday 29<sup>th</sup> April – Friday 2<sup>nd</sup> May 2014. Students attending will experience many aspects of hotel operations and will live and learn about hospitality in our simulated hotel and chat with current students on campus. Students will also meet professionals from the Tourism and Hospitality industry and enjoy a variety of fun activities.

This unique experience and week is supervised by qualified staff and industry professionals and is an excellent introduction for students considering doing an International Qualification in Hospitality Qualifications in Hospitality and Tourism Business Management.

For further information Contact PHIMS or call at the Careers Office.

Phone: 0800 100 331

Email: [marketing@pihms.ac.nz](mailto:marketing@pihms.ac.nz)

Web: [www.pihms.ac.nz](http://www.pihms.ac.nz)

### NZ School of Radio

TV Presenting Workshops – Covers all areas of presenting both on and off camera. You'll gain the skills and confidence needed to take that first step into a career as a TV Presenter.

On-Screen Acting Workshops – Cover all aspects of acting for Film, Television and TV Commercials. You'll learn the skills, build confidence and gain industry knowledge to kick start a career as an actor.

Weekend Workshops 24-25<sup>th</sup> May

Grey St Television Studios, Tauranga

Limited to 10 people, APPLY NOW!

For more details see the website: [www.radiocareer.net](http://www.radiocareer.net)

### Otago Tertiary

Information Day Monday 12<sup>th</sup> May 2014 – Find the answers to your questions

For further information phone 0800 80 8098 or email [Claire.cook@otago.ac.nz](mailto:Claire.cook@otago.ac.nz)

More information is available from [Sheryl.hewitson@ipc.school.nz](mailto:Sheryl.hewitson@ipc.school.nz) OR [jan.thompson@ipc.school.nz](mailto:jan.thompson@ipc.school.nz)

The **BOP TENNIS CHAMPIONSHIPS** were held on Friday 21<sup>st</sup> Feb at Papamoa Tennis Club. Our student's results were:

Nikolaus Konlechner: 3<sup>rd</sup> in Singles (Div 2), Stefan Milosevic: 1<sup>st</sup> in singles (Div 3)  
 James Pemberton and Mark Robilliard: won a medal for 2<sup>nd</sup> place in the Doubles (Div. 2)  
 Hingaia Hahipene and Olivia Philip: 5<sup>th</sup> in Doubles (Div 2)

**Mrs S. Brewer - TIC Tennis**

## JPC YR 9-13 ATHLETICS TUESDAY 25<sup>TH</sup> FEBRUARY

The annual Yr 9-13 Athletics will be held Tuesday 25<sup>th</sup> February. The students from Yr 9-11 qualified through their PE classes and Yr 12/13 participants registered through Mr Faulkner, the Sports Co-ordinator.

The list of Yr 9-11 participants will be posted today, Monday 24<sup>th</sup> and the Yr12/13 were posted on Friday. The qualifiers are displayed in the ERC Centre foyer.

Yr 9-11 students must wear their PE uniform and Yr 12/13 students in shorts and preferably a T shirt of their house colour.

Parents/caregivers are most welcome to come on Tuesday.

- **Only students** who have qualified and listed on sheets on Student Reception Windows are out of class on Tuesday 25<sup>th</sup> February
- Track events are run first, before field events start

Time	High Jump	Long Jump	Shot Put	Discus	Javelin	Track
9.15am	Senior Girls Intermediate Girls	Intermediate Boys	Pit 1 Junior Boys	Pit 1 Junior Girls	Senior Boys	200m Senior Intermediate Junior Girls & Boys
10.00am	Senior Boys	Pit 1 Junior Boys Pit 2 Junior Girls	Pit 1 Senior Girls	Pit 1 Intermediate Girls	Intermediate Boys	10.30am 100m Heats
11.15am	Intermediate Boys	Pit 1 Senior Girls	Pit 1 Intermediate Girls	Pit 2 Senior Boys	Junior Boys	
12Noon						300m/400m Senior Intermediate Junior Girls & Boys
12.15pm	Junior Girls	Pit 1 Intermediate Girls	Pit 1 Senior Boys Pit 2 Junior Girls	Pit 1 Intermediate Boys Pit 1 Junior Boys	Junior Girls Senior Girls	1.15pm 200m Finals
2.00pm	Junior Boys	Pit 1 Senior Boys	Pit 1 Intermediate Boys	Pit 1 Senior Girls	Intermediate Girls	
2.45pm						100m Senior Intermediate Junior Girls & Boys  Year 13 House Relay

**ADVERTISE YOUR BUSINESS ON THIS PAGE FOR \$5 PER SPACE PER INSERTION & REACH  
800 EMAIL ADDRESSES ON OUR DATABASE**

**Contact [sue.rowles@jpc.school.nz](mailto:sue.rowles@jpc.school.nz) in the first instance,  
then an invoice will be issued by the JPC PTA.**

**PLUGZ 4 LUGZ**

**Grade 5 custom made hearing protection**

**MADE ON THE SPOT**

**Comfortable\* Reusable\* Reliable\* Waterproof**

*Work, Play, Sleep and Swim*

In your very own Grade 5 earplugs

**Grant Rowles, Rotorua**

(07) 348 0908 / or 027 275 6848

[www.earmold.com.au](http://www.earmold.com.au) for more info

***"Hear today, gone tomorrow without  
adequate hearing protection"***

