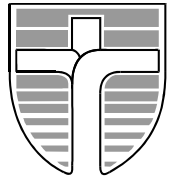




# John Paul College, Rotorua

Whitworth Road, Rotorua. [www.jpc.co.nz](http://www.jpc.co.nz) Ph: 07 3478 795 Fx: 07 3461 271  
A WEEKLY NEWSLETTER FOR THE JOHN PAUL COLLEGE COMMUNITY  
Term 1, Issue 9 23<sup>rd</sup> March 2015



*Ma te pono Me te aroha – Through Faith and Love*  
2015 School Theme : 'Per Ardua Ad Astra – Through Adversity To The Stars'

Dear Parents/ Caregivers

Kia Ora, Malo e Lelei, Talofa, Greetings.

## WINTER SPORTS CODES – VOTE OF THANKS!

I extend a vote of thanks to all parents who have volunteered their time and expertise to support winter codes. We appreciate the professional and personal sacrifice you make to allow our students to excel on the sports field.

We are still in urgent need of parents to help with rugby, soccer, basketball and netball. If you would like to assist please contact our Sports Director, Arthur Faulkner, on [Arthur.faulkner@jpc.school.nz](mailto:Arthur.faulkner@jpc.school.nz)

## PARENT – TEACHER INTERVIEWS: THIS WEEK ON TUESDAY 24<sup>TH</sup> & THURSDAY 26<sup>TH</sup> MARCH

**Please note** that school will be finishing at 2.50pm on these days.

Please bring your child to the interview so that parents, student and teachers are all on the 'same page' with respect to progress and what is yet to be achieved.

## SENIOR STUDENT AIMING HIGH

It is important for you to note that tertiary providers are increasingly lifting the bar in relation to accessing courses and awarding scholarships. The emphasis is not the number of credits achieved but the quality of them. On the basis teachers, Faculty Heads and Deans are encouraging students not only to achieve NCEA but where possible, to 'excellence' and 'endorsement' level. Please support the school in raising expectations.

## BEAUTY AND THE BEAST SPONSORSHIP COCKTAIL EVENING:

The College relies on funding to support our productions, without the generous donations received, we could not put on a production of this calibre. More details regarding the day will be in next week's newsletter.

If you would like to attend the evening and/or make a donation please contact Liz Lock on 3478795 extn 8839 or [liz.lock@jpc.school.nz](mailto:liz.lock@jpc.school.nz) who will give you more details of amounts you may wish to give and the benefits to you. These include advertising in the programmes, our weekly newsletter which goes out to over 900 families and others in the school community, space on our electronic noticeboard and other benefits depending on level of sponsorship.

This is a great way to support the College, advertise your business and get a preview of the production.

## REMINDER

Parents are reminded not to remain parked within the school grounds after 5pm, particularly those who are waiting for their children to finish sports practice.

**For security reasons, the gates ARE LOCKED at 5:00pm sharp.**

God bless

Patrick Walsh

Principal

**The Uniform Shop will be open from 8a.m until 5pm on Tuesday 24<sup>th</sup>**

**PTA 2<sup>nd</sup> HAND UNIFORM SALE** during parent/teacher interviews –

**3.30 – 5.00pm, at McKillop Campus.**

*Any donations of 2<sup>nd</sup> hand uniforms will be gratefully received.*

**Photo Catch Up Day is on Wednesday 1 April.**

**All sibling photos that have already been taken must be paid for by 1 April.**

## CALENDAR OF EVENTS TERM 1 **changes highlighted**

### March

- 23-29 MAADI Rowing (ST)  
23 NZSS Ultimate Frisbee (CW) – Taupo  
24 Parent/Teacher Interviews – 3.30-6pm  
Signum Fidei Mtg –Whare – 4-6pm  
26 French Trip Departs (CH)  
NZSS U15/U19 Rugby 7s Tauranga  
Yr 12 Parish Mass – St Michaels  
Parent/Teacher Interviews – 3.30-6pm  
26-28 Yr 13 SSC Camp (NB)  
28 NZSS Track & Field – Auckland  
Shakespeare Festival (TG) – RLHS  
30 Yr 11 Road Safety Expo (WM)

### April

- 1 China Trip (WM)  
2 Holy Thursday Liturgy  
**DAYLIGHT SAVING: 5<sup>th</sup> April**  
**OPEN NIGHT: Thursday 18<sup>th</sup> JUNE**  
**SCHOOL BALL: Saturday 4<sup>th</sup> JULY**

## PLEASE START RETURNING TROPHIES NOW

We would appreciate  
all trophies back by the  
end of Term 1 please.



### YEAR 7 IMMUNISATION

All Year 7s have had their information session and given their immunisation forms to take home to be completed by parents; **PLEASE RETURN BY THIS FRIDAY 27<sup>th</sup> March.**

Thank you

**Mrs Cathy Flavell**

JPC School Nurse

### PTA RAFFLE

Tickets are \$2 each

The prizes are:

1<sup>st</sup> prize \$200

2<sup>nd</sup> prize \$100,

3<sup>rd</sup>, 4<sup>th</sup>, 5<sup>th</sup>, 6<sup>th</sup> prize all \$50



**Thank you for your support as the funds will go towards purchasing another drinking station, which has been requested by the students.**

## FUNDRAISER

### “BE WARM THIS WINTER” FIREWOOD FOR SALE



Fundraising for JPC Girls First X1 hockey team.  
Delivered within Rotorua city limits & tipped off  
**Dry Box wood \$180 for 9 cubic metres**

For orders please email:

[permapine@permapine.co.nz](mailto:permapine@permapine.co.nz)

Please provide the following details:

- Contact name
- Contact phone numbers
- Address
- Any specific directions for delivery i.e where to drop on your property, specific day/time

### FULLFILL FRIDAY'S IN LENT

Our JPC community has made a commitment to raise funds for the FullFill Van Project in 2015. Each Friday during Lent there has been a collection during morning form time, with all money collected, going directly to the FullFill Van.

Week 1: \$211.20

Week 2: \$165.50

Week 3: \$205.60

Week 4: \$116.40

Week 5: \$214.50

**TOTAL = \$913.20**

Thank you so much for your generosity so far. This week is the final week, so hopefully we can reach a grand total of \$1,200 which will keep the Full Fill Van operating for a month.

**Year 12 and 13 Faith In Action students**, will be selling Plum Jam and Honey at the Parent evening on 24 and 26 March. All proceeds from the sale of the Jam and Honey will be donated to the committee managing the Full Fill Van.

Special thanks to Mr Owen Kowalewski who donated the Plums, Mr Mat Syngé who donated the Honey and Mr Brendan Davis - Food and Nutrition Teacher for his time and expertise.

**FullFill Plum Jam - \$3.00**  
**FullFill Honey - \$4.00**



**Kelly, Savannah & Kasey Seekup would like to acknowledge the huge love and support from the JPC community and friends in this time of their loss.**

**“Thank you”**

### **ORDERING 2015 SCHOOL PHOTOS**

This year John Paul College school photographs will be available to view and order OnLine with PhotoLife Studios. Each child was photographed separately on **Friday, the 20<sup>th</sup> March**

Your son or daughter will bring home an **OnLine slip with their unique Shoot Key** detailed on it. This Shoot Key will display all the photographs of your child. It is then an easy process for you to shop on-line and purchase the photographs you want. If you do not want to order online, envelopes will be available at the Student Counter after the photo shoot day.

If you want a sibling photo taken, prepaid envelopes will be available from the Student Counter **before** the photo shoot day. These must be presented before the sibling photo is taken.

If you place your order within three weeks of receiving your Shoot Key you will receive free delivery for your photo orders. PhotoLife has agreed to dispatch all the orders back to the school and your child will bring their photographs home.

Any orders placed after this three week period will be sent directly to your specified delivery address and will incur a \$6.00 Postage & Packing charge. You will see this message when you go Online to view and order your photographs.



## **SETFREE 2015**

*“Dear young people, listen within: Christ is knocking at the door of your heart.”*

**Years 9 – 13                      10<sup>th</sup> – 12<sup>th</sup> April**

**(Middle weekend of the school holidays)**

**At Totara Springs Christian Camp, Matamata**

SetFree National Catholic Youth Festival is a prime opportunity to encounter Christ through excellent music and youth culture. Filled with phenomenal speakers, sacrament, prayer, music, and video, in an atmosphere that is engaging and exciting, do not let this event pass you by!

JPC will provide a bus for Rotorua people and others who may need transport.

**Cost : \$140:00 if registered by March 26th**

**Information and registrations; look at website [setfree.org.nz](http://setfree.org.nz)**

Notify Mr Kowalewski names of those students needing the bus.

On Thursday 19<sup>th</sup> the **JPC CLAYTARGET SQUAD** attended the Auckland Metropolitan claytarget shoot for the first of the 2015 Auckland/Waikato/BOP Regional Secondary School shoots.

The squad achieved 2<sup>nd</sup>, shooting 283/300 for the Point Score (Bayley Austin 60, Dylan Austin 59, Cameron Slade 59, Liam Shorland 56, Jake Stokman 49).

Bayley shot 1<sup>st</sup> Overall for the day and 2<sup>nd</sup> in the Single Barrel (10/10).

Dylan shot 2<sup>nd</sup> Overall for the day, 1<sup>st</sup> in the Single Rise (20/20) and 1<sup>st</sup> in the Single Barrel (10/10), (taking 1<sup>st</sup> place after the shootout). Jake, Cameron and Liam shot 9/10 each in the Single Barrel; Bayley 19, Liam 19, Jake 18 and Cameron 17 in the Single Rise.

Well done to Liam who shot his long run 25 badge.

**Congratulations and well done boys.**



Kia ora koutou,

Our next **WHANAU SUPPORT GROUP HUI is TONIGHT 5.30pm to 7.30pm in the whare.**

We will be reviewing the Maori achievement plan we started at the last hui and update you on waka ama, and taiaha.

We can also update you on the kapa haka trip to the Maori and Pasifika School festival in Auckland, 20<sup>th</sup> March and all the mahi the roopu has done to prepare for the National Principals Conference on the 22<sup>nd</sup>.

Please bring a plate to share kai after the hui, na Eugene.”

**KAPA HAKA PRACTICE** for the last 3 weeks of term and the Easter holidays.

Wednesdays Week A lunchtime and period 5  
 Week B period 4 and lunchtime AND 3.30-6.00 pm  
 Saturday 21<sup>st</sup> 1-6pm  
 Sunday 22<sup>nd</sup> Pohiri - meet at school at 2.30pm  
 Saturday 28<sup>th</sup> NO practice  
 Sunday 29<sup>th</sup> 12-6pm  
 Saturday/Sunday 4<sup>th</sup> /5<sup>th</sup> April - NO practice (Easter)

**Holidays**

First Week		Second Week	
Monday 6 <sup>th</sup>	NO practice (Easter Monday)	Monday 13 <sup>th</sup>	NO practice
Tuesday 7 <sup>th</sup>	10-6pm	Tuesday 14 <sup>th</sup>	10-6pm
Wednesday 8 <sup>th</sup>	10-6pm	Wednesday 15 <sup>th</sup>	10-6pm
Thursday 9 <sup>th</sup>	10-6pm	Thursday 16 <sup>th</sup>	10-6pm
Friday 10 <sup>th</sup>	NO practice	Friday 17 <sup>th</sup>	NO practice
Saturday 11 <sup>th</sup>	10-6pm	Saturday 18 <sup>th</sup>	10-6pm
Sunday 12 <sup>th</sup>	12-4pm BOYS ONLY	Sunday 19 <sup>th</sup>	12-4pm BOYS ONLY

Please bring a kai to share on long practice days. we also need whanau to help in the kitchen, particularly in the holidays. Let Nan know please if you can help

**TAIAHA** - for all boys in Kapa Haka - Thursdays 4-5pm (term time)

**2015 RUSSELL MCVEAGH WAIKATO REGIONAL DEBATING CHAMPIONSHIPS**

On Saturday, 21 March Secondary schools from throughout the Waikato and Bay of Plenty entered debating teams in this prestigious annual event hosted by the School of Law at the University of Waikato.

This year John Paul College entered two teams John Paul College 1 **Rebecca Colby, Arvin Pingol** and **Zoe Spence** and John Paul College 2 **Loren Skudder-Hill, Theresa McLean** and **Danielle Cooper**.

Both teams competed in three debates, both John Paul College teams winning their first prepared and losing their two impromptu debates. A tremendous amount of experience and learning was gained from the day with **Loren Skudder-Hill** being considered for the Waikato team.

Moots were – *“This house regrets the rise of online social media charity and activism campaigns”*  
*“This house would ban gambling”* and *“This house would reserve places for women in University courses in science, technology and engineering”*.

All looks good for the future of debating at John Paul College. A special thank you to Dr Alistair McLean and Mrs Andrea Colby who also supported the teams throughout the day.

Whilst highly competitive, we had a most enjoyable day debating the top teams in the Waikato and bay of Plenty.

Gabrielle Thurston - **HoD Drama and TIC Senior Debating**



## CARITAS CHALLENGE

It is only two days until the JPC Caritas Challenge. Students need to bring any outstanding sponsorship money to school, before Wednesday to take part in the Challenge. We are so impressed that 740 students are taking part in an all-day basketball relay, to show our solidarity with the Philippines and those affected by the recent natural disasters.

We will be ending the day with a Liturgy at 5.30 in the Edmund Rice Centre, followed by a light meal of Filipino food. You are warmly welcome to attend. (A small plate would be appreciated.)

Veronica Aislable - TIC Caritas

E [veronica.aislabie@jpc.school.nz](mailto:veronica.aislabie@jpc.school.nz)



## BEAUTY and THE BEAST – CAN YOU HELP!?!?!?

The production team requires ("*Maurice's invention*") an old trolley/pram which has a hand held part and possibility a lever, can have bells, whistles added to it.

Does anyone have anything in their shed that we could use?

We also need 2 large stuffed fish for props.

Sally Smyth 027 416 7398 or

Candy Visser E: [Candice.visser@jpc.school.nz](mailto:Candice.visser@jpc.school.nz)

## FOOTBALL COACHES NEEDED

This year, we have a huge number of students wanting to play football in the junior and senior leagues. However, a number of these teams do not have coaches/managers yet. Unless we can fill these positions some of the teams may not be able to go ahead.

The teams at present are:

12/13th Grade:

JPC Saints

JPC Spirit

JPC Hawks

JPC Harriers

JPC Falcons (coach Brendan Squibb)

JPC Kestrels (coach Vernon Douglas)

JPC Eagles (coach David Davies)

JPC Jets (coach Julian Hewitt)

JPC Heroes (coach Gary Benfell)

We also have enough students for a senior boys second XI, but unless we can find a coach, that team will not be able to go ahead.

If you are interested in coaching and looking after any of these teams, please contact me on the school number extension 8855 or e-mail me at [stephen.bloomfield@jpc.school.nz](mailto:stephen.bloomfield@jpc.school.nz)

## HOCKEY

Training times for this week are:

1<sup>st</sup> XI Boys – Monday 5.00 – 6.30pm at Smallbone Park

2<sup>nd</sup> XI Boys – Monday 3.30-4.30pm JPC Turf

1<sup>st</sup> XI Girls Wednesday 5.00.6.00pm Smallbone Park

3<sup>rd</sup> XI Girls Tuesday 3.30 – 5.00pm JPC Turf

NOTE that 3<sup>rd</sup> XI girls training has gone from Monday to Tuesday this week

Yr 7/8 training times to be confirmed

If you are unable to attend see Ms Northey..

Any queries, email Ms Northey. E: [barb.northey@jpc.school.nz](mailto:barb.northey@jpc.school.nz)





A woman, Veronica, wipes Jesus' face.



Jesus falls a second time.



Jesus meets women who are crying.



Jesus falls a third time.

**Sixth Station: Look at Jesus**

Jesus is hot, tired, and sweating. His hair is all tangled, and he is covered in dust from the long walk.

Suddenly, a woman pushes her way out of the crowd and stands in front of Jesus. She takes a clean cloth and gently wipes Jesus' face. Jesus is so thankful that he leaves a picture of his face on her cloth.

**Look at Your Heart**

Have you ever helped someone? Have you ever done something that helped someone feel better? Sometimes you may have done something that you thought was very small or unimportant: bringing a glass of water or juice to someone, or even giving someone a helping hand with a chore. Maybe you just smiled at someone who looked sad!

As you think of the times you helped, show Jesus your heart. As you picture Jesus loving you, maybe you can also picture Jesus leaving a picture of his face on your heart. What a wonderful heart you have!

**Seventh Station: Look at Jesus**

How very tired, weak, and sad Jesus is now. Even though he keeps trying to walk with the heavy cross, he just can't keep going.

The noise from the crowd and from the soldiers makes him feel even worse. Then Jesus falls, because he just can't take another step.

**Look at Your Heart**

Have you ever had a hard time with something? Maybe you can't do something the way you want, or you feel as if you keep messing up on something? How does your heart feel when that happens? Maybe your heart feels the way Jesus' heart felt when he fell this second time.

When you show Jesus how your heart felt, picture Jesus loving you. Jesus knows how your heart felt; his heart probably felt the same way.

**Eighth Station: Look at Jesus**

After Jesus gets up, he continues on the road carrying his heavy cross. He passes some women who are crying because they are so sad to see Jesus suffer.

But instead of thinking only of himself and how bad he feels, Jesus tells the women not to keep crying because of him. He tells them, instead, to take care of others, and especially to take care of their children.

**Look at Your Heart**

Sometimes it is easy to just think about ourselves -- about what is not going the way we want it, or about problems that we have. It is very hard, then, to think about other people. How does your heart look when you do that, when you think only about yourself?

Show your heart to Jesus, and picture Jesus loving you with your heart that way. When you are ready, can you ask Jesus to help you have a heart like his, a heart that thinks about other people and remembers other people? That's the kind of heart Jesus has.

**Ninth Station: Look at Jesus**

Jesus is so tired now that he can hardly take another step. It is hard for him to breathe. He has been walking a long time along the dusty road, and he has no energy left. He just can't go on anymore.

Then Jesus falls down in the street for the third time. He is so very tired. Jesus asks God to help him. And Jesus gets up again, even though it is hard for him to do.

**Look at Your Heart**

When we have really tried to do our best, and have not been able to succeed, it is easy to feel like Jesus did. Sometimes other people just keep yelling about something we do, or sometimes other people make fun of the way we do something.

Can you remember a time when you felt this tired in your heart, when you seemed to be having a sad or hard time with someone or something? Look at how your heart felt, and show your heart to Jesus. When you are ready, ask God to help you when you feel this way.

**Tenth Station: Look at Jesus**

Finally Jesus reaches the hill that is the end of the road he has to walk. Jesus knows that he will die here. But before he dies, the soldiers will do more to him.

They pull off his long robe, and almost all his clothes are taken from him.

Jesus stands in front of the crowd with only a small piece of cloth covering part of his body. Jesus asks God to help him remember that he is not alone, that God is with him through all this.

**Look at Your Heart**

Is it hard for you to share or to give away something that you like? Do you sometimes like to keep everything for yourself? Do you ever let something of yours be the reason for bad feelings or bad words between you and someone else?

If you remember a time when something like this happened, remember how your heart felt. Then, show your heart to Jesus. You can ask Jesus to help you to have a heart that is like his heart.



Jesus' clothes are taken away.

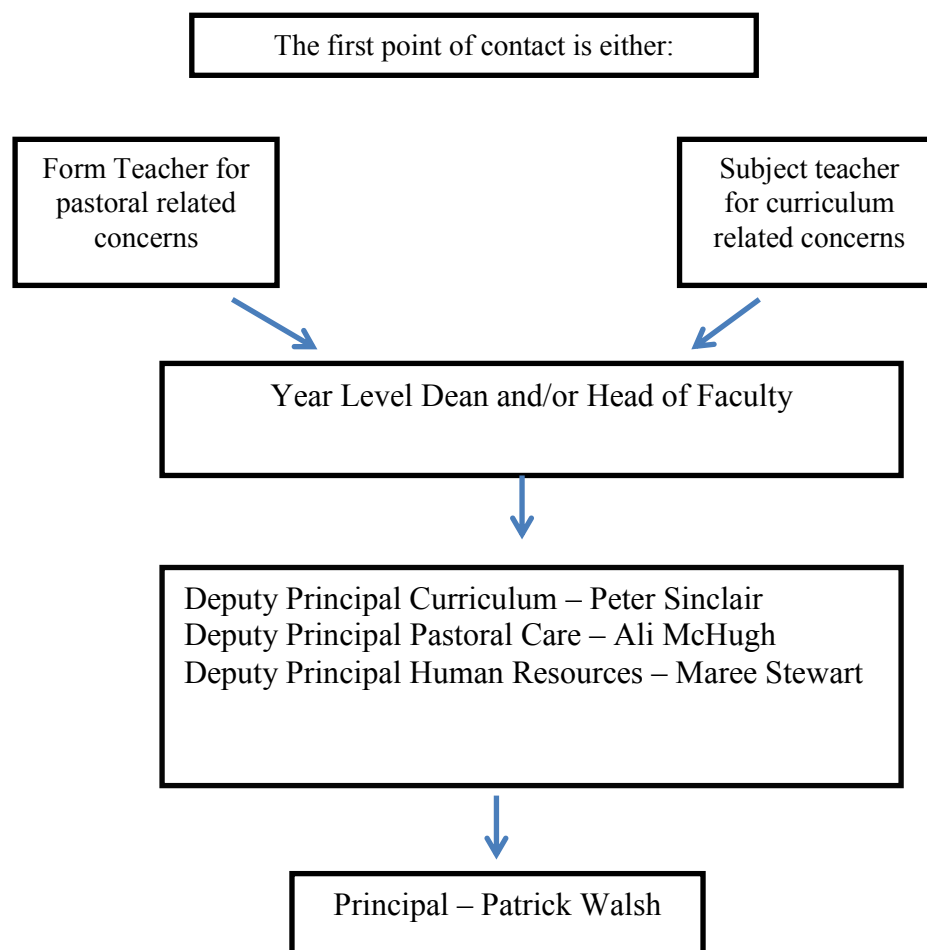
# STATIONS OF THE CROSS

*This week, Stations 6 to 10*



## Community Communication Process

If a parent wishes to communicate with teachers please refer to this flow diagram.



The preferred modes of communication are by email or by phone.

All staff email addresses are [first\\_name.surname@ipc.school.nz](mailto:first_name.surname@ipc.school.nz).

A phone list is available on the school website and also the last page of this newsletter.

John Paul College staff will reply to your communication when practicable.

If you have not received a reply within 2 working days please resend and copy it to the Dean or Head of Faculty.

If your communication is still unresolved please contact the appropriate Deputy Principal.

### FROM TODAY'S DAILY NOTICES

**PTA RAFFLES** Thank you to all who are making the effort to sell their books. Money/raffle book to be placed in a bag and into the slot at the Accounts Office.

**SET FREE FUN** – the Set Free team will be at JPC on Wednesday to inform students about the National Youth Conference

**NETBALL UMPIRE COACHING ASSESSORS WORKSHOP** Will be held on the 19<sup>th</sup> April, 10.00am-3.00pm at the Rotorua Netball pavilion. An excellent opportunity to up skill and become a qualified umpire.

**SCHOOL PHOTO CATCH UP DAY** – Wednesday 1<sup>st</sup> April. All sibling photos that have already been taken must be paid for by 1<sup>st</sup> April.

**HOUSE SPORT COMPETITION** – This week, playing Basketball, Wednesday at 1.30pm (weather dependent). Wear house colours and support your house. House points are given to the winning houses and also for house spirit.

Games are: McKenna vs Rice, LaSalle vs Kanea, McKillop has the Bye

**SVDP FOOD CUPBOARD COLLECTION** tomorrow. Thank you for your continued generosity. Mrs Cook

**SCHOOL PHOTO CATCH UP DAY**–Wednesday 1<sup>st</sup> April. Sibling photos already taken? Must be paid asap

**FROM THE CAREERS OFFICE  
MASSEY UNIVERSITY PRESENTATION**

**9am Tuesday 24th March and AUT Presentation at 2pm Tuesday 24th March**

\*\*\*\*\*

**ROTORUA INFORMATION EVENING : OVERSEAS EXCHANGE PROGRAMMES**

**Thursday 26<sup>th</sup> March at the Rotorua Public Library, 5.30-6.30pm**

Students who wish to improve their language skills and experience Europe, but do not want to interrupt their NZ schooling, can now take advantage of our unique European Summer Explorer Programme. We are looking for students who are curious and outgoing, academically motivated and who will be great ambassadors for NZ. New programmes, Early Bird Enrolments available now.

See Mrs Hewitson in the Careers Office for information and brochure or go to [www.youreducation.co.nz](http://www.youreducation.co.nz)

\*\*\*\*\*

**POCE – What is Pacific On Campus Experience?**

POCE is an opportunity for Year 13 students of Pacific Islands descent to find out about the University of Otago, Dunedin Campus.

You will experience attending Dunedin Tertiary Information Day to plan your degree, be inspired by university lectures staying at a residential college. Experience life on campus, to ensure a successful transition to tertiary studies. All expenses (travel, accommodation, programme activities and meals) will be paid for by the Pacific Islands Centre, University of Otago. **Application closing date:** Thursday 26<sup>th</sup> march 2015

For further information contact Christine Anesone on 0800 80 80 98 ext 4981, E:

[christine.anesone@otago.ac.nz](mailto:christine.anesone@otago.ac.nz) or check out the website

[www.otago.ac.nz/pacific/secondaryschool/otago022936](http://www.otago.ac.nz/pacific/secondaryschool/otago022936)

To apply for a scholarship

1. You need to complete the POCE 2015 application form available on the website
2. Write an essay of 750-1200 words on the topic "NCEA – my plan on how to achieve excellence at the end of the year"
3. Get a reference from the school principal
4. Complete POCE checklist
5. Post 1-4 to Christine Anesone, POCE Co-ordinator, Pacific Islands Centre, University of Otago, PO Box 56, Dunedin 9054

\*\*\*\*\*

**OCE – ON CAMPUS EXPERIENCE - AT THE UNIVERSITY OF OTAGO**

The on Campus experience is a fully funded, all expenses paid scholarship that provides an amazing opportunity for senior secondary students of Maori descent to sample living and learning at the University of Otago.

The students will get to explore the Otago Campus, and the student city of Dunedin. They get the opportunity to attend lectures in their interests, as well as meet academic staff and students. They also get to experience life in a residential college and get to meet staff at the Maori Centre, who provide great support for Maori students when attending Otago University.

**When: Monday 27<sup>th</sup> April - Thursday 30<sup>th</sup> April 2015**

Completed applications must be received at the University of Otago Auckland Centre by 5pm Friday 27<sup>th</sup> March 2015. Applications will be accepted via post, email or fax.

Address: University of Otago House, Level 4 385 Queen Street, Auckland 1141

Email: [auckland.liaison@otago.ac.nz](mailto:auckland.liaison@otago.ac.nz) Fax: Attn: Ashley Te Whare (09) 3739701

Applications can be downloaded from: [otago.ac.nz/prospectivestudents/maori/](http://otago.ac.nz/prospectivestudents/maori/)

\*\*\*\*\*

**Sheryl Hewitson – Careers Advisor**

**E: [Sheryl.hewitson@jpc.school.nz](mailto:Sheryl.hewitson@jpc.school.nz)**

**ROTORUA SOCCER ACADEMY / HOLIDAY PROGRAMME**

To be held at Malfroy Primary School on Wednesday 8<sup>th</sup>, Thursday 9<sup>th</sup> April

From 9.00am-3.00pm each day, wet or fine.

Learn to play football or just improve your skills and have a great time.

\$50 for both days, limited places available

Phone Ian 3628 411 or 021 108 1841 or Email [walkersrule@xtra.co.nz](mailto:walkersrule@xtra.co.nz)



## REACH 900+ EMAIL ADDRESSES ON OUR DATABASE

Contact [sue.rowles@jpc.school.nz](mailto:sue.rowles@jpc.school.nz) in the first instance, then an invoice will be issued by the JPC PTA.

### PLUGZ 4 LUGZ

**Grade 5 custom made hearing protection**

**MADE ON THE SPOT**

**Comfortable\* Reusable\* Reliable\* Waterproof**

*Work, Play, Sleep and Swim*

In your very own Grade 5 earplugs

**Grant Rowles, Rotorua**

(07) 348 0908 / or 027 275 6848

[www.earmold.com.au](http://www.earmold.com.au) for more info

**"Hear today, gone tomorrow without adequate hearing protection"**



### Rotorua East

**Growing Effective Thinkers and Learners**

Quality Early Childhood Education based on the Habits of Mind, Restorative Practice and the Incredible Years Programme

Call into **7 Alastair Avenue**

Phone 345 9689 or visit our webpage

[www.centralkids.org.nz](http://www.centralkids.org.nz)



### Rotorua Medical Group

Central Health and Fairy Springs Medical Centre

**"NEW PATIENTS WELCOME"**

**1 Practice + 2 Sites = Convenient Health Care 4 U**

Both sites open Mon-Fri, 8.00am to 5.00pm

Telephone: 347 0000 Email: [admin.rmg@rgpg.co.nz](mailto:admin.rmg@rgpg.co.nz)

[www.rotoruaemical.co.nz](http://www.rotoruaemical.co.nz)



**General Medical Services**  
Immunisations  
Medical Examinations  
Long Term Condition Management

Our comprehensive and excellent family health care services include a

**Drop In Clinic – no appointment necessary**

**Central Health**, 1181 Amohia Street (next door to Central Pharmacy)

*Mon to Fri between 9.00am and 11.00am and 2.00pm and 4.00pm*

**Fairy Springs Medical Centre**, 10-100 Fairy Springs Road, Rotorua

*Mon to Fri between 9.00am and 11.00am*

### TUTORING AFTER SCHOOL

Years 1 to 13

**Kip McGrath**  
EDUCATION CENTRES

- Maths
- English
- Reading
- Sciences

Our tutors are qualified, experienced teachers

Call Kip today on (07) 3492070

Email: [rotorua@kipmcgrath.co.nz](mailto:rotorua@kipmcgrath.co.nz)

### GUITAR & BASS LESSONS

Competitive prices!!

Always wanted to learn?  
I will have you playing your favourite song in no time!

CONTACT KATE REDFERN

021 123 5472

[klredfern1@me.com](mailto:klredfern1@me.com)



**Catriona Gordon**

BA/LLB. DIRECTOR

SPECIALISING IN PROPERTY, COMMERCIAL AND TRUST LAW

PHONE: 07 343 1224 | EMAIL: [catriona@lavalaw.co.nz](mailto:catriona@lavalaw.co.nz)

Level 1, 1144 Pukaki Street, Rotorua | PO Box 1233, Rotorua 3040

### NO ACC SURCHARGE ON XRAYS

- CT
- MRI
- Screening and Vascular Ultrasound
- General Musculoskeletal
- Intervention Procedures and Echocardiography
- All Maternity Ultrasounds
- Ultrasound Guided Biopsies
- Ultrasounds
- (Immigration CXRs)

We are also pleased to be the first to offer 4D scanning in the Rotorua area.

**Bringing patient care and imaging technology together**

X-rays – No appointment necessary.

For all other services call us to make an appointment.

**Central Health 1181, Crnr Amohia & Haupapa Streets Ph 07 343 7468**

[www.mokoiaradiology.co.nz](http://www.mokoiaradiology.co.nz)

**Mokoia Radiology**

**ACC/Private and Insurance Funded**

**PLEASE SUPPORT OUR ADVERTISING SPONSORS**



**Speedy Signs**  
grow your business faster  
www.speedysigns.co.nz

**Your Complete Branding Solutions Partner**

1198 Arawa Street Ph: 349 1000 E: rotorua@speedysigns.co.nz



www.embroidme.co.nz

**Kids growing up too fast?**

Are you a Business Owner that spends too much time working in your business instead of at home enjoying your family?

The good news is it doesn't have to be this way!

Call now for a **FREE** information pack that will change your business and life.

**ActionCOACH**  
business coaching

Call Narisa on (027) 4 ACTION  
Or email narisamorrissey@actioncoach.com



**ADVERTISE YOUR BUSINESS HERE  
MAKE THE MOST OF THE NEXT 30 NEWSLETTERS**

**\$10 PER WEEK THIS SPACE OR  
\$5 FOR HALF**

**AISLABIE FIREWOOD  
BE WARM THIS WINTER**

GET YOUR DRY  
FIREWOOD IN THE SHED  
NOW &  
BE PREPARED FOR  
THAT FIRST COLD SNAP  
RING BRIAN ON  
**027 274 1159**  
**3322 770**



**Breathe...new...life  
Into your writing**



BMS helps equip writers with the confidence to complete stories and books – family histories a speciality.

Contact: MS at BMS Ltd  
ms@bms.co.nz or (07) 349 4107

**LEARN TAOIST TAI CHI  
IN A WEEKEND**

**April 10 (5.30-8pm)**

**April 11 (9am-3pm)**

**April 12 (9am-3pm)**

**Exercise your whole body**

**Challenge your mind**



**\$145**

includes teas, lunches, t-shirt, 4 months membership

Registration essential [rotorua@taoist.org](mailto:rotorua@taoist.org)

**Need a Holiday?**

Holidays restore what everyday life steals from you...it's true!

Harvey World Travel Rotorua  
1235 Tutanekai St, 07 349 4130  
Rotorua@harveyworld.co.nz



**HARVEY WORLD TRAVEL**  
THE TRAVEL PROFESSIONALS

# CHANGEOVER TO WINTER UNIFORM WILL COMMENCE FIRST WEEK OF TERM 2 AND MUST BE COMPLETED BY THE 30<sup>th</sup> APRIL (2<sup>nd</sup> week Term 2)

## JOHN PAUL COLLEGE BOY'S WINTER UNIFORM

Students **MUST** only wear the uniform as supplied by the College Uniform Shop.  
The JPC logo is not available for embroidery from any local outlets.

**\*Prices are subject to change**

**The Uniform Shop is located through the side entrance of the Administration building.**

**Open hours: Monday to Wednesday– 8.00a.m to 4.00p.m**

**CLOSED FOR LUNCH: 11.30am-12.30pm**

**The Uniform Shop will be open from 8a.m until 5pm on Tuesday 24<sup>th</sup> Parent/teacher evening**

Contact: Mrs Carolyn Constable 3478 795 extn 8856 E: [Carolyn.constable@jpc.school.nz](mailto:Carolyn.constable@jpc.school.nz)

### Years 11-13 BOYS WINTER UNIFORM

ITEM	DESCRIPTION	SIZE	PRICE
			<i>Per item</i>
<b>Trousers</b>	Black, tailored trousers <i>COMPULSORY ITEM</i>	67-107	\$50.00*
<b>Shirt</b>	White long sleeved business shirt <i>COMPULSORY ITEM</i>	S-3XL	\$34.00*
<b>Tie</b>	Red and Black diagonal stripe with College monogram <i>COMPULSORY ITEM</i>		\$33.50*
<b>Jersey (wool)</b>	Highland Red, V neck with a Monogram <i>COMPULSORY ITEM</i>	XXS-3XL	\$95.00*
<b>Polar fleece jacket</b>	Black/Red with College monogrammed <i>OPTIONAL ITEM</i>	10-2XL	\$65.00*
<b>Jacket</b>	Shower & windproof with College monogram, soft-shell, new style <i>OPTIONAL ITEM</i>	10-2XL	\$89.00*
<b>Socks</b>	Black socks	S-M-L-XL	\$9.00*
<b>Scarf</b>	Double layer, knit scarf with College monogram <i>OPTIONAL ITEM</i>		\$31.00*

### Years 7-10 BOYS WINTER UNIFORM

ITEM	DESCRIPTION	SIZE	PRICE
			<i>Per item</i>
<b>Shorts</b>	Grey, Wool/Polyester <i>COMPULSORY ITEM</i>	8-16	\$40.00*
		80-104	\$44.00*
<b>Shirt</b>	Grey, long-sleeved, polo shirt <i>COMPULSORY ITEM</i>	10-16	\$30.00*
<b>Shirt</b>	Grey, long-sleeved, polo shirt <i>COMPULSORY ITEM</i>	S-2XL	\$34.00*
<b>Jersey (wool)</b>	Highland Red, V neck with a monogram <i>COMPULSORY ITEM</i>	XXS-3XL	\$95.00*
<b>Socks</b>	Knee length, grey socks/ double red band <i>COMPULSORY COLOURS</i>	S-M-L-XL	\$9.00*
<b>Trousers</b>	Grey, Wool/Polyester tailored <i>OPTIONAL ITEM</i>	10-104	\$54.00*
<b>Jacket</b>	Shower & windproof with College monogram, soft-shell, new style <i>OPTIONAL ITEM</i>	10-2XL	\$89.00*
<b>Scarf</b>	Double layer, knit scarf with College monogram <i>OPTIONAL ITEM</i>		\$31.00*
<b>Polar fleece jacket</b>	Black/Red with College monogrammed <i>OPTIONAL ITEM</i>	10-2XL	\$65.00*

### PHYSICAL EDUCATION UNIFORM

<b>PE Shorts</b>	Canterbury – black	10-3XL	\$29.00
<b>PE Shirt</b>	100% polyester - monogrammed	12, 14, S,M,L,XL	\$33.00
<b>Sports Socks</b>	Black Red top <i>OPTIONAL ITEM (sport related)</i>	S-M-L	\$11.00*



## JOHN PAUL COLLEGE GIRL'S WINTER UNIFORM

Students MUST only wear the uniform as supplied by the College Uniform Shop.  
The JPC logo is not available for embroidery from any local outlets.

**\*Prices are subject to change**

**The Uniform Shop is located through the side entrance of the Administration building.**

**Open hours: Monday to Wednesday – 8.00am to 4.00pm**

**CLOSED FOR LUNCH: 11.30am – 12.30pm**

**The Uniform Shop will be open from 8a.m until 5pm on Tuesday 24<sup>th</sup>**

**Parent/teacher evening**

Contact: Mrs Carolyn Constable 3478 795 / 8856 E: [Carolyn.constable@jpc.school.nz](mailto:Carolyn.constable@jpc.school.nz)

### Years 11-13 GIRLS WINTER UNIFORM

ITEM	DESCRIPTION	SIZE	PRICE
			Per item
<b>Skirt</b>	Long, black, two pleat, school <i>COMPULSORY ITEM</i>	6 - 22	\$72.00*
<b>Shirt</b>	White, long sleeved, tailored, button to neck <i>COMPULSORY ITEM</i>	10 - 20	\$34.00*
<b>Jersey (wool)</b>	Wool, Highland Red, V neck, JPC monogram <i>COMPULSORY ITEM</i>	XXS – 3XL	\$95.00*
<b>Tie</b>	Red and Black diagonal stripe with College monogram <i>COMPULSORY ITEM</i>		\$33.50*
<b>Socks</b>	Under the knee black per pair <i>COMPULSORY COLOUR</i> <b>NB: black stockings/tights optional alternative</b>	S-M-L (single) S-M-L (3 pack)	\$9.00* \$25.00*
<b>Jacket</b>	Shower & windproof with College monogram, soft-shell, new style <i>OPTIONAL ITEM</i>	10-2XL	\$89.00*
<b>Trousers</b>	Long, black, school trousers <i>OPTIONAL</i>	6 - 20	\$62.00*
<b>Scarf</b>	Double layer, knit scarf with College monogram <i>OPTIONAL ITEM</i>		\$31.00*
<b>Polar fleece jacket</b>	Black/Red with College monogrammed <i>OPTIONAL ITEM</i>	10-2XL	\$65.00*

### Years 7-10 GIRLS WINTER UNIFORM

ITEM	DESCRIPTION	SIZE	PRICE
			Per item
<b>Skirt</b>	Long, plaid, two pleat	6-24	\$80.00*
<b>NB: Girls can wear either long skirt or black trousers</b>			
<b>Trousers</b>	Long, black, school trousers <i>OPTIONAL ITEM</i>	6-20	\$62.00*
<b>Shirt</b>	White, long sleeved <i>COMPULSORY ITEM</i>	6-14 16-20	\$28.00* \$30.00*
<b>Jersey (wool)</b>	Wool, Highland Red, V neck, JPC monogram <i>COMPULSORY ITEM</i>	XXS – 3XL	\$95.00*
<b>Jacket</b>	Shower & windproof with College monogram, soft-shell, new style <i>OPTIONAL ITEM</i>	10-2XL	\$89.00*
<b>Scarf</b>	Double layer, knit scarf with College monogram <i>OPTIONAL ITEM</i>		\$31.00*
<b>Socks</b>	Under the knee <b>black</b> <i>COMPULSORY COLOUR</i>	S-M-L (single) S-M-L (3 pack)	\$9.00* \$25.00*
<b>Polar fleece jacket</b>	Black/Red with College monogrammed <i>OPTIONAL ITEM</i>	10-2XL	\$65.00*

### PHYSICAL EDUCATION UNIFORM

<b>PE Shorts</b>	Canterbury – black	10-3XL	\$29.00
<b>PE Shirt</b>	100% polyester - monogrammed	12, 14, S,M,L,XL	\$33.00
<b>Sports Socks</b>	Black Red top <i>OPTIONAL ITEM (sport related)</i>	S-M-L	\$11.00*



## **YEAR 12 PARISH MASS**

This Thursday 26 March, 9.00am at St Michael's Church Lake Road.

Students will be required to make their own way to St Michael's Church by 8.35am ready for a roll check by their Form Teacher.

There will be a bus at JPC to transport those students from buses students to St Michael's Church as necessary. There will be buses transporting the Year 12 students back to school

Year Level Parish Masses are designed to foster closer links between the school and the Parish community, which are important as we acknowledge that as a Catholic School we do not work in isolation in our role of supporting students in their faith journey.

*Thank you for your ongoing support of the Catholic Character at JPC as your support of the Catholic Character does make a difference.*

*Mrs B Fredricksen – Campus Minister*

E: [bernadette.fredricksen@jpc.school.nz](mailto:bernadette.fredricksen@jpc.school.nz)

# **J.P.C PRESENTS.....**



**When:  
8th-16th  
May**

**Where:  
Sir Howard  
Morrison  
Performing Arts  
Centre**

**Book at  
Ticket  
Master**

## STAFF EXTENSION AND EMAIL ADDRESSES

NAME		Code	Extn	Email
AISLABIE	Veronica	AV	8140	<a href="mailto:Veronica.aislabie@jpc.school.nz">Veronica.aislabie@jpc.school.nz</a>
ARNOTT	Beryl—Student Count / Absentees		8828	<a href="mailto:Beryl.arnott@jpc.school.nz">Beryl.arnott@jpc.school.nz</a>
BAKER	Simon	BS	8812	<a href="mailto:Simon.baker@jpc.school.nz">Simon.baker@jpc.school.nz</a>
BELL	Tim	BT	8120	<a href="mailto:Tim.bell@jpc.school.nz">Tim.bell@jpc.school.nz</a>
BILLING	Paul	BP	8101	<a href="mailto:Paul.billing@jpc.school.nz">Paul.billing@jpc.school.nz</a>
BITE	Marisol	MB	8121	<a href="mailto:Marisol.bite@jpc.school.nz">Marisol.bite@jpc.school.nz</a>
BLOOMFIELD	Karen	BF	8844	<a href="mailto:Karen.bloomfield@jpc.school.nz">Karen.bloomfield@jpc.school.nz</a>
BLOOMFIELD	Stephen	BD	8805	<a href="mailto:Stephen.bloomfield@jpc.school.nz">Stephen.bloomfield@jpc.school.nz</a>
BOTHA	Carien	BC	8116	<a href="mailto:Carien.botha@jpc.school.nz">Carien.botha@jpc.school.nz</a>
BOTHA	Martin	BM	8177	<a href="mailto:Martin.botha@jpc.school.nz">Martin.botha@jpc.school.nz</a>
BOYCE	Julie - Fees		8859	<a href="mailto:schoolfees@jpc.school.nz">schoolfees@jpc.school.nz</a>
BREWER	Sherry	BE	8852	<a href="mailto:Sherry.brewer@jpc.school.nz">Sherry.brewer@jpc.school.nz</a>
CARTER	Neil		8808	<a href="mailto:Neil.carter@jpc.school.nz">Neil.carter@jpc.school.nz</a>
CASEY	Pat - Gateway		8815	<a href="mailto:Pat.casey@jpc.school.nz">Pat.casey@jpc.school.nz</a>
CHAPMAN	Mark	CP	8858	<a href="mailto:Mark.chapman@jpc.school.nz">Mark.chapman@jpc.school.nz</a>
CLAPPERTON	Talita	CT	8117	<a href="mailto:Talita.clapperton@jpc.school.nz">Talita.clapperton@jpc.school.nz</a>
CONSTABLE	Carolyn Uniform Shop Manager		8856	<a href="mailto:Carolyn.constable@jpc.school.nz">Carolyn.constable@jpc.school.nz</a>
COOK	Alastair	CA	8109	<a href="mailto:Alastair.cook@jpc.school.nz">Alastair.cook@jpc.school.nz</a>
COOK	Gillian	CG	8104	<a href="mailto:Gillian.cook@jpc.school.nz">Gillian.cook@jpc.school.nz</a>
COONEY	Val	CV	8172	<a href="mailto:Val.cooney@jpc.school.nz">Val.cooney@jpc.school.nz</a>
CORDONNI	Lara	CL	8814	<a href="mailto:Lara.cordonni@jpc.school.nz">Lara.cordonni@jpc.school.nz</a>
CZYREK	Matt	CM	8824	<a href="mailto:Matt.czyrek@jpc.school.nz">Matt.czyrek@jpc.school.nz</a>
DAVIS	Brendon	DB	8171	<a href="mailto:Brendon.davis@jpc.school.nz">Brendon.davis@jpc.school.nz</a>
DOBSON	Lorraine	DL	8106	<a href="mailto:Lorraine.dobson@jpc.school.nz">Lorraine.dobson@jpc.school.nz</a>
DOUGLAS	Kelly	DK	8123	<a href="mailto:Kelly.douglas@jpc.school.nz">Kelly.douglas@jpc.school.nz</a>
DWIGHT	Mike	DM	8855	<a href="mailto:johnpaulcollege.international@gmail.com">johnpaulcollege.international@gmail.com</a>
ERASMUS	Natalie-Successmaker		8862	<a href="mailto:Natalie.erasmus@jpc.school.nz">Natalie.erasmus@jpc.school.nz</a>
EWEN	Andrea	EA	8114	<a href="mailto:Andrea.ewen@jpc.school.nz">Andrea.ewen@jpc.school.nz</a>
FAULKNER	Arthur – Sports Coordinator		8801	<a href="mailto:Arthur.faulkner@jpc.school.nz">Arthur.faulkner@jpc.school.nz</a>
FLAVELL	Cathy – Nurse		8806	<a href="mailto:nurse@jpc.school.nz">nurse@jpc.school.nz</a>
FREDRICKSEN	Bernadette	FB	8867	<a href="mailto:Bernadette.fredricksen@jpc.school.nz">Bernadette.fredricksen@jpc.school.nz</a>
GRAHAM	Colleen	GC	8131	<a href="mailto:Colleen.graham@jpc.school.nz">Colleen.graham@jpc.school.nz</a>
GRAHAMSLAW	Jan	GJ	8803	<a href="mailto:Jan.grahamslaw@jpc.school.nz">Jan.grahamslaw@jpc.school.nz</a>
HEPI	Marie	HM	8849	<a href="mailto:Marie.hepi@jpc.school.nz">Marie.hepi@jpc.school.nz</a>
HESKETH	Jacqui Homestay Coordinator		8863	<a href="mailto:Jacqui.hesketh@jpc.school.nz">Jacqui.hesketh@jpc.school.nz</a>
HEWITSON	Sheryl	HS	8823	<a href="mailto:Sheryl.hewitson@jpc.school.nz">Sheryl.hewitson@jpc.school.nz</a>
HILL	Rod	HR	8135	<a href="mailto:Rod.hill@jpc.school.nz">Rod.hill@jpc.school.nz</a>
HOUNSELL	Tim	TH	8143	<a href="mailto:Tim.hounsell@jpc.school.nz">Tim.hounsell@jpc.school.nz</a>
HUGHES	Terry	HT	8861	<a href="mailto:Terry.hughes@jpc.school.nz">Terry.hughes@jpc.school.nz</a>
JACK	Rebecca	JR	8136	<a href="mailto:Rebecca.jack@jpc.school.nz">Rebecca.jack@jpc.school.nz</a>
JOHNSON	Paul	PJ	8168	<a href="mailto:Paul.johnson@jpc.school.nz">Paul.johnson@jpc.school.nz</a>
KOWALEWSKI	Owen	KO	8847	<a href="mailto:Owen.kowalewski@jpc.school.nz">Owen.kowalewski@jpc.school.nz</a>
LEPPER	Deb NCEA & DPs P.A		8845	<a href="mailto:Deb.lepper@jpc.school.nz">Deb.lepper@jpc.school.nz</a>
LIDDALL	Jason	LJ	8119	<a href="mailto:Jason.liddall@jpc.school.nz">Jason.liddall@jpc.school.nz</a>
LOCK	Liz Principal's P.A		8839	<a href="mailto:Liz.lock@jpc.school.nz">Liz.lock@jpc.school.nz</a>
LUDASCHER	Conny	LC	8105	<a href="mailto:Conny.ludascher@jpc.school.nz">Conny.ludascher@jpc.school.nz</a>
MACANN	Rob	MR	8108	<a href="mailto:Rob.macann@jpc.school.nz">Rob.macann@jpc.school.nz</a>
MACMILLAN	Nancy	MN	8854	<a href="mailto:Nancy.macmillan@jpc.school.nz">Nancy.macmillan@jpc.school.nz</a>
MATTHEWS	Dave	MD	8125	<a href="mailto:Dave.matthews@jpc.school.nz">Dave.matthews@jpc.school.nz</a>
McHUGH	Ali	MA	8841	<a href="mailto:Ali.mchugh@jpc.school.nz">Ali.mchugh@jpc.school.nz</a>
McLAY	Mary	MM	8126	<a href="mailto:Mary.mclay@jpc.school.nz">Mary.mclay@jpc.school.nz</a>
MORRIS	Charlotte	MO	8141	<a href="mailto:Charlotte.morris@jpc.school.nz">Charlotte.morris@jpc.school.nz</a>
NORTHEY	Barb	NB	8834	<a href="mailto:Barb.northey@jpc.school.nz">Barb.northey@jpc.school.nz</a>
PAKINGA	Cecilia	PK	8851	<a href="mailto:Cecilia.pakinga@jpc.school.nz">Cecilia.pakinga@jpc.school.nz</a>
PETERS	John	PJ	8179	<a href="mailto:John.peters@jpc.school.nz">John.peters@jpc.school.nz</a>
PINGOL	Renee	PR	8153	<a href="mailto:Renee.pingol@jpc.school.nz">Renee.pingol@jpc.school.nz</a>
POTGIETER	Surette	ZS	8129	<a href="mailto:Surette.potgieter@jpc.school.nz">Surette.potgieter@jpc.school.nz</a>
RAYNER	Michael	RY	8118	<a href="mailto:Michael.rayner@jpc.school.nz">Michael.rayner@jpc.school.nz</a>
REARDON	Lynne	RL	8132	<a href="mailto:Lynne.reardon@jpc.school.nz">Lynne.reardon@jpc.school.nz</a>
RIGNEY	Gene	RG	8822	<a href="mailto:Gene.rigney@jpc.school.nz">Gene.rigney@jpc.school.nz</a>
ROGERS	Natasha	RN	8166	<a href="mailto:Natasha.rogers@jpc.school.nz">Natasha.rogers@jpc.school.nz</a>
ROWLES	Sue Public Reception/Enrolments		8800	<a href="mailto:Sue.rowles@jpc.school.nz">Sue.rowles@jpc.school.nz</a>
SARICH-DUNN	Natasha	DN	8167	<a href="mailto:Natasha.sarich-dunn@jpc.school.nz">Natasha.sarich-dunn@jpc.school.nz</a>
SATHERLEY	Matt	SM	8144	<a href="mailto:Matt.satherley@jpc.school.nz">Matt.satherley@jpc.school.nz</a>
SINCLAIR	Peter	SP	8843	<a href="mailto:Peter.sinclair@jpc.school.nz">Peter.sinclair@jpc.school.nz</a>
SMALLBONE	Judith	JS	8145	<a href="mailto:Judith.smallbone@jpc.school.nz">Judith.smallbone@jpc.school.nz</a>
SOMERVILLE	Jenny	SJ	8164	<a href="mailto:Jenny.somerville@jpc.school.nz">Jenny.somerville@jpc.school.nz</a>
STEWART	Maree	ST	8886	<a href="mailto:Maree.stewart@jpc.school.nz">Maree.stewart@jpc.school.nz</a>

<b>STOKES</b>	<b>Margaret</b>	<b>SK</b>	<b>8113</b>	<a href="mailto:Margaret.stokes@jpc.school.nz">Margaret.stokes@jpc.school.nz</a>
<b>STRACHAN</b>	<b>Graham</b>	<b>SG</b>	<b>8112</b>	<a href="mailto:Graham.strachan@jpc.school.nz">Graham.strachan@jpc.school.nz</a>
<b>STUDENT COUNTER</b>			<b>8828</b>	<a href="mailto:Beryl.arnott@jpc.school.nz">Beryl.arnott@jpc.school.nz</a>
<b>SURVILLE</b>	<b>Robyn</b>	<b>SR</b>	<b>8165</b>	<a href="mailto:Robyn.surville@jpc.school.nz">Robyn.surville@jpc.school.nz</a>
<b>SYNGE</b>	<b>Mathew</b>	<b>MS</b>	<b>8134</b>	<a href="mailto:Mathew.synge@jpc.school.nz">Mathew.synge@jpc.school.nz</a>
<b>THORNTON</b>	<b>Candace</b>	<b>TC</b>	<b>8838</b>	<a href="mailto:Candace.thornton@jpc.school.nz">Candace.thornton@jpc.school.nz</a>
<b>THURSTON</b>	<b>Gabrielle</b>	<b>TG</b>	<b>8832</b>	<a href="mailto:Gabrielle.thurston@jpc.school.nz">Gabrielle.thurston@jpc.school.nz</a>
<b>VAN DAM</b>	<b>Amber</b>	<b>DA</b>	<b>8102</b>	<a href="mailto:Amber.vandam@jpc.school.nz">Amber.vandam@jpc.school.nz</a>
<b>VISSER</b>	<b>Candice</b>	<b>VC</b>	<b>8147</b>	<a href="mailto:Candice.visser@jpc.school.nz">Candice.visser@jpc.school.nz</a>
<b>WALKER</b>	<b>Tom</b>	<b>WT</b>	<b>8102</b>	<a href="mailto:Tom.walker@jpc.school.nz">Tom.walker@jpc.school.nz</a>
<b>WALSH</b>	<b>Paulene</b>	<b>WP</b>	<b>8138</b>	<a href="mailto:Paulene.walsh@jpc.school.nz">Paulene.walsh@jpc.school.nz</a>
<b>WEBB</b>	<b>Minka</b>	<b>WM</b>	<b>8848</b>	<a href="mailto:Minka.webb@jpc.school.nz">Minka.webb@jpc.school.nz</a>
<b>WHALLEY</b>	<b>Chris</b>	<b>CW</b>	<b>8130</b>	<a href="mailto:Chris.whalley@jpc.school.nz">Chris.whalley@jpc.school.nz</a>
<b>WILSON</b>	<b>Taryn</b>	<b>TW</b>	<b>8124</b>	<a href="mailto:Taryn.wilson@jpc.school.nz">Taryn.wilson@jpc.school.nz</a>
<b>WOOD</b>	<b>Jacinta</b>	<b>WJ</b>	<b>8148</b>	<a href="mailto:Jacinta.wood@jpc.school.nz">Jacinta.wood@jpc.school.nz</a>
<b>WORRALL</b>	<b>Claire</b>	<b>WL</b>	<b>8127</b>	<a href="mailto:Claire-worrall@jpc.school.nz">Claire-worrall@jpc.school.nz</a>
<b>WRIGHT</b>	<b>Denise</b>	<b>WD</b>	<b>8115</b>	<a href="mailto:Denise-wright@jpc.school.nz">Denise-wright@jpc.school.nz</a>
<b>ZOING</b>	<b>Rex Truancy Officer</b>		<b>8817</b>	<a href="mailto:rex.zoing@jpc.school.nz">rex.zoing@jpc.school.nz</a>