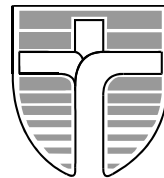




John Paul College, Rotorua

Whitworth Road, Rotorua. www.jpc.co.nz Ph: 07 3478 795 Fx: 07 3461 271
A WEEKLY NEWSLETTER FOR THE JOHN PAUL COLLEGE COMMUNITY
Term 2, Issue 16 25th May 2015



Ma te pono Me te aroha – Through Faith and Love
2015 School Theme : 'Per Ardua Ad Astra – Through Adversity To The Stars'

Dear Parents/ Caregivers

Kia Ora, Malo e Lelei, Talofa, Greetings.

J.P.C DAY

Last Wednesday we celebrated JPC Day, which is a great honour because it allows us to acknowledge the three wonderful charisms within the college, of Blessed Edmund Ignatius Rice, St Mary McKillop and St John Baptist De La Salle, including the religious Brothers and Sisters that served these charisms so well for decades in Rotorua.

We are also grateful as a Catholic school that we have the full support of our priests, Fr Eamon and Tavia, who generously say Mass for us in their busy schedule.

MID-YEAR EXAMS: Year 11-13: 25th-29th May

Please check with your children their exam timetable and ensure they arrive well on time with the correct equipment and have eaten a healthy meal.

SCHOOL FEES

Thank you to all parents who pay school fees on time, since it allows us to continue to provide a high quality education to your children.

God bless

Patrick Walsh - Principal



AT THE SCHOOL GATE

As the wet weather descends upon us, please be mindful of our students entering and exiting the campus before and after school and the lack of visibility in the traffic congestion.

Please also be mindful not to park on our neighbours front lawns. *Thank you*

IN THIS WEEK'S NEWSLETTER

Page 2 ICAS Science competition information
Events Calendar

Page 3 News from the Sick Bay

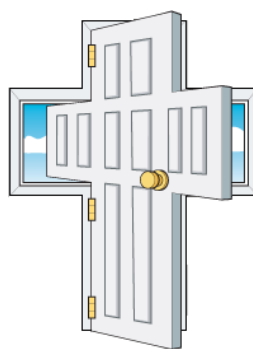
Page 4 NZQA & Scholarship Fees

Biology Olympiad information

Page 5 News from the Sports Desk

Page 6/7 Careers Newsletter

Page 8/9 Advertising



JOHN PAUL COLLEGE

OPEN NIGHT

THURSDAY 18TH JUNE

COMMENCING WITH
TOURS OF THE
CAMPUS AT 5PM

IMPORTANT DATES

| Event | Date |
|-----------------------|--------------------------------|
| Junior reports issued | Friday 12 th June |
| Junior Report Evening | Tuesday 16 th June |
| OPEN NIGHT – 5p.m | Thursday 18 th June |
| Senior reports issued | Friday 26 th June |
| Senior Report Evening | Tuesday 30 th June |

CALENDAR OF EVENTS TERM 2

New events added

May

25-29th Year 11-13 Mid-Year Exams

29th WinTec Open Day (HS)

29th-9th June French Exchange

June

1st **Queen's Birthday – no school**

1st-5th RE Snr Assessment Week (BF)

3rd ICAS Science (LC)

4th Yr 11 Drama Play – 6.30-9pm

8th-12th Year 10 Career Quest (BE)

11th Yr 10 Parish Mass

12th Waiariki Open Day (HS)

12th Jnr Reports Issued

15/16th Yr 11 Retreats (FB)

15th ICAS Writing

16th Jnr Report Evening

16th ICAS Spelling

OPEN NIGHT: Thursday 18th JUNE

23rd Yr 9 Market Day (CT)

23rd Signum Fidei Meeting 4-6pm Whare

25th Yr 10 Market Day (CT)

26th Kapa Haka Regionals

26th Yr 13 Parish Mass St Mary's

26th Snr Reports Issued

30th Snr Report Evening

July

2nd Yr 13 Science Zoo Trip (LC)

3rd End of Term 2

SCHOOL BALL: Saturday 4th JULY

THE UNIFORM SHOP IS OPEN

MONDAY TO WEDNESDAY

8.00a.m to 4.00p.m Term time only

CLOSED 11.30-12.30

Kapa haka



WEDNESDAY 3.30-5.00p.m

Girls Only – Dress fitting

SATURDAY, SUNDAY,

MONDAY

10.00am-5.00pm

FULL GROUP

PRACTICES

THIS

WEEK

Only 5

weeks to

regionals

ICAS SCIENCE COMPETITION

Wednesday 3rd June

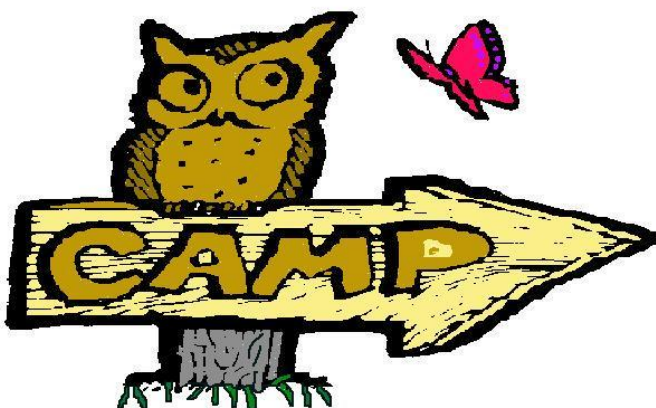
Students in Years 8, 9 and 10 who are in the accelerate classes will sit the paper in their normal Science lessons, everyone else will complete the examination in the library during Period 5.

Students will have to bring the following equipment:

- ☐ a 2B or B pencil;
- ☐ an eraser;
- ☐ a calculator;
- ☐ a ruler.

Ms C Ludascher – HOF Science

E: conny.ludascher@jpc.school.nz



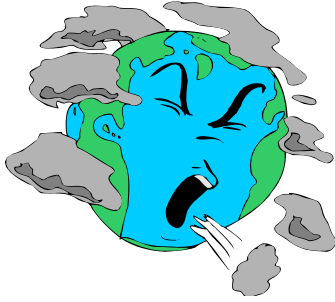
Year 8 Camp

16th-20th November

Information will soon be distributed to give parents the opportunity to prepare for the cost of this camp.

Ms J Grahamslaaw – Yr 8 Dean

E: jan.grahamslaw@jpc.school.nz



FROM THE SICKBAY

Now that the chill of Winter has arrived, if your child has 'picked up' the vomiting bugs or head colds, which are surfacing, please keep him/her at home to avoid infecting others in the school. Warm, moist classroom conditions are breeding grounds to infect others!!

To assist your child's wellness this Winter, we are encouraging students to carry a small packet of tissues and a small bottle of hand sanitiser in their school bags to use. Please encourage them to drink plenty of fluids throughout the day and not to share drink bottles

WE HAVE STUDENTS PRESENTING WITH NITS IN THE JUNIOR SCHOOL.

Simply put, you can do everything right and your family could still end up with lice. And of course, head lice have nothing to do with hygiene or income level; anyone can get them. The most common route of transmission is head to head contact, such as two kids bending over the same book. Because lice can't live long off the scalp, it's much harder, but not impossible, for lice to be spread by sharing hats, brushes, hair accessories and combs. Please encourage your children not to share these items. Please check your child's hair and treat appropriately to help contain the infestation.



Shampoos and lotions.

Medicated shampoos or lotions (known as pediculicides because they contain a pesticide to kill the lice) are the most common treatment. It's very important to follow the treatment directions exactly. Most will require a follow-up application seven to 10 days later. Whatever treatment you choose, you will still need to use a special fine-tooth comb to comb through wet hair and remove all the nits. Comb every three or four days for two weeks.

YEAR 9 DENTAL TREATMENT

Forms are available at the sick bay with the list of dentists who provide free treatment up to the age of 18. Please ask your child to see the nurse to collect the information so you are able to register at a dentist of your choice.

E: cathy.flavell@jpc.school.nz

STREP THROAT CAN LEAD TO RHEUMATIC FEVER

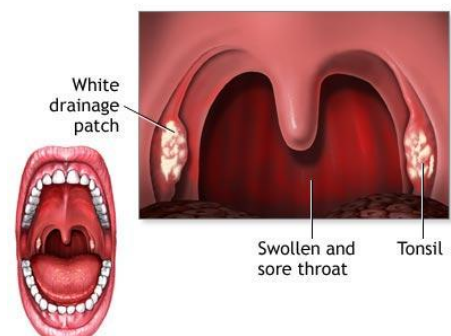
Lakes DHB along with RotoVegas Youth Health and School Nurses are working together to reduce the incidence of Rheumatic Fever by two-thirds, to 1.4 cases per 100,000 people by June 2017. The 2010-11 hospitalisation data show the annual rate is 4.2 cases per 100,000 people.

Rheumatic fever is a serious but preventable illness. It occurs mostly in Maori and Pacific children (aged 5-19 years) due to a bacterial infection called GROUP A STREPTOCOCCAL, which may cause a sore throat (known as strep throat). If this bug is not treated, it can cause Rheumatic Fever and Heart damage for life. This means a lifetime of feeling breathless and tired and can also shorten their life.

Rheumatic fever is easy to prevent, if your child has a sore throat get it checked. The nurse at school can check and send a swab off and also issue antibiotics. Your child will be given a 10 day course of antibiotics to take. It is important that your child finishes the full course of antibiotics unless notified by the nurse to stop.

IF YOUR CHILD HAS A SORE THROAT.....

| GET IT CHECKED | IF NOT CHECKED |
|--|---|
| Throat checked by School Nurse | Throat not checked by health worker |
| If strep A throat, then antibiotics are needed | Sore throat may be a strep throat and doesn't get treated |
| Make sure your child finishes the full course of antibiotics | Rheumatic fever develops and can lead to rheumatic heart disease |
| No rheumatic fever | Heart damage |
| HAPPY HEALTHY HEART | HEART PROBLEMS FOR LIFE AND INJECTION EVERY 28 DAYS AND POSSIBILITY OF HEART VALVE REPLACEMENT. |



CLASSES FIND GENEROSITY TASTES SWEET

Year 12 student, **Loren Skudder-Hill**, has a self-professed passion for charity work and is undertaking a massive project for a national organisation. Loren has started creating a children's cookbook, with the profits being donated to New Zealand charity KidsCan.

Loren held her first cooking class at St Mary's Primary School last Thursday, teaching a group of pupils how to make cheesymite scrolls and cupcakes. During the cooking session, Loren took photos, which will accompany the recipes in the cookbook.

She said the project was "massive" and would be a lot of work but it will be worth it in the end. *"Probably the biggest task I'm facing is finding sponsorship; so far we've found a publisher and Countdown is sponsoring the ingredients for the kids to use – every little bit helps."*

"The idea just came to me one day and I thought it would be a fun way to raise money for a really great cause." The cookbook was designed to encourage kids to get into the kitchen with their parents and the plan is to have mainly nutritious recipes with a few treats like the cupcakes and scrolls.

Loren is hoping to have the book ready for publishing by July.

For video of Loren's cooking class at St Mary's Primary school, go to www.rotorudailypost.co.nz
An excerpt from the Daily Post: Monday 25th May

New Zealand International Biology Olympiad (NZIBO)

The 27th International Biology Olympiad (IBO) will be held in Vietnam in July 2016, and New Zealand's International Biology Olympiad (NZIBO) committee will again be entering a team.

NZIBO is designed to foster interest, participation, and excellence in biology through participation of secondary school students in the New Zealand Biology Olympiad Programme.

Year 11 and Year 12 students can now sign up to trial for the 2016 team. The cost to register for the two-hour multi-choice thinking skills entrance exam is \$30 per student. The exam will be held on Wednesday the 19th August, with registration closing on the 7th of August. The top 200 students will be invited into the tutorial programme.

Register at: <http://www.nzibo.org/nzibo/>

2015 NZQA & SCHOLARSHIP FEES

The table below outlines candidate fees for NZQA and Scholarship qualifications.

Fees for domestic (non-international) students:

| | |
|-----------------------------|-----------------------|
| NCEA entry | \$76.70 per candidate |
| Each NZ Scholarship subject | \$30.00 per subject |

Fees for International Fee Paying Students:

| | |
|-----------------------------|------------------------|
| NCEA entry | \$383.30 per candidate |
| Each NZ Scholarship subject | \$102.20 per subject |

Financial Assistance (domestic students only) can be provided if one of the following conditions is met:

- be receiving a Work and Income or StudyLink benefit or have a Community Services card
- have joint family income that qualifies for Community Services card
- have two or more children entered as candidates with fees more than \$200.

Financial application forms and information regarding financial assistance are available from school

(deb.lepper@jpc.school.nz) or on the NZQA website www.nzqa.govt.nz/financialassistance

Invoices will be sent out shortly by the school and all fees need to be paid (including the return of financial applications forms) to the school no later than:

Friday 21st August.

Peter Sinclair
DP Curriculum

FROM THE SPORTS DESK

WHERE TO LOCATE DRAWS FOR WINTER SCHOOL SPORTS

NETBALL

<http://www.sportsground.co.nz/rotoruanetball>

BASKETBALL

<http://rotorubasketball.org.nz/>

HOCKEY

<http://www.rotoruahockey.co.nz/>

FOOTBALL

<http://waibopfootball.co.nz> (Click on Fixtures and Results.)

RUGBY

<http://www.boprugby.co.nz/community-rugby/secondary-school-rugby/draws--results/>

Senior Cross Country Results

Boys: 1st Joshua Gapes. 2nd Keegan Pepper. 3rd Warrick Auge

Girls: 1st Paige Satchell. 2nd Anna Piebenga. 3rd Tacy Aitchison

HOCKEY NEWS

Reminder fees are required to be paid. I wish to thank the parents/caregivers who have paid fees. These are extracurricular fees and do not come under the JPC flat fee structure, so if you wish to establish automatic payment for Hockey Fees you must contact Julie Boyce to set these up. The college has been paying turf fees since March and has now received the April game fees. The registration fees for both the Yr 7/8 and secondary school students is due any time now and will be big.

If there are issues with fee payment please contact Ms Northey through personal contact and/or Email barb.northey@jpc.school.nz

FROM THE NETBALL ROTORUA CENTRE

There is NO NETBALL this weekend

CAREERS NEWSLETTER

Please don't hesitate to make contact with the Careers Office if you have any queries.

| | | |
|----------------|---------------------|---|
| Mrs S Hewitson | Careers Advisor | E: Sheryl.hewitson@jpc.school.nz |
| Mrs J Thompson | Careers Assistant | E: jan.thompson@jpc.school.nz |
| Mr P Casey | Gateway Coordinator | E: pat.casey@jpc.school.nz |

WHITECLIFFE OPEN DAY

Registration for the **2015 Whitecliffe Open Day** programme are now open.

These are being held earlier than other years.

You will be able to see Exhibitions of current students work and hear from current Year 4 students who will talk about studying at Whitecliffe.

HOD's will present what is taught on the Whitecliffe programmes.

Interested students and their parents are all invited.

Times are 10 am – 1 pm each day – lunch is included

The dates are:

- | | |
|--|-------------------|
| <input type="checkbox"/> PHOTO MEDIA | Wednesday 3 June |
| <input type="checkbox"/> FINE ARTS | Friday 5 June |
| <input type="checkbox"/> FASHION DESIGN | Wednesday 17 June |
| <input type="checkbox"/> GRAPHIC DESIGN | Friday 19 June |

Registrations are required. Please email receptionist@whitecliffe.ac.nz

TARATAHI

Taratahi Wairarapa will be holding a taster course from Sunday July 5th to Thursday July 9th 2015.

This taster course is designed for students who may be interested in a career in Agriculture and costs \$100 per student. It comprises four fun-filled days where students aged between 16 and 18 can check out Taratahi's Masterton campus and see what it would be like for them to live and learn at Taratahi.

Students have the opportunity to spend time out on the farm, in the dairy shed, in the woolshed, in the classroom, meet the tutors, farm managers and staff.

If any students are interested application forms are available at the Careers office. Other dates are available also later in the year.

WAIARIKI INSTITUTE OF TECHNOLOGY – TRADES ACADEMY

The Waiariki Trades Academy has additional courses being run in Semester 2.

These courses are for year 12 and 13 Students and will begin on Thursday the 23rd July and finish at the end of October.

Courses on offer are:

- Sport- Personal fitness – Thursdays
- Early Childhood – Thursdays
- Business Studies - Thursday and Fridays.

These courses offer level 2 and 3 credits. If any students are interested please see the Careers Office.

CAREERS NEWSLETTER (continued)

THE UNIVERSITY OF AUCKLAND

University of Auckland Parent information evening: 11th June 2015

School students and parents are invited to attend an information evening to explore study options, entry requirements, costs, accommodation, and student life at the University of Auckland. For more information and to register for Parent Evenings see the events section at www.auckland.ac.nz/parents

ENGINEERING EVENTS

Enginuity Day - A day for year 13 female students to visit campus and experience what engineering really is. 2 July 2015, University of Auckland City Campus.

For more information contact Amanda Clinton: a.clinton@auckland.ac.nz

ENGINEERING FUTURES EVENING

If Maths and Physics are your passion and making a real difference in the world is your dream: then chose a career in Engineering. Come along to our Engineering Futures Evenings in Auckland and Wellington and hear everything you need to know about studying at the faculty of Engineering at the University of Auckland.

Auckland – Thursday 23 July and Thursday 30 July, 6.30 – 8pm. Venue – University of Auckland City Campus,

Fisher and Paykel Auditorium, OGGB, 12 Grafton Road

Wellington – Friday 14th August, 6.30pm – 8pm. Venue – TBC

For more information and to register your interest visit: www.engineering.auckland.ac.nz/engineering-futures

EDUCATION AND SOCIAL WORK EVENTS

Experience Day – get a taste of life as a University student. This day is a practical and engaging way for secondary school students who have an interest in teaching, physical education, social work or human services to get a taste of life as a University student at the Faculty of Education and Social Work and learn about what they on offer.

Epsom (Auckland) Campus: Early Childhood, Primary and Secondary Teaching, Physical Education, Social Work and Human Services.

Date: Tuesday 28 July 2015

Manukau Campus: Primary Teaching

Date: Monday 3 August 2015

Regional Information Sessions

Tauranga Date: Tuesday 11 August 2015, 5.30pm – 7pm

Location: Hotel Armitage, 9 Willow St

Hamilton Date: Wednesday 12 August 2015, 5.30 – 7pm

Location: Novotel Tainui Hotel, 7 Alma St,

For more information and to register your interest visit: www.education.auckland.ac.nz/info-sessions

CREATIVE ARTS TOURS AND PORTFOLIO WORKSHOPS

Elam School of Fine Arts (May – October)

School of Architecture and Planning (May – October)

School of Music (May – October)

Portfolio Workshops (September)

Interested in a tour or workshop?

Visit www.creative.auckland.ac.nz/tours to register for a tour and read more about upcoming portfolio workshops.

APPLICATIONS NOW OPEN FOR SCHOLARSHIPS

Applications for the University of Auckland's first-year Scholarships are opening earlier than usual this year.

From 13 May 2015 students will be able to apply for the four main Scholarships:

- The University of Auckland Scholarships (100 available)
- Chancellor's Awards for top Maori and Pacific Scholarships (44 available)
- Alumni Scholarships (20 available)
- Jubilee Awards (135 available)

Students have until 5pm on 25th August 2015 to apply, and will be notified of their outcome by 16th October.

Check out the scholarships e-book for the steps of making your online application, advice about choosing your referees, and how to best complete the personal statement section.

Scholarships e-book <http://ebooks.auckland.ac.nz/2016-scholarship-ebook>

Scholarships website www.scholarships.ac.nz

REACH 900+ EMAIL ADDRESSES ON OUR DATABASE

Contact sue.rowles@jpc.school.nz in the first instance, then an invoice will be issued by the JPC PTA.

PLUGZ 4 LUGZ

Grade 5 custom made hearing protection

MADE ON THE SPOT

Comfortable* Reusable* Reliable* Waterproof

Work, Play, Sleep and Swim

In your very own Grade 5 earplugs

Grant Rowles, Rotorua

(07) 348 0908 / or 027 275 6848

www.earmold.com.au for more info

"Hear today, gone tomorrow without adequate hearing protection"



Speedy Signs
grow your business faster
www.speedysigns.co.nz

Your Complete Branding Solutions Partner

1198 Arawa Street Ph: 349 1000 E: rotorua@speedysigns.co.nz

EmbroidMe
www.embroidme.co.nz

Steve & Christine Franklin

Jim's Mowing – Pukehangi

21 Edward Payton Grove
Rotorua 3015

Ph: (07) 349 4568

If no reply: (07) 347 2246

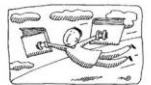
M: 027 292 3263

E: steve.franklin@jims-mowing.co.nz



Lawn mowing, Hedge Trimming, Rubbish Removal
Pruning Services, Waterblasting & Landscaping
Property & Garden Maintenance

**Breathe...new...life
Into your writing**



BMS helps equip writers with the confidence to complete stories and books – family histories a speciality.

Contact: MS at BMS Ltd
ms@bms.co.nz or (07) 349 4107

Pilates Plus
BRING A FRIEND
2 for 1 DEAL

Posture
Flexibility
Core Stability
Balance & Co-ordination
Strengthening & Toning
Injury prevention & rehabilitation
Back & neck pain management
Pelvic floor control
Body Awareness

LOW IMPACT
SUITABLE FOR ALL AGES

Contact Hollie for class times and bookings on 0221944265
www.facebook.com/hollieturnerpilatesplus

Hollie Turner entry
DMA Clinical Pilates Instructor
Over 13 years experience as a physiotherapist
Specialising in falls prevention and rehabilitation
Bachelor of Physiotherapy, University of Otago

10 week block classes \$110
Casual members \$13
Central Rotorua venues
Individual assessments available
Classes can be tailored to sports
groups, schools, seniors,
workplaces

NO ACC SURCHARGE ON X-RAYS

- CT • MRI
- Screening and Vascular Ultrasound
- General Musculoskeletal
- Intervention Procedures and Echocardiography
- All Maternity Ultrasounds
- Ultrasound Guided Biopsies
- Ultrasounds
- (Immigration CXRs)

Mokoia Radiology

ACC/Private and Insurance Funded

We are also pleased to be the first to offer 4D scanning in the Rotorua area.

Bringing patient care and imaging technology together
X-rays – No appointment necessary.

For all other services call us to make an appointment.

**Central Health 1181, Crnr Amohia & Haupapa
Streets Ph 07 343 7468
www.mokoiaradiology.co.nz**

GUITAR & BASS LESSONS

Competitive prices!!

Always wanted to learn?
I will have you playing your
favourite song in no time!

CONTACT KATE REDFERN
021 123 5472
klredfern1@me.com



COMMUNION DRESSES & VEILS

For Sale & Made to Order

(from \$45)

**For all alterations and a perfect fit
(for ball gowns, wedding gowns etc)**

Phone Betty
(07) 3477 112 or 021 251 2306

PLEASE SUPPORT OUR ADVERTISING SPONSORS



PERRY BELL
INSURANCE AND MORTGAGES

MORTGAGE BROKER SERVICES

New Finance and Re-Finance
Own Home and Investment Properties

INSURANCE BROKER SERVICES

Life and Trauma Insurance
Mortgage Repayment Cover
Medical/Health Insurance
Income Replacement Insurance

FOR QUOTES AND ADVICE CALL ME

p: 07 349 1270 m: 027 477 6796
e: perry@perrybell.co.nz w: www.perrybell.co.nz



General Medical Services
Immunisations
Medical Examinations
Long Term Condition
Management

Rotorua Medical Group

Central Health and Fairy Springs Medical Centre

"NEW PATIENTS WELCOME"

1 Practice + 2 Sites = Convenient Health Care 4 U

Both sites open Mon-Fri, 8.00am to 5.00pm

Telephone: 347 0000 Email: admin.rmg@rgpg.co.nz www.rotoruamedical.co.nz

Our comprehensive and excellent family health care services include a

Drop In Clinic – no appointment necessary

Central Health, 1181 Amohia Street (next door to Central Pharmacy)

Mon to Fri between 9.00am and 11.00am and 2.00pm and 4.00pm

Fairy Springs Medical Centre, 10-100 Fairy Springs Road, Rotorua

Mon to Fri between 9.00am and 11.00am

Need a Holiday?

Holidays restore what everyday
life steals from you...it's true!

Harvey World Travel Rotorua is proud
to support the Students, Families and
Teachers at JPC. Contact us now for
all your Leisure, Corporate and Group
travel requirements. 100% locally
owned and operated.

Harvey World Travel Rotorua
1235 Tutaneikai St, 07 349 4130
Rotorua@harveyworld.co.nz



**HARVEY
WORLD TRAVEL**
THE TRAVEL PROFESSIONALS™

