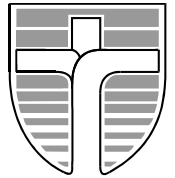




# John Paul College, Rotorua

Whitworth Road, Rotorua. [www.jpc.co.nz](http://www.jpc.co.nz) Ph: 07 3478 795 Fx: 07 3461 271  
A WEEKLY NEWSLETTER FOR THE JOHN PAUL COLLEGE COMMUNITY  
Term 3, Issue 22 20<sup>th</sup> July 2015



*Ma te pono Me te aroha – Through Faith and Love*  
2015 School Theme : 'Per Ardua Ad Astra – Through Adversity To The Stars'

Dear Parents/ Caregivers

Kia Ora, Malo e Lelei, Talofa, Greetings.

Welcome back to Term 3. I trust you had an enjoyable break with your children, including quality time as a family.

### TERM III: GETTING DOWN TO BUSINESS; CRITICAL FOR ACADEMIC SUCCESS (Years 10-13)

This term is of critical importance to the academic success of your child. They should be focussed on:

- Completing the syllabus
- Completing all internal assessments
- Preparing for external NCEA exams early in Term 4
- Attending additional tutorials and Homework Centre if they need more support.

Deans and the Academic Counsellor will be contacting you if they have any concerns. Please give them your full cooperation.

### SCHOOL FEES

Thank you to all parents who continue to pay school fees. They are essential for providing your children with the high quality education you have come to expect at John Paul College.

God bless

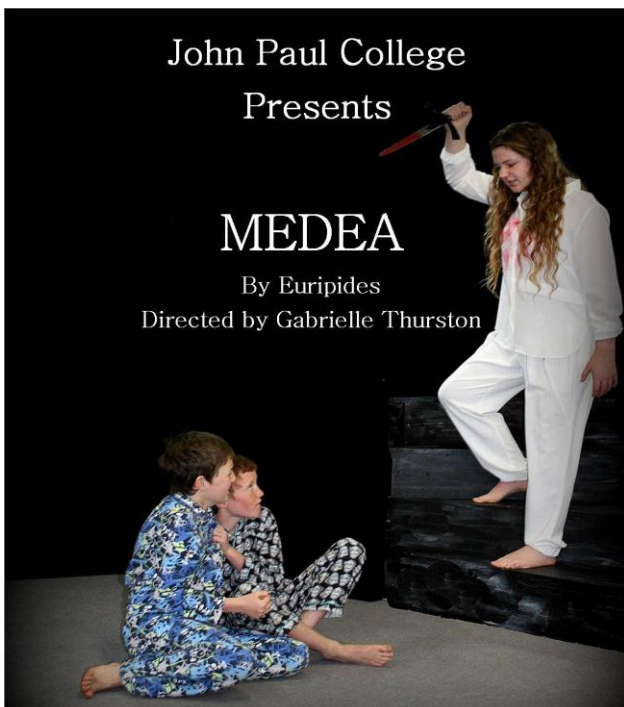
Patrick Walsh - Principal

**Please note change of uniform shop open days: MONDAY, WEDNESDAY, FRIDAY**  
**Open 8.00a.m – 4.00p.m**  
**CLOSED TUESDAYS AND THURSDAY**

John Paul College  
Presents

**MEDEA**

By Euripides  
Directed by Gabrielle Thurston



THREE PERFORMANCES ONLY  
31st July – 1st August 2015  
Casa Blanca  
Tickets John Paul College



Kia ora koutou,  
**Whanau Support Group hui** is Monday 3 August 5.30pm to 7pm in the whare, we will be following up on the actions from the last hui and planning for the rest of the year.

Shared kai at 7pm to 7.30pm, hope to see you there, na Eugene.

**MEDEA**  
Three performances only  
31<sup>st</sup> July- 7.30pm  
1<sup>st</sup> August – 2.00pm & 7.30pm  
at Casa Blanca  
Tickets available at JPC  
Adults: \$15 Students: \$10

## CALENDAR OF EVENTS TERM 3

### July

20<sup>th</sup> 1<sup>st</sup> day of Term 3  
20<sup>th</sup> – 2<sup>nd</sup> Aug National Gymsports Akld  
27-29<sup>th</sup> Year 12 Retreats  
27-31<sup>st</sup> Speech Exams  
28<sup>th</sup> ICAS English  
28-30<sup>th</sup> JPC Science Fair  
30<sup>th</sup> Australian Maths Comp

### August

3<sup>rd</sup>-5<sup>th</sup> RE Senior Assessment Week – BF  
3<sup>rd</sup>-7<sup>th</sup> Year 10 Careers Interviews  
4<sup>th</sup>-5<sup>th</sup> Year 12 ABL Camp  
4<sup>th</sup> Yr 9/10 Get 2 Go Challenge –FA  
5<sup>th</sup> BOP Badminton Juniors Comp – CT  
6<sup>th</sup> Senior B/Ball Champs – FA  
Yr 10 – Reserve Bank Talk – HS  
7<sup>th</sup> Yrs 7/8 – Badminton CT  
7<sup>th</sup> Yrs 7/8– Dio Regeneration Retreat-BF  
11<sup>th</sup> BOP Rugby 7s – Y7/8 FA  
ICAS Mathematics  
12<sup>th</sup> BOP Badminton Snrs – CT  
13<sup>th</sup> Y11-13 Drama Trip Akld –  
14<sup>th</sup> Dance Trip Taupo  
17<sup>th</sup> Maori Careers Talk – HS  
18-20<sup>th</sup> Year 10 Retreat – St Marys Church  
ICAS Mathematics  
MathsMind – 6-8pm  
20-24<sup>th</sup> Yr11-13 Prelim Exams  
21-22<sup>nd</sup> Chanel Shield – Gisborne  
21<sup>st</sup> Year 9 Parish Mass  
27<sup>th</sup> BOP Science Fair  
28<sup>th</sup> Daffodil Day

### ICAS ENGLISH

ICAS English will take place on Tuesday 28th July. Students will be given specific times and places to attend (*they should listen to notices carefully this week*) and these will also be published in next week's newsletter.

**Mr Bloomfield.**

HoF: Languages & English

E: [stephen.bloomfield@jpc.school.nz](mailto:stephen.bloomfield@jpc.school.nz)

### HOCKEY NEWS

Thank you for those caregivers who have paid their hockey fees. There are still too many outstanding!! Please address these.

**Congratulations to Lorrin Tiedt**, part of the Midlands U 18 team who were runner ups to a very good North Harbour team this year at Nationals. A gold and silver medals in two years. Well done.

Also **congratulations to Mikayla Wepa and Anna Piebenga** who represented U18 BOP team in Dunedin in the Tier 2 U 18 tournament.

**Thanks again to our coaches, managers and parental supporters.**

## THE UNIFORM SHOP IS OPEN

**MONDAY, WEDNESDAY, FRIDAY  
8.00a.m to 4.00p.m Term time only  
CLOSED 11.30-12.30**

**Please note that Postie Plus stock no  
JPC uniforms**

### ROTORUA SPEECH AND DRAMA COMPETITIONS

The 70th Rotorua competitions were held recently at the Sir Howard Morrison Performing Arts Centre. The competitions first held in Rotorua in 1946 are the largest in New Zealand. Many John Paul College students took part in the event and all did extremely well. John Paul College students took all places in the top competition with Head Girl Rebecca Colby 2015 Performer of the Year, 2nd Steven Glyde, 3rd Zoe Spence, 4th Arvin Pingol and 5th Cassandra Clare.

These students were all outstanding in the programmes they presented. Rebecca Colby and Steven Glyde have been nominated to compete at PACANZ Nationals in Palmerston North on 16 October. Congratulations – **Gabrielle Thurston HoD Drama**

### ICAS MATHEMATICS

#### 2015 AUSTRALIAN MATHEMATICS COMPETITION

The 2015 Australian Mathematics Competition will be held on Thursday the 30th of July. Further details will available in the daily notices.

#### 2015 ICAS MATHEMATICS COMPETITION

The 2015 ICAS Mathematics Competition will be held on Tuesday the 11th of August. Further details will available in the daily notices.

- This competition is compulsory for all enrichment classes and optional for other students.
- Students in Year 7 and 8 are NOT allowed to use a calculator.
- All other year levels are allowed to use a calculator.

**Lara Cordonni – Mathematics Department**

TERM 2  
JUN/15



# BERTH ALLOCATIONS 2016

IMPORTANT - Please read and save this email to access your Berth Allocations for 2016.



We have been offered three guaranteed berths on the Spirit of Adventure during 2016. If your senior student is interested please check the Spirit of Adventure website for details and contact me as soon as possible to confirm the berth for your student. [www.spiritofadventure.org.nz](http://www.spiritofadventure.org.nz)

## Voyage Dates

	Departure	Arrival	Voyage No	Departure Port	Arrival Port	Berth F/M	Status
<input type="checkbox"/>	07-Mar-2016	16-Mar-2016	711	Wellington	Tauranga	Female	Pending
<input type="checkbox"/>	17-Mar-2016	26-Mar-2016	712	Tauranga	Auckland	Female	Pending
<input type="checkbox"/>	14-Jun-2016	23-Jun-2016	718	Auckland	Auckland	Male	Pending



### **BOP Climbing results.**

Congratulations to the 4 teams who took part in the climbing competition on Friday 26th.

We had another great success taking out the senior competition as well as both junior competitions.

Results are as follows

1<sup>st</sup> Senior Boys Andre Le Lievre  
3<sup>rd</sup> Senior Boys Matai Lockwood  
2<sup>nd</sup> Senior Girls Theresa McLean



Matai, Andre and Theresa also took out the team's event bringing home the trophy.

## **GYMSPORTS RESULTS FROM 29<sup>th</sup> JUNE**

John Paul College competed in the Rotorua Secondary Schools Gymsports competition held at MIGS on Monday 29th June. This was an excellent competition for our Gymnasts prior to attending the National Championships in August.

Results:

### **Men's Artistic Gymnastics**

#### **Novice B**

1<sup>st</sup> Ivan MacGregor, 2<sup>nd</sup> Dale Jacobs, 3<sup>rd</sup> Casey Dykstra     **JPC Team 1st**

### **Women's Artistic Gymnastics**

Level 1            1<sup>st</sup> Sarah Leishman, 2<sup>nd</sup> Louise Cooke, 3<sup>rd</sup> Paulene Padayhag

Team1            Sarah, Louise, Paulene, Chelsea Downie 1<sup>st</sup>

Team 2            Sophie Smallbone, Sophie Bell, Ruby Murphy 2<sup>nd</sup>

Level 2            1<sup>st</sup> Georgia Howard, 2<sup>nd</sup> Danielle Lee, 3<sup>rd</sup> Baylee Neal     **JPC Team 1st**

Level 3            1<sup>st</sup> Shivani Patel, 2<sup>nd</sup> Megan Hughes, 3<sup>rd</sup> Annabel Fordyce

Team 1            Shivani, Annabel, Priya Patel, 1<sup>st</sup>

Team 2            Megan, Nakita Hopson, Hannah Hughes 2<sup>nd</sup>

Level 4            1<sup>st</sup> Anja Jennings, 2<sup>nd</sup> Paige Ward, 3<sup>rd</sup> Rebecca Lindsay     **JPC Team 1st**

Level 5            1<sup>st</sup> Mikaela van den Heuvel

### **TUMBLING**

C Grade Boys            Ivan MacGregor 1<sup>st</sup> Casey Dykstra 2<sup>nd</sup>

B Grade Boys            Dale Jacobs 1<sup>st</sup>

C Grade Girls            Sophie Smallbone 1<sup>st</sup>, Sophie Bell 2<sup>nd</sup>, Ruby Murphy 3<sup>rd</sup>.

B Grade Girls            Megan Hughes 3<sup>rd</sup>

A Grade Girls            Baylee Neal 2<sup>nd</sup>, Nakita Hopson 3<sup>rd</sup>

Elite Girls            Anya Jennings 2<sup>nd</sup>, Paige Ward 4<sup>th</sup>

### **TRAMPOLINE**

C Grade Girls            TeMania Whata 1<sup>st</sup>

B grade Girls            Nakita Hopson 1<sup>st</sup>, Hannah Hughes 2<sup>nd</sup>

A Grade Girls            Anyssa Rimmer 2<sup>nd</sup>, Louise Cooke 3<sup>rd</sup>

Junior Elite Men            Daniel Sherman 1<sup>st</sup>

Women            Megan Hughes 4<sup>th</sup>, Brianna Cross 5<sup>th</sup>

Elite Men            Tyson Rimmer 2<sup>nd</sup>

Women            Rebecca 2<sup>nd</sup>

**Mrs V Cooney – Teacher in Charge**

E: [val.cooney@jpc.school.nz](mailto:val.cooney@jpc.school.nz)

## **'MY WORLD WAR 1 HERO' SPEECH COMPETITION**

On Thursday July 2nd 7WJ held a speech competition, judged by Mrs Maree Kinder, who commented on the high standard of the speeches, and also spoke about her trip to Gallipoli to celebrate ANZAC Day.

The topic was *My World War 1 Hero*. The students had to speak as if they were the Hero.

1<sup>st</sup> Place Ashleigh Pola

2<sup>nd</sup> equal Riya Thumma and Kapua Warbrick

3<sup>rd</sup> Place Riley King

Thank you to Mrs Kinder for giving up her time to judge our competition.

**Congratulations to Hannah Gapes** who gained three placings for the following Cross Country events over the holidays:

1<sup>st</sup> Girls 11&12 Rotorua Lake City Championship  
(Rotorua)

1<sup>st</sup> Girls 11&12 Waikato/BOP Championship  
(Hamilton)

3<sup>rd</sup> Girls 11&12 North Island Championship (Taupo)  
*Well done Hannah.*



**KEEP  
CALM**  
And come to the  
**PTA  
QUIZ NIGHT**

**FRIDAY 11<sup>th</sup> SEPTEMBER**

In the Edmund Rice Centre

From

6pm for Silent Auction

Drinks and nibbles

Quiz starts at 7pm

**Major 2015 Fundraiser for Co-curriculum equipment for the students**

Teams of 6 – 8 people  
(Parents, Neighbours, Friends and Senior  
Students Welcome)  
\$10 per person

Bring Money \$\$\$ for a

Cash Bar



& Quick Fire Raffles



*The PTA will provide water & nibbles on the tables*

**Dress up is Compulsory!** - Come dressed in your Team's Theme

*There will be a prize for the team voted best dressed*

There will be a **Silent Auction** packed with outstanding items that have been kindly donated by our local Business Community. This is **YOUR** chance to secure some fabulous products and services at amazing prices while supporting the students of JPC!

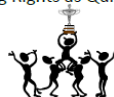
Be in to **WIN**

Prizes

Quick Fire Raffles

& .....

Bragging Rights as Quiz Winner!



**Challenge Others, Support your School, Come and Meet your School Community**

Donations for prizes are now being sought for this fun-filled, major fundraiser.

All proceeds go towards student co-curriculum equipment

Should you, someone or business you know wish to donate and be advertised in the school newsletter for your generosity, please make contact with Liz Lock, Principal's

P.A, at [liz.lock@jpc.school.nz](mailto:liz.lock@jpc.school.nz)

## **FROM THE CAREERS OFFICE LAW CAREER EVENT**

Will be held at Rotorua Boys' High School on **Monday 10 August, from 2.00pm - 3.00pm.**

The structure of the Otago law degree and the career opportunities the degree offers will be explained. These career opportunities are not limited to legal practice but range widely from business, through Government departments to working for international organisations. Practical examples of how the law is taught will be a major feature of the session.

The career function is open to Year 12 and 13 students who have not yet decided what they would like to do in life, but feel that a tertiary education is an important next step. Parents are also invited to attend.

Please register at the Careers Office

### **SCHOLARSHIP APPLICATIONS OPEN**

Exciting news, our **scholarship application process is now open.** There is **\$25,000** available with multiple levels of scholarship on offer.

The theme for 2016 is 'Tell Us Your Story'. We want to hear all about YOUR (the student's) journey and why you are motivated to study Airline, Travel or Tourism at ITC.

Below are some questions you might want to answer in your application.

- Why do you want to study at ITC?
- How will winning this scholarship impact your life?
- Tell us about your passion for travel and tourism?
- What is your proudest accomplishment?
- What are your aspirations and dreams?
- What motivates you to work hard?
- If you could travel anywhere tomorrow, where would it be?

Please follow this link for further information <http://www.itc.co.nz/about-us/scholarships/>

To help your student with this application process we have also posted some examples of previous applications. It is important to note that we are not testing their cinematography or design skills, we are more interested in their story. How the student presents their story is entirely up to them.

These scholarships are open to all students wishing to study at either or Botany or City campuses in Auckland and for our Study From Home students throughout New Zealand.

If you or your students need some support with this process, please do not hesitate to contact me. We will soon be sending you some flyers regarding the scholarships for you to place around your school.

### **UNIVERSITY OF AUCKLAND SCHOLARSHIPS & AWARDS**

Scholarships and Awards for entry level/first-year students are now available on the Auckland University Website. Please note Applications close 5pm 25<sup>th</sup> August 2015.

### **UNIVERSITY OF CANTERBURY SCHOLARSHIP**

Fund your studies at Canterbury University [www.canterbury.ac.nz/scholarships](http://www.canterbury.ac.nz/scholarships)

### **BRIGHT START SCHOLARSHIP**

Pays full tuition fees for the first year of full-time study at the University of Canterbury.

Scholarships are available for domestic students who:

- Have the ability to succeed at their chosen course of study
- Are likely to experience financial problems or personal hardships in tertiary study.

Application forms and further details are available from the UC scholarships website at:

[www.canterbury.ac.nz/scholarshipsearch](http://www.canterbury.ac.nz/scholarshipsearch)

Applications close: 5pm, 15 August 2015

### **WE SEE MERIT. UC SCHOLARSHIP**

An unlimited number of Undergraduate Entrance Scholarships are available for those who get Merit or Excellence endorsements in NCEA Level 3 (or equivalent) in a New Zealand school in 2014/15. The cash scholarships range from \$1000 to \$6000

There are also Dux Scholarships, UC Emerging Leaders' Scholarships and many more on offer.

To find out more visit [www.canterbury.ac.nz/scholarships](http://www.canterbury.ac.nz/scholarships) or phone 0800 VARSITY (0800 827 748)

### **UC EMERGING LEADERS' SCHOLARSHIP**

In 2016, the University of Canterbury is offering over 100 Scholarships for All –Round Excellence, Head Boy/ Head Girl, Maori, Pasifika and outstanding sport achievement. Selection criteria include academic Achievement, leadership potential and involvement in sport, cultural and/or community activities.

Applications close: 5pm, 15 August 2015

### **UC FOUNDATION SPORTS SCHOLARSHIP**

This Scholarship supports students who have demonstrated strong academic achievement and potential for high levels of performance in sports.

Applications close: 5pm, 15 August 2015



## Hillary Outdoor 6 Hour Adventure Race. Congratulations to JPC Team, finish 7<sup>th</sup> out of 21 schools (168 students).

Stage One: Activities' started with finding locations around Government Gardens that offered up clues that had to be solved before you could continue to next stage. Stage Two: Consisted of a MTB navigation (20 – 30kms) around Whakarewarewa Forest. Once this task was completed it was onto Stage 3: Rogaine by foot (15 – 20kms), with bonus challenges for teams.

### What is Rogaine?

A sport devised by ROD, GAIL, and NEIL Phillips. Hence the name ROGAINE.

Rogaining is the sport of long distance cross-country navigation in which teams visit as many checkpoints as possible in the time allotted to the event. Usually teams travel entirely on foot, navigating by map and compass between checkpoints in terrain that varies from open farmland to steep hilly bush clad country-side. (Each checkpoint has a value.)

The top schools train hard for this event, team members do Cross Country and Mountain biking events for preparation. Also compete at various other events, just for this.

Points:

Taradale HS: 978. Francis Douglas / Sacred Heart: 956. Takapuna Grammar: 891. Trident HS: 806. Cambridge HS: 802. Westlake Boys & Girls No1: 743. JPC: 688. Westlake Boys & Girls No2: 583.

## GREAT FOREST ROGAINE, WHAKAREWAREWA FOREST, 25TH JULY 2015

**6 Hour Foot Rogaine** Saturday, 25th July 2015 First start 10:00am

**6 Hour MTB Rogaine** Saturday, 25th July 2015 First start 10:00am

**3 Hour Foot Rogaine** Saturday, 25th July 2015 First start 01:00pm

**3 Hour MTB Rogaine** Saturday, 25th July 2015 First start 01:00pm



Enter online by 22<sup>nd</sup> July: <http://www.obop.org.nz>

This is a great family event, and lot of FUN.

John Paul College students keen to do adventure racing and compete just enter online.

Any queries contact Mr Faulkner: [arthur.faulkner@jpc.school.nz](mailto:arthur.faulkner@jpc.school.nz)



**Is your child safe in the water?** Improve their confidence, fitness and develop super smooth swimming skills. **Swim Rotorua (Winner of a Westpac Rotorua Business Excellence Award) is a non-profit swimming club with qualified coaches and our Head Coach is one of the top swimming coaches in NZ.**

If you can swim 25 metres in freestyle and backstroke join us in term 3. We offer a free assessment and two weeks free coaching. We also offer sessions for water polo skills, tri-athletes and adults.

Contact: Pauline [swimrotoruaadmin@gmail.com](mailto:swimrotoruaadmin@gmail.com) or 02102280591.

<http://www.rotorua.swimming.org.nz/>

## SPIRIT OF ADVENTURE ALLOCATIONS

John Paul College has been allocated three voyager berths for 2016. Senior students who are interested please pop in and see Mrs Dobson in IT1 as soon as possible as these fill quickly. For all information see the Spirit website <http://www.spiritofadventure.org.nz/schools>.

Our berth allocations are:

Wellington to Tauranga 7-16 March Female Berth - It is the first time we have been offered a berth on this voyage so a real opportunity to see some NZ coastline.

Tauranga to Auckland 17-26 March Female Berth - *My daughter sailed this route and said it was a wonderful experience sailing in rubber duckies onto Hot Water Beach from a three masted sailing ship - the tourists soaking thought they were pirates!!*

Auckland / Auckland 14-23 June Male Berth - this is a wonderful opportunity to sail through Auckland Harbour up to the Chelsea Sugar Works, land on Kawau Island and sail across the top of the Coromandel Peninsula.

**REACH 900+ EMAIL ADDRESSES ON OUR DATABASE**

Contact [sue.rowles@jpc.school.nz](mailto:sue.rowles@jpc.school.nz) in the first instance, then an invoice will be issued by the JPC PTA.

**PLUGZ 4 LUGZ**

**Grade 5 custom made hearing protection**

**MADE ON THE SPOT**

**Comfortable\* Reusable\* Reliable\* Waterproof**

*Work, Play, Sleep and Swim*

In your very own Grade 5 earplugs

**Grant Rowles, Rotorua**

(07) 348 0908 / or 027 275 6848

[www.earmold.com.au](http://www.earmold.com.au) for more info

**"Hear today, gone tomorrow without adequate hearing protection"**



Is your property showing winter stress  
how about having us give it a spruce up  
you know a cleanup, prune hedges & trees,  
gardening, gutters, spraying and more  
we could even mow the lawn

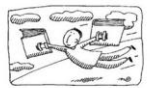
**NEED IT DONE –  
JIM'S THE ONE**



3494568

[www.jimsmowing.co.nz](http://www.jimsmowing.co.nz)

**Breathe...new...life  
Into your writing**



BMS helps equip writers with the  
confidence to complete stories  
and books – family histories a  
speciality.

Contact: MS at BMS Ltd  
[ms@bms.co.nz](mailto:ms@bms.co.nz) or (07) 349 4107

**ADVERTISE YOUR BUSINESS**

**HERE FOR**

**\$5 PER WEEK**

**NO ACC SURCHARGE ON XRAYS**

- CT • MRI
- Screening and Vascular Ultrasound
- General Musculoskeletal
- Intervention Procedures and Echocardiography
- All Maternity Ultrasounds
- Ultrasound Guided Biopsies
- Ultrasounds
- (Immigration CXRs)



**ACC/Private and  
Insurance Funded**

We are also pleased to be the first to offer 4D scanning in the  
Rotorua area.

*Bringing patient care and imaging technology together*  
X-rays – No appointment necessary.

For all other services call us to make an appointment.

**Central Health 1181, Crnr Amohia & Haupapa  
Streets Ph 07 343 7468**

[www.mokoiaradiology.co.nz](http://www.mokoiaradiology.co.nz)

**ADVERTISE YOUR BUSINESS**

**HERE FOR**

**\$5 PER WEEK**

**ADVERTISE YOUR BUSINESS**

**HERE FOR**

**\$5 PER WEEK**



**PLEASE SUPPORT OUR ADVERTISING SPONSORS**

**20% CASHBACK**

For new or replacment  
life insurance policies. For details  
and to see examples of how much  
cashback you could get, visit my  
dedicated webpage

[perrybell.co.nz/cashback](http://perrybell.co.nz/cashback)



**General Medical Services**  
**Immunisations**  
**Medical Examinations**  
**Long Term Condition**  
**Management**

### **Rotorua Medical Group**

Central Health and Fairy Springs Medical Centre

**"NEW PATIENTS WELCOME"**

1 Practice + 2 Sites = Convenient Health Care 4 U

Both sites open Mon-Fri, 8.00am to 5.00pm

Telephone: 347 0000 Email: [admin.rmg@rgpg.co.nz](mailto:admin.rmg@rgpg.co.nz) [www.rotoruamedical.co.nz](http://www.rotoruamedical.co.nz)

Our comprehensive and excellent family health care services include a

**Drop In Clinic – no appointment necessary**

**Central Health**, 1181 Amohia Street (next door to Central Pharmacy)

*Mon to Fri between 9.00am and 11.00am and 2.00pm and 4.00pm*

**Fairy Springs Medical Centre**, 10-100 Fairy Springs Road, Rotorua

*Mon to Fri between 9.00am and 11.00am*

# Need a Holiday?

Holidays restore what everyday  
life steals from you...it's true!

Harvey World Travel Rotorua is proud  
to support the Students, Families and  
Teachers at JPC. Contact us now for  
all your Leisure, Corporate and Group  
travel requirements. 100% locally  
owned and operated.

Harvey World Travel Rotorua  
1235 Tutanekai St, 07 349 4130  
[Rotorua@harveyworld.co.nz](mailto:Rotorua@harveyworld.co.nz)



**HARVEY  
WORLD TRAVEL**

THE TRAVEL PROFESSIONALS™