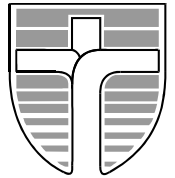




# John Paul College, Rotorua

Whitworth Road, Rotorua. [www.jpc.co.nz](http://www.jpc.co.nz) Ph: 07 3478 795 Fx: 07 3461 271  
A WEEKLY NEWSLETTER FOR THE JOHN PAUL COLLEGE COMMUNITY  
Term 3, Issue 23 27<sup>th</sup> July 2015



*Ma te pono Me te aroha – Through Faith and Love*  
2015 School Theme : 'Per Ardua Ad Astra – Through Adversity To The Stars'

Dear Parents/ Caregivers

Kia Ora, Malo e Lelei, Talofa, Greetings.

## PRELIMINARY EXAMS (YEARS 11-13): AUGUST 19<sup>th</sup> – 28<sup>th</sup>

The last set of exams for seniors before they leave early in Term 4 for their external NCEA exams will take place in weeks 5 and 6.

It is essential students have a study timetable and follow it. Extra support is available to students from teachers, Deans and Mr John Hepi, our Academic Counsellor, to ensure students are on track to achieve NCEA. If you have any concerns about their academic progress, please contact the above people.

## 15 WEEKS TO EXTERNAL NCEA EXAMS

It is important to note that there are only 15 school weeks to external NCEA exams, early in Term Four. The exams begin 9<sup>th</sup> November (6<sup>th</sup> November for NCEA Scholarship).

I have advised seniors this is very much the business end of the academic school year and they need to be focussed on a study timetable, completing assignments and the syllabus.

## NCEA FEES ARE NOW DUE

These must be paid at the accounts office by end of August. Please make contact with Julie Boyce on 3478 795 xtn 8859 or [Julie.boyce@jpc.school.nz](mailto:Julie.boyce@jpc.school.nz) if you have any queries.

## ENROLMENTS FOR 2016 HAVE NOW CLOSED

Enrolment interviews are now underway. Regrettably we have far more applications than available spaces and all applications from this time will be placed on our waiting list.

**If you have a child intending to leave** this year, please advise us as soon as possible, as understandably we will have some anxious parents and students on our waiting list.

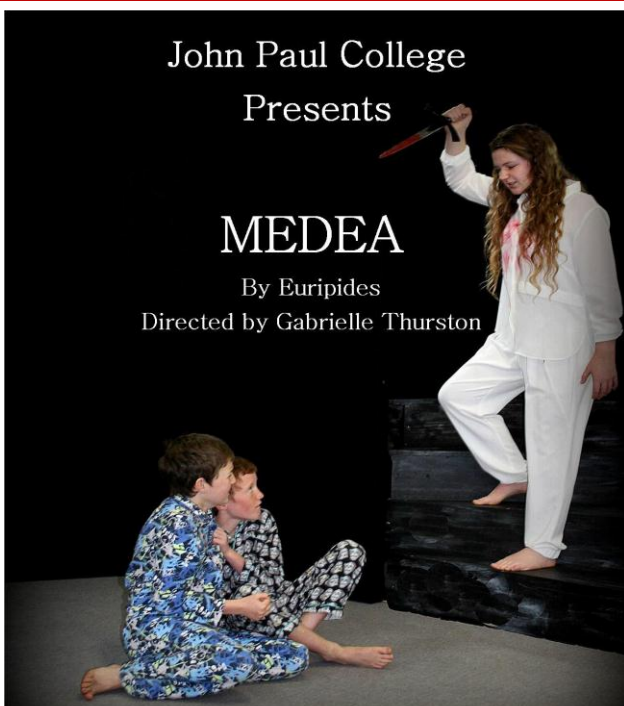
God bless

Patrick Walsh - Principal

John Paul College  
Presents

## MEDEA

By Euripides  
Directed by Gabrielle Thurston



THREE PERFORMANCES ONLY

31st July – 1st August 2015

Casa Blanca

Tickets John Paul College

## MEDEA

### A JPC PLAY NOT TO BE MISSED

The senior Drama students at John Paul College have prepared an outstanding production of Medea, which is thought provoking and inspiring.

It is exceptionally well priced and a wonderful Drama.

Please come along and support our senior Drama students.

## MEDEA

Three performances only

31<sup>st</sup> July- 7.30pm

1<sup>st</sup> August – 2.00pm & 7.30pm

at Casa Blanca

Tickets available at JPC

Adults: \$15 Students: \$10

## CALENDAR OF EVENTS TERM 3

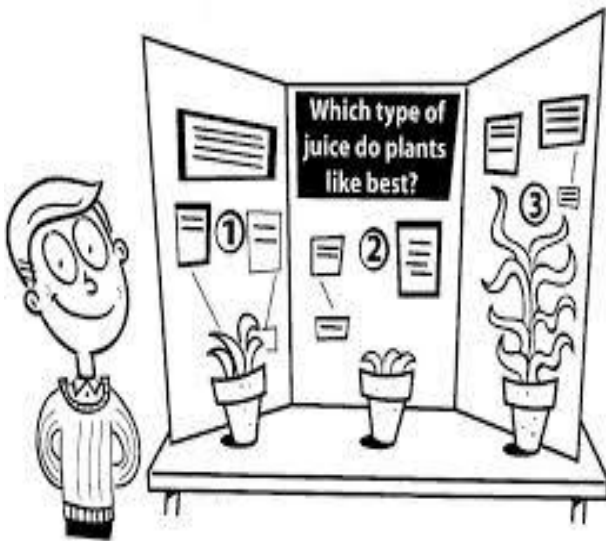
### July

- 27<sup>th</sup> – 5<sup>th</sup> Aug 2016 Enrolment Interviews  
31<sup>st</sup> – 2<sup>nd</sup> Aug National Gymsports Akld  
27-29<sup>th</sup> Year 12 Retreats  
27-31<sup>st</sup> Speech Exams  
28<sup>th</sup> ICAS English  
28-30<sup>th</sup> JPC Science Fair  
30<sup>th</sup> Australian Maths Comp

### August

- 3<sup>rd</sup>-5<sup>th</sup> RE Senior Assessment Week – BF  
3<sup>rd</sup>-7<sup>th</sup> Year 10 Careers Interviews  
4<sup>th</sup>-5<sup>th</sup> Year 12 ABL Camp  
4<sup>th</sup> Yr 9/10 Get 2 Go Challenge –FA  
5<sup>th</sup> BOP Badminton Juniors Comp – CT  
6<sup>th</sup> Senior B/Ball Champs – FA  
Yr 10 – Reserve Bank Talk – HS  
7<sup>th</sup> Yrs 7/8 – Badminton CT  
7<sup>th</sup> Yrs 7/8– Dio Regeneration Retreat-BF  
11<sup>th</sup> BOP Rugby 7s – Y7/8 FA  
ICAS Mathematics  
12<sup>th</sup> BOP Badminton Snrs – CT  
13<sup>th</sup> Y11-13 Drama Trip Akld –  
14<sup>th</sup> Dance Trip Taupo  
17<sup>th</sup> Maori Careers Talk – HS  
18-20<sup>th</sup> Year 10 Retreat – St Marys Church  
ICAS Mathematics  
MathsMind – 6-8pm  
19-28<sup>th</sup> Yr11-13 Prelim Exams  
21-22<sup>nd</sup> Chanel Shield – Gisborne  
21<sup>st</sup> Year 9 Parish Mass  
27<sup>th</sup> BOP Science Fair  
28<sup>th</sup> Daffodil Day

## SCIENCE FAIR PROJECTS



Will be on display Wednesday 29th July  
From 6.00 - 7.30pm in the McKillop hall.

## THE UNIFORM SHOP IS OPEN

**MONDAY, WEDNESDAY, FRIDAY**  
**8.00a.m to 4.00p.m Term time only**  
**CLOSED 11.30-12.30**

*Please note that Postie Plus stock no  
JPC uniforms*

## WORLD YOUTH DAY FUNDRAISING HANGI SATURDAY AUGUST 29<sup>th</sup>

**\$12 MEAL**  
**PICK UP FROM ST MICHAEL  
CHURCH CRYPT  
LAKE RD AT 12 NOON**

Tickets available from St Mary's church office  
pH 3480289 ext 2 or Pete Petelo, 0211088925  
or Atia Vulu 0223546274

**Menu: chicken, pork, mutton, mixed veg,  
pumpkin, potatoes and stuffing.**

Great for lunch after Saturday sports.  
**Please support us.**

## VIEW YOUR CHILD'S PROGRESS THROUGH THE JPC PARENT PORTAL

The Parent Portal of our student management system, Kamar, is open to enable you to view:

- the daily notices,
  - the student's timetable,
  - the school calendar,
  - the student's attendance,
  - academic results,
- and other information related to your child.

Any questions please email  
[maree.stewart@jpc.school.nz](mailto:maree.stewart@jpc.school.nz)



Kia ora koutou,  
**Whanau Support Group  
hui** is Monday 3 August  
5.30pm to 7pm in the whare,  
we will be following up on  
the actions from the last hui  
and planning for the rest of  
the year.

Shared kai at 7pm to 7.30pm, hope to see you  
there, na Eugene.

## KIA ORA TATOU FROM THE COUNSELLORS

Week 2 already and the holidays are fast fading into a distant memory. We hope you all enjoyed the break with your young people.

Parents of students who attend counselling sometimes have questions around confidentiality within counselling, so I thought it might be helpful to address this within this column.

As Counsellors we adhere to the NZAC Code of Ethics. In a nutshell, the confidentiality clause directs us to treat all communication within counselling as confidential, with the limits of confidentiality being reached when there is a concern for the safety of the client or others.

It is important though, to put this in the context of counselling within a school. We are very conscious of the responsibility we hold in our work to support our students through supporting their connections with others, and particularly with parents/caregivers. Often when students come to us with a problem it is because something has gotten in the way of the close relationship they usually enjoy with their parents and whanau. We work hard to find out what is getting in the way of peaceful times at home, with the intention of putting your child and you on the same team in standing against this problem and in support of family connection.

This might mean helping them find the words to start a conversation at home about what is troubling them. If this is too hard for them we will offer to phone home to let you know what's going on, or we can encourage your child to allow us to invite you to come in to school for a talk together. While the decision rests ultimately with the child, we do our utmost to be influential in strengthening the parent/child relationship.

To this end, we also welcome your calls or emails when you have a concern for your child. Often, parents don't wish their child to know that they have been in touch and we are more than happy to work around this.

When young people seek out counselling it is not because they are "closer" to us in any way, it is because they are NOT "closer" to us. Our objectivity and non-emotional link with our students enables them to speak without the worry of causing upset, something that often gets in the way of them talking in the first instance with you, their parents, whom they love dearly.

Na mihi nui kia koe,

Nancy Macmillan Extn 8854 [nancy.macmillan@jpc.school.nz](mailto:nancy.macmillan@jpc.school.nz)

Neil Carter Extn 8808 [neil.carter@jpc.school.nz](mailto:neil.carter@jpc.school.nz)

## SQUASH SUCCESS

**Congratulations to Renee Dudson** who competed recently in the North Island aged group Squash championships. Renee has a C2 grading which is very impressive considering she is only a Year 8 student.

Renee came runner-up in the Under 13 age group. A fantastic achievement! **Well done Renee!**

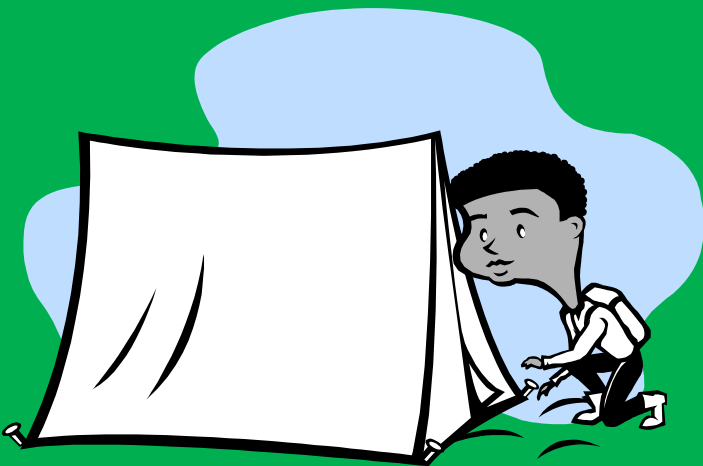
**Congratulations to Connor Broughton**, who has not only achieved their NCEA Level 3 but from the work that completed this year has had their NCEA Level 3 achieved with an Excellence endorsement. *Well done Connor.*

It is also pleasing to know that there are a number of other students in Year 13 who are close to achieving this success as well.

**Mr Peter Sinclair**

*D.P Curriculum*

E: [peter.sinclair@jpc.school.nz](mailto:peter.sinclair@jpc.school.nz)



## Year 8 Camp Information Evening

4<sup>th</sup> August @ 5.15pm

In the school library

### **THE ROTARY NATIONAL SCIENCE & TECHNOLOGY FORUM**

Applications are now being sought from high achieving Year 12 Science & Mathematics students for the Rotary National Science & Technology Forum to be held in Auckland 9 - 23 January 2016.

The Forum is designed to encourage top school performers to enter careers in Science and Technology. It is aimed at outstanding students from all over New Zealand and is focused on Excellence.

One of the underlying goals is to grow Science & Technology graduates for New Zealand's future prosperity. It is expected that the students of the Forum will be among the future leaders of Science & Technology in New Zealand.

High academic performance is not the sole criterion. Today's society demands that high achieving persons be well rounded persons able to communicate easily and recognise the place of the arts and recreation in a modern society. Excellence as individuals and all round ability are the keynotes to selection.

Students seeking selection for the Forum:

1. Must be Year 12 students intending to return to school in Year 13 in the year of the Forum with a guideline age of between 16.3 and 17.6 on 1<sup>st</sup> January 2016.
2. Must possess a very good academic record with standards achieved at excellence level in the Sciences and Mathematics
3. Should:
  - a. Be intending a career in the Sciences and/or Technology
  - b. Have good communication skills and good, all round general knowledge
  - c. Have a well-balanced personality and good interpersonal skills
  - d. If not NZ citizens, must hold permanent residency.

Application forms can be obtained from Ms Ludascher (HoF Science).

**THE YEAR 8 SPEECH COMPETITION** was held on Wednesday July 1 in the Edmond Rice Centre.

The judge, Maree Kinder, said the finalists were of a high standard. She was looking for a speech that connected well with the audience and the speaker needed to project his/her voice and to know his/her speech well. Ms Kinder has a passion for speech making and is a toast mistress here in Rotorua.

The finalists were Billy Forest, Scott James, Orla Walsh, Adam Wong-Toi, Sophie Huang, Joshua Rowe, Mitchell Jones, Tarquin Mc Kenzie, Vedansh Singh, Sethi Weerasekara

Placings

1 <sup>st</sup>	Orla Walsh	Topic: Dame Whina Cooper
2 <sup>nd</sup>	Adam Wong Toi	Topic: Fred Hollows
3 <sup>rd</sup>	Scott James	Topic: Thomas Edison

All speeches were at a high level. The judge really enjoyed the wide variety of topics and styles.



**KEEP  
CALM**  
And come to the  
**PTA  
QUIZ NIGHT**

**FRIDAY 11<sup>th</sup> SEPTEMBER**

In the Edmund Rice Centre

From

6pm for Silent Auction

Drinks and nibbles

Quiz starts at 7pm

**Major 2015 Fundraiser for Co-curriculum equipment for the students**

Teams of 6 – 8 people  
(Parents, Neighbours, Friends and Senior  
Students Welcome)

**\$10 per person**

**Bring Money \$\$\$ for a**

**Cash Bar**



**& Quick Fire Raffles**



*The PTA will provide water & nibbles on the tables*

**Dress up is Compulsory!** - Come dressed in your Team's Theme

*There will be a prize for the team voted best dressed*

There will be a **Silent Auction** packed with outstanding items that have been kindly donated by our local Business Community. This is **YOUR** chance to secure some fabulous products and services at amazing prices while supporting the students of JPC!

Be in to **WIN**

Prizes

Quick Fire Raffles

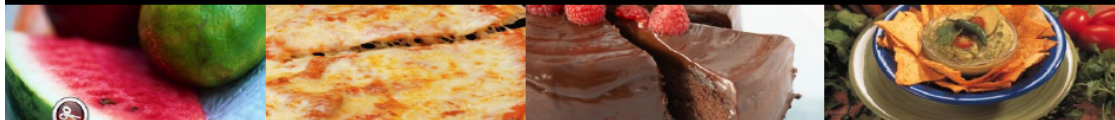
& .....

Bragging Rights as Quiz Winner!



**Challenge Others, Support your School, Come and Meet your School Community**

**Bring a Plate for a Shared Supper!**



Donations for prizes are now being sought for this fun-filled, major fundraiser.

All proceeds go towards student co-curriculum equipment

Should you, someone or business you know wish to donate and be advertised in the school newsletter for your generosity, please make contact with Liz Lock, Principal's P.A,

at [liz.lock@jpc.school.nz](mailto:liz.lock@jpc.school.nz)

# FAREWELL CONCERT

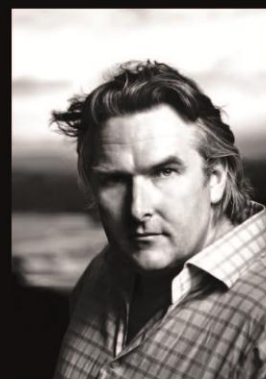
## Christian Thurston

Special Guest  
**Simon  
O'Neill**

*International Opera Sensation*



-Photo Oliver Rosser



-Photo Fraser Harding

*with*

**Richard Greager**  
**Chelsea Dolman**  
**Madison Nonoa**

*accompanied by*

**Mark Dorrell**

**CIVIC THEATRE  
ROTORUA**

**SUNDAY 23 AUGUST 2015 2.00 PM**

**\$30 plus booking fee - Tickets at TICKETMASTER**



-Photo Philip Merry

# *Fundraiser*

# CAR SEAT COVERS

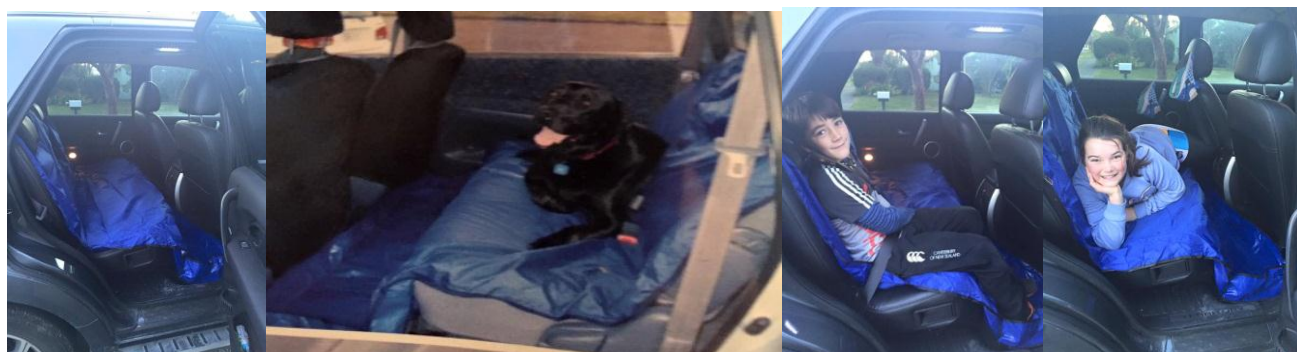


I am Sophie Gallon and I am selling car seat covers to fundraise for my trip to Cancun, Mexico in October to compete in the World Wakeboarding Championships this is a once in a lifetime opportunity and I need to fundraise because it will be expensive.

The car seat cover fits in all cars the photos of it are in mum's territory and smaller sedan, the Nylon fabric does not rip and you just have to cut where the seatbelts go. The elastic holds it up around the head rests.

When you don't need it, it folds in to its own pocket for easy storage in the car until next time. I have been kindly donated these to sell, \$20 each and \$15 goes towards my training and flights. I think you all need 1 or maybe 2!!

They are proving popular with my brother Jack's ruby team! Anyone interested please let my mum know on 0272497041 Or Email: [prue@pruemcquirelaw.co.nz](mailto:prue@pruemcquirelaw.co.nz)



## **Netball Rotorua Centre Draw for Saturday 1st August 2015**

### **Collegiate Schools 2015**

**09.30am**

Venue	Grade	Team 1	Team 2
Ct 02	Pool 7	WHHS Yr 9A	v JPC Coll Yr 10 a
Ct 06	Pool 6	JPC Coll Yr 10 B	v RIN Taonga
Ct 10	Pool 8	RGHS Jn Blue	v JPC Coll Yr 9 Red
Ct 12	Pool 10	JPC Coll Yr 9 Black	v RGHS JnrYellow

### **Intermediate Schools 2015**

**9:30:00 AM**

Venue	Grade	Team 1	Team 2
Ct 05	Pool D1	JPC Int Yr 8 A	v Mokoia Y8 Gold
Ct 14	Pool D2	JPC Int Yr 7 Red	v Rot Int Yr 8 Tautoko
Ct 19	Pool D4	Mokoia Yr 7 White	v JPC Int Y7 Black

**10:45am**

Venue	Grade	Team 1	Team 2
Ct 05	Pool E3	JPC Int Yr 8 B	v Rot Int Y7 Kahurangi
Ct 08	Pool E4	JPC Int Y 7 White	v Rot Int Y 7 Kaha

Once the games are completed on 1<sup>st</sup> August we will be playing cross overs finals for the trophies in the 8<sup>th</sup> and 15<sup>th</sup> August. Following your games on the 15<sup>th</sup> will be your prize giving. We will send you the finals format when we complete the draws for the final series.

## **FROM THE CAREERS OFFICE LAW CAREER EVENT**

Will be held at Rotorua Boys' High School on **Monday 10 August, from 2.00pm - 3.00pm.**

The structure of the Otago law degree and the career opportunities the degree offers will be explained. These career opportunities are not limited to legal practice but range widely from business, through Government departments to working for international organisations. Practical examples of how the law is taught will be a major feature of the session.

The career function is open to Year 12 and 13 students who have not yet decided what they would like to do in life, but feel that a tertiary education is an important next step. Parents are also invited to attend.

Please register at the Careers Office

### **SCHOLARSHIP APPLICATIONS OPEN**

Exciting news, our **scholarship application process is now open.** There is **\$25,000** available with multiple levels of scholarship on offer.

The theme for 2016 is 'Tell Us Your Story'. We want to hear all about YOUR (the student's) journey and why you are motivated to study Airline, Travel or Tourism at ITC.

Below are some questions you might want to answer in your application.

- Why do you want to study at ITC?
- How will winning this scholarship impact your life?
- Tell us about your passion for travel and tourism?
- What is your proudest accomplishment?
- What are your aspirations and dreams?
- What motivates you to work hard?
- If you could travel anywhere tomorrow, where would it be?

Please follow this link for further information <http://www.itc.co.nz/about-us/scholarships/>

To help your student with this application process we have also posted some examples of previous applications. It is important to note that we are not testing their cinematography or design skills, we are more interested in their story. How the student presents their story is entirely up to them.

These scholarships are open to all students wishing to study at either or Botany or City campuses in Auckland and for our Study From Home students throughout New Zealand.

If you or your students need some support with this process, please do not hesitate to contact me. We will soon be sending you some flyers regarding the scholarships for you to place around your school.

### **UNIVERSITY OF AUCKLAND SCHOLARSHIPS & AWARDS**

Scholarships and Awards for entry level/first-year students are now available on the Auckland University Website. Please note Applications close 5pm 25<sup>th</sup> August 2015.

### **UNIVERSITY OF CANTERBURY SCHOLARSHIP**

Fund your studies at Canterbury University [www.canterbury.ac.nz/scholarships](http://www.canterbury.ac.nz/scholarships)

#### **BRIGHT START SCHOLARSHIP**

Pays full tuition fees for the first year of full-time study at the University of Canterbury.

Scholarships are available for domestic students who:

- Have the ability to succeed at their chosen course of study
- Are likely to experience financial problems or personal hardships in tertiary study.

Application forms and further details are available from the UC scholarships website at:

[www.canterbury.ac.nz/scholarshipsearch](http://www.canterbury.ac.nz/scholarshipsearch)

Applications close: 5pm, 15 August 2015

#### **WE SEE MERIT. UC SCHOLARSHIP**

An unlimited number of Undergraduate Entrance Scholarships are available for those who get Merit or Excellence endorsements in NCEA Level 3 (or equivalent) in a New Zealand school in 2014/15. The cash scholarships range from \$1000 to \$6000

There are also Dux Scholarships, UC Emerging Leaders' Scholarships and many more on offer.

To find out more visit [www.canterbury.ac.nz/scholarships](http://www.canterbury.ac.nz/scholarships) or phone 0800 VARSITY (0800 827 748)

#### **UC EMERGING LEADERS' SCHOLARSHIP**

In 2016, the University of Canterbury is offering over 100 Scholarships for All –Round Excellence, Head Boy/ Head Girl, Maori, Pasifika and outstanding sport achievement. Selection criteria include academic Achievement, leadership potential and involvement in sport, cultural and/or community activities.

Applications close: 5pm, 15 August 2015

#### **UC FOUNDATION SPORTS SCHOLARSHIP**

This Scholarship supports students who have demonstrated strong academic achievement and potential for high levels of performance in sports.

Applications close: 5pm, 15 August 2015





## Parenting courses starting in Rotorua

**Build a great family team.**

**Join a Toolbox parenting group in your region and discover new ideas and strategies to add to your parenting kete.**

### **Tweens and Teens (12 to 18)**

Stand for Children Village      Wednesday 12 August      7.30 pm

### **Building Awesome Whānau (0-12)**

Harvest Centre      Wednesday 12 August      9.30 am  
Harvest Centre      Wednesday 12 August      7.00 pm



**\$75 per person, \$110 per couple for each six week course. Subsidies available.**

Free to foster carers, whānau caregivers, adopters, Grandparents Raising Grandchildren, and Home for Life Parents thanks to government funding

### **Dee Horne**

The Parenting Place Coordinator Rotorua

**The Parenting Place | Family is Everything | 07 345 5447 | 027 6139067**

### **SPIRIT OF ADVENTURE ALLOCATIONS**

John Paul College has been allocated three voyager berths for 2016. Senior students who are interested please pop in and see Mrs Dobson in IT1 as soon as possible as these fill quickly.

For all information see the Spirit website  
<http://www.spiritofadventure.org.nz/schools>.

Our berth allocations are:

Wellington to Tauranga 7-16 March Female Berth - It is the first time we have been offered a berth on this voyage so a real opportunity to see some NZ coastline.

Tauranga to Auckland 17-26 March Female Berth - *My daughter sailed this route and said it was a wonderful experience sailing in rubber duckies onto Hot Water Beach from a three masted sailing ship - the tourists soaking thought they were pirates!!*

Auckland / Auckland 14-23 June Male Berth - this is a wonderful opportunity to sail through Auckland Harbour up to the Chelsea Sugar Works, land on Kawau Island and sail across the top of the Coromandel Peninsula.



**FROM THE SPORTS DESK**

This Term we have 2 big sporting events.



New Zealand  
Secondary Schools  
Sports Council

NZSSSC Winter Secondary Schools 2015 Sports Week: 29<sup>th</sup> Sept – 6<sup>th</sup> August.

This event is held at various venues thru out both North and South Islands for all NZ Secondary Schools.

JPC has teams travelling away to Football, Hockey, Basketball and Netball. Only exception is Gym Sports which is 31<sup>st</sup> July – 2<sup>nd</sup> August



Nearly 8000 intermediate-aged athletes will descend on Tauranga in September as the NZCT AIMS GAMES continues its remarkable record-breaking run.



The 12th year of the games will feature one new sport – sailing – and had attracted 248 schools from around New Zealand when entries closed last week. That’s up from the 215 schools entered at the same stage last year, with late entries expected to bolster that tally further.

The tournament has grown every single year since it started in 2004

The 2015 tournament will be held from **September 6-11**, at a range of venues around Tauranga. Among the 7845 athletes already entered are 1152 netballers, 636 rugby players, 644 cross country runners and 768 basketballers. Sailing’s debut has also attracted strong interest, with 64 yachties lining up for the Anchor-sponsored on-water event.

JPC will be sending year 7 & 8 students to compete in, Cross Country, Football, Golf, GymSport, Hockey 6 aside, Netball, Rugby 7’s Boys and Girls, Squash, Swimming and Water Polo.

A big thank you in advance to all the parents that are involve with Coaching, managing, officiating and transporting our students to NZSSSC Winter Games and AIMS Games.



**Thank You!!!**

**PLAY HARD, PLAY FAIR, HAVE FUN**

## ENDING ABUSE FROM THE SIDELINES

Posted at 8:35am Monday 20 Jul, 2015 | By Luke Balvert [luke@thesun.co.nz](mailto:luke@thesun.co.nz)

**Big-mouthed parents shouting profanities or players physically taking on the referee on the field – most would cringe at the thought, but the cold hard truth is sideline abuse and altercations are evident in Kiwi sports.**

**The topic has the nation's tongues wagging following a spate of bad behaviour at sports matches throughout the country.**



*Sport BOP school sport team leader Gareth Yates urges parents and athletes to refrain from engaging in sideline abuse and aggressive on-field behaviour. Photo: Tracy Hardy.*

Incidents include an 11-year-old boy allegedly tackling a referee to the ground in Papatoetoe and Judea Rugby Club's Stacey Walker receiving a nine-month ban following an incident involving both players and spectators, which was sparked by him threatening a referee for red-carding him.

To dig deeper into the issue, SunLive spoke with Sport BOP school sport team leader Gareth Yates about efforts to stamp out this over-the-top behaviour.

*"Unfortunately sports are sports, and people get quite competitive and carried away with things," says Gareth. "One thing will lead to another and you never know what will happen. "It comes down to the values that a specific sport has or has been driven through the school, the coach or a particular leader."*

At a secondary school level, the sporting body closely aligns itself with the New Zealand Secondary Schools Sports Council and the Bay of Plenty Principals' Association – ensuring all events are sanctioned and run to a tee.

The more traditional sports of rugby, football and netball are run through regional sporting organisations with their own codes of conduct, in terms of what happens in and around sport.

These are strategies in place that Gareth confidently reports have handed the Bay a "good track record", strengthened by a strong collegial feel across the region – Central, Western and Eastern Bay of Plenty.

In years to come it is hoped a sideline behaviour strategy will be implemented by Sport New Zealand and adopted by regional sporting organisations, such as Sport BOP.

Until then, however, it's a bit of a "grey area" for most sports where attention must be paid to aligning with schools for the safety of children and people on the sideline, says Gareth.

*"We are trying to embed these positive values in the sport," he adds, "**but it has to be driven by their parents as well.** It's all about participation and offering pathways".*

*"At the end of the day, if you don't have that positive influence from home it's not going to flow on to the kids.*

*"So the parents lead a lot of decisions as to what the kids do on court or on the field of play.*

*"You'll notice the parents that are yelling are usually with the students that are doing the most damage aggressively."*

*Earlier this month, Sport New Zealand chief executive Peter Miskimmin reminded parents and other supporters to be mindful of their behaviour.*

*Peter says there's simply no place for any sort of abuse or violence, particularly in children's sport.*

*"Playing Saturday morning sport is a rite of passage for most Kiwi kids and it should be a positive experience for them," explains Peter.*

*"It's unacceptable that some adults are hi-jacking that, by abusing and attacking players, officials and the opposition.*

*"Everyone involved in sport has a responsibility to ensure that the experience – from the playground to top level sport – is a positive one for all involved.*

*"Sport makes a huge positive contribution to New Zealand and New Zealanders, and incidents like these undermine that.*

*"They could turn young people off sport and that would be extremely sad, because sport should enrich their lives."*

**REACH 900+ EMAIL ADDRESSES ON OUR DATABASE**

Contact [sue.rowles@jpc.school.nz](mailto:sue.rowles@jpc.school.nz) in the first instance, then an invoice will be issued by the JPC PTA.

## PLUGZ 4 LUGZ

**Grade 5 custom made hearing protection**

**MADE ON THE SPOT**

**Comfortable\* Reusable\* Reliable\* Waterproof**

*Work, Play, Sleep and Swim*

In your very own Grade 5 earplugs

**Grant Rowles, Rotorua**

(07) 348 0908 / or 027 275 6848

[www.earmold.com.au](http://www.earmold.com.au) for more info

**"Hear today, gone tomorrow without adequate hearing protection"**



**Speedy Signs**  
grow your business faster  
www.speedysigns.co.nz

Your Complete Branding Solutions Partner

1198 Arawa Street Ph: 349 1000 E: rotorua@speedysigns.co.nz

**EmbroidMe**  
www.embroidme.co.nz

Is your property showing winter stress  
how about having us give it a spruce up  
you know a cleanup, prune hedges & trees,  
gardening, gutters, spraying and more  
we could even mow the lawn

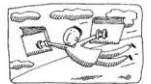
**NEED IT DONE –  
JIM'S THE ONE**



3494568

[www.jimsmowing.co.nz](http://www.jimsmowing.co.nz)

## Breathe...new...life Into your writing



BMS helps equip writers with the confidence to complete stories and books – family histories a speciality.

Contact: MS at BMS Ltd  
[ms@bms.co.nz](mailto:ms@bms.co.nz) or (07) 349 4107

**ADVERTISE YOUR BUSINESS**

**HERE FOR**

**\$5 PER WEEK**

## NO ACC SURCHARGE ON XRAYS

- CT • MRI
- Screening and Vascular Ultrasound
- General Musculoskeletal
- Intervention Procedures and Echocardiography
- All Maternity Ultrasounds
- Ultrasound Guided Biopsies
- Ultrasounds
- (Immigration CXRs)

**Mokoia  
Radiology**

**ACC/Private and  
Insurance Funded**

We are also pleased to be the first to offer 4D scanning in the Rotorua area.

*Bringing patient care and imaging technology together*  
X-rays – No appointment necessary.

For all other services call us to make an appointment.

**Central Health 1181, Crnr Amohia & Haupapa  
Streets Ph 07 343 7468**

[www.mokoiaradiology.co.nz](http://www.mokoiaradiology.co.nz)

**ADVERTISE YOUR BUSINESS**

**HERE FOR**

**\$5 PER WEEK**

**ADVERTISE YOUR BUSINESS**

**HERE FOR**

**\$5 PER WEEK**

**PLEASE SUPPORT OUR ADVERTISING SPONSORS**

**20% CASHBACK**

For new or replacment  
life insurance policies. For details  
and to see examples of how much  
cashback you could get, visit my  
dedicated webpage

[perrybell.co.nz/cashback](http://perrybell.co.nz/cashback)



**General Medical Services**  
**Immunisations**  
**Medical Examinations**  
**Long Term Condition**  
**Management**

### **Rotorua Medical Group**

Central Health and Fairy Springs Medical Centre

**"NEW PATIENTS WELCOME"**

**1 Practice + 2 Sites = Convenient Health Care 4 U**

Both sites open Mon-Fri, 8.00am to 5.00pm

Telephone: 347 0000 Email: [admin.rmg@rgpg.co.nz](mailto:admin.rmg@rgpg.co.nz) [www.rotoruamedical.co.nz](http://www.rotoruamedical.co.nz)

Our comprehensive and excellent family health care services include a

**Drop In Clinic – no appointment necessary**

**Central Health**, 1181 Amohia Street (next door to Central Pharmacy)

*Mon to Fri between 9.00am and 11.00am and 2.00pm and 4.00pm*

**Fairy Springs Medical Centre**, 10-100 Fairy Springs Road, Rotorua

*Mon to Fri between 9.00am and 11.00am*

# Need a Holiday?

Holidays restore what everyday  
life steals from you...it's true!

Harvey World Travel Rotorua is proud  
to support the Students, Families and  
Teachers at JPC. Contact us now for  
all your Leisure, Corporate and Group  
travel requirements. 100% locally  
owned and operated.

Harvey World Travel Rotorua  
1235 Tutanekai St, 07 349 4130  
[Rotorua@harveyworld.co.nz](mailto:Rotorua@harveyworld.co.nz)



**HARVEY  
WORLD TRAVEL**

THE TRAVEL PROFESSIONALS™