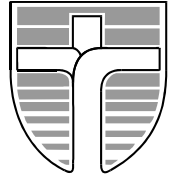




# John Paul College, Rotorua

Whitworth Road, Rotorua. [www.jpc.co.nz](http://www.jpc.co.nz) Ph: 07 3478 795 Fx: 07 3461 271  
A WEEKLY NEWSLETTER FOR THE JOHN PAUL COLLEGE COMMUNITY  
Term 4, Issue 35 2<sup>nd</sup> November 2015



*Ma te pono Me te aroha – Through Faith and Love*

*2015 School Theme : ‘Per Ardua Ad Astra – Through Adversity To The Stars’*

Dear Parents/ Caregivers

Kia Ora, Malo e Lelei, Talofa, Greetings

## SENIOR'S LAST WEEK

It is that time of the year where we celebrate the academic and extra-curricular achievements of our students. Parents play an important role in the success of our students. We would be delighted if you could participate in any of their occasions listed below, which will be held in the Edmund Rice Centre..

- **Tuesday 3<sup>rd</sup> Co-curricular prizegiving 1p.m**
- **Thursday 5<sup>th</sup> Leavers Mass 10.30a.m at St Mary's Church - *parents are most welcome to attend.***  
**Students are required to be at school at 8.30a.m**
- **Thursday 5<sup>th</sup> Senior Prizegiving 7 p.m.**
- **Friday 6<sup>th</sup> NCEA Scholarship exams commence**
- **Monday 9<sup>th</sup> NCEA exams commence**



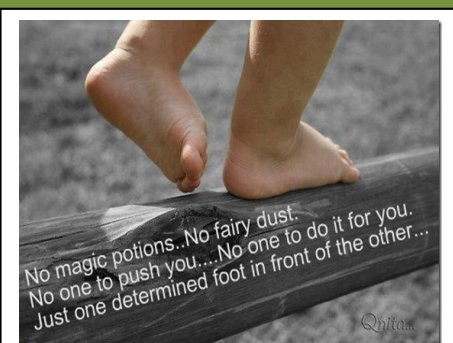
**As your children begin NCEA exams** please ensure the following:-

- They get a good night's sleep
- They have breakfast and lunch
- They check the night before whether it is a morning or afternoon exam
- They have their exam number with them
- They arrive at least 20 minutes before the exam
- They have all the necessary equipment e.g. calculators, plenty of pens etc
- Once the exam is over don't dwell on it, you can't change the result, focus on the next one

***Above all, please be encouraging and supportive of your children at this stressful time. It will end!***

God bless

Patrick Walsh - Principal



To all our  
departing  
seniors



## WHANAU SUPPORT GROUP HUI TONIGHT 5.30pm to 7pm In the Whare



This will be a combined hui with the whanau groups from St Michaels and St Marys, with a view to forming closer ties with our primary schools.

In addition we will review our years activities and plan towards 2016, all whanau are welcome and we share kai from 7pm to 7.30pm.

In 2016 we are working towards regular school Maori Mass on Wednesdays and senior students taking a speaking role in the Monthly Maori mass at St Michaels. Nga mihi, Eugene - Chairperson

## November

- 3<sup>rd</sup> Snr Co-curricular Prizegiving
- 5<sup>th</sup> Leaver's Mass 10.30am St Marys Church
- 5<sup>th</sup> Snr Prizegiving
- 6<sup>th</sup> Jnr BoP Tennis Champs
- NCEA Scholarship Exams commence
- 9<sup>th</sup> NCEA Exams commence
- Junior Exams commence
- 12<sup>th</sup> Year 10 Youth Summit
- 16<sup>th</sup>-30<sup>th</sup> Life Ed
- 16<sup>th</sup> Year 8 Camp Week
- Orientation Week 2016 Year 7s
- 23<sup>rd</sup>- 30<sup>th</sup> Year 10 Activity Week
- 24<sup>th</sup> Year 9 Activity Day
- 26-29<sup>th</sup> NISS Water Polo Juniors



## December

- 1<sup>st</sup> Years 7 & 8 CoCurricular Prizegiving
  - 3<sup>rd</sup> Years 9 & 10 CoCurricular Prizegiving
  - 4<sup>th</sup> NCEA/Scholarship Exams finish
  - 4<sup>th</sup> Junior Prizegiving
  - Junior Reports Issued
- School closes for 2015 at 12.05pm**



## A MESSAGE FROM THE JPC PTA

A BIG thank you from the PTA for the support of our recent annual Quiz Night. It was a great night with everyone making a great effort to dress up.

We raised \$6500 over the evening which included the Silent Auction. We wish to thank all our sponsors listed below and hope you will support them like they supported us.

We have the **Work Choice Day** coming up on Friday November 13<sup>th</sup>. Thank you for supporting this fundraiser. We aim to return all the funds raised to the students in the next year.

**Mrs A Colby – PTA Chair**



## THE UNIFORM SHOP IS OPEN

**MONDAY, WEDNESDAY, FRIDAY  
8.00a.m to 4.00p.m Term time only  
CLOSED 11.30-12.30**

**Please note that Postie Plus stock no  
JPC uniforms**



Find us on  
**Facebook**

## PTA 2<sup>nd</sup> HAND UNIFORMS

We gratefully accept any second hand uniforms for resale. Please bring any unwanted, 'grown-out-of' uniforms to the main reception. *Thank you in anticipation.*

## FROM THE P.E DEPARTMENT YEAR 7 BEACH EDUCATION

The dates and days for our Year 7 classes to travel to the Omanu Surf Life Saving Club for the above programme are:

**Thursday 26th Nov, 7WJ and 7SK**

**Friday 27th Nov, 7CV and 7JS**

**Monday 30th Nov, 7SJ and 7CG**

The information has been distributed and is required to be returned asap. **We are reliant** on parents/caregivers to provide assistance on the day with transport and adult supervisors of our students.

Ms B Northey

E: [barb.northey@jpc.school.nz](mailto:barb.northey@jpc.school.nz)

## YR 8 WAITOMO CAMP PARENT HELPERS MEETING TOMORROW 3<sup>rd</sup> November

**In the Religious Studies Centre at 6pm.**

Thank you to those parents who have volunteered to come along to the Yr8 Waitomo camp, or help with transport to and from camp.

We will be having a parent helpers camp meeting to discuss camp duties and responsibilities, transport times and arrangements, pre-cooking help, tent/cabin arrangements and any other relevant items you wish to discuss. We look forward to seeing you all there then,

**Mrs K Bloomfield**

E: [Karen.bloomfield@jpc.school.nz](mailto:Karen.bloomfield@jpc.school.nz)

*Teacher in Charge*

# PLEASE SUPPORT OUR QUIZ NIGHT SPONSORS

<b>Maxtrix Resources Ltd</b> Psychometric Assessment Value at \$977.50	<b>Kylie's Beauty Clinic</b> Classical Facial value at \$69	<b>Novotel</b> Accommodation & Breakfast Value at \$220
<b>Riverjet</b> The Squeeze & Riverjet 5 X Voucher value at \$159each	<b>River Rats</b> 2 hours Kayak hire value at \$30	<b>Atticus Finch Restaurant</b> Sponsor: <b>MaisyPlaceCarpainters</b> 2 Dinner voucher value \$100each
<b>Rotorua Canopy Tour</b> 2 Adults Pass value at \$278	<b>Te Puia Te Po Experience</b> 2 Adult Passes value at \$230	<b>Mountain Jade</b> Jade Pendant value at \$138
<b>Millennium Hotel</b> 1 hr Relaxation Massage Value at \$110	<b>Millenium Hotel</b> Bar Tab at Zazu Bar Value at \$50	<b>Lake Okareka Horse Tracking</b> 1 ½ hr ride for 2 persons Buy 1 Get 1 Free, \$80 off
<b>Polynesian Spa</b> Family Spa Voucher at \$39	<b>Mitai Cultural Experience</b> Family Pass value at \$315	<b>Lakeland Queen</b> 1 hour Lunch Cruise 2 X Adult Voucher value at \$100
<b>Kelly Tarltons Auckland</b> Family Pass value at \$110	<b>Palmers</b> Large Painting on Canvas Value at \$199	<b>Tamaki Maori Village</b> Cultural Experience 2A at \$220
<b>Stevens</b> Photo Frame value at \$70	<b>Jaycar Rotorua</b> Stereo Headphone value \$50	<b>Tree House Daycare</b> Picnic Café Vouchers 2 Vouchers at \$50 each
<b>Waitotapu Thermal Park</b> 3 X Family Pass value \$80each	<b>Absolute Dental</b> Exam, Scale & Polish \$195	<b>Agroventure</b> 2 X Rides from Swoop, Shweeb & Jet value at \$79
<b>Volcanic Air Safaris</b> Airport Transfer for 3persons 2 X Transfer @ \$90 each	<b>Bay of Plenty Steamers</b> Sponsors Shirt Value to be confirmed	<b>The Chiefs Ltd</b> <b>Donated 2 X Chiefs Pack</b>
<b>Hobbiton Movie Set</b> 2 Adult Passes value at \$150	<b>Hobbiton Movie Set</b> 2 Adult Passes value at \$150	<b>Speedy Sign</b> Graphic Package value at \$300
<b>Princes Gate Hotel</b> 2 X High Tea Vouchers Value at \$56	<b>Caci Clinic</b> 3 X Microdermabrasion Value @ \$140 each	<b>Passion Hair Beauty Body</b> Hair Products value at \$60
<b>River Rats</b> Kaituna Grade 5 value at \$105	<b>Tamaki Maori Village</b> Cultural Experience 2A at \$220	<b>Palmers</b> Large Painting on Canvas (please call to sight)Value at \$199
<b>De Flute Glass</b> Ornamental Display Glass Value at	<b>Communications Networks</b> Samsung Galaxy Core Prime Mobile Phone value at \$250	<b>Communications Networks</b> Sunbeam Electric NonStick Fry Pan value at \$150



## BOARD GAMES WANTED!

If you have unused, superfluous board games at home, please donate them to Mrs Sarich-Dunn in C4. I want to start up a board game club for lunchtimes. Scrabble, Yahtze, Trivial Pursuit, Scattergories, Draughts, Chess, Cranium, Jenga... anything. Thank you.

Mrs M Sarich-Dunn E: [Natasha.sarich-dunn@ipc.school.nz](mailto:Natasha.sarich-dunn@ipc.school.nz)



Identify and collect from the student counter  
Unclaimed property will go to the PTA for resale

**Applications for 2016 Rotorua Lakes Youth Council** are now open. The Youth Council is a group of 13-18 year old who provide a youth perspective to the RD Council. As part of the Youth Council you will learn about how Council operates, be part of cool events and meet new people. If you are interested, grab a form from the student counter or complete online at [rotoruyouthcouncil.weebly.com](http://rotoruyouthcouncil.weebly.com). Applications close on 16th November. If you have any questions see Matt, Daham, Te Rina, Te Mahara or Kesia

### 2016 1ST XV RUGBY

There will be a meeting at 5.45pm on Wednesday 4th November at the CT Club, Moncur Drive for all parents and players that are going to be involved with 1st XV Rugby next season.

There will be discussion about the pending Australian trip (Year 11 - 13) and how (fundraising) to make it eventuate. There are other promising developments and we need parental support. Please ensure that you are there to hear what is happening!

*Richard Haigh*

### RESULTS FROM CBOP YEAR 7 & 8 TENNIS CHAMPIONSHIPS

Championship winner Boys Singles: Logan Nathan

3<sup>rd</sup> : Matthew Veitch

Championship winners Boys Doubles: Logan Nathan and Christopher Harris

2<sup>nd</sup> : Matthew Veitch and Angus Veitch

Plate Girls Singles winner: Hannah Gapes

Championship Girls Doubles 2nd place: Hannah Gapes and Molly Sinclair



**TOP SCHOOL YEARS 7 & 8 2015 – John Paul College**

### EXAMINATION TIMETABLE YEARS 7-10

Level and Time		Monday (D6) 9 <sup>th</sup> November	Tuesday (D7) 10 <sup>th</sup> November	Wednesday (D8) 11 <sup>th</sup> November
Year 7	P1 & 2	Religious Studies	Science	Mathematics
	P 4 & 5	English	Social Studies	
Year 8	P1 & 2	Science	Religious Studies	Social Studies
	P 4 & 5	Mathematics	English	
Year 9	P1 & 2	Social Studies	Science	English
	P 4 & 5	Religious Studies	Mathematics	
Year 10	P1 & 2	English	Science	Social Studies
	P 4 & 5	Mathematics	Religious Studies	

Note:

- Year 7-10 Examinations will run Periods 1 and 2 and Periods 4 and 5.
- Classes will be allocated an examination room (see below).
- Supervisors will be, in most cases, their normal teachers for those periods and classes.
- Head of Faculties ensure that papers are placed in plenty of time on the table in the staffroom and instructions are clear.
- Rooms Changes and supervision relief will be given in the daily notices on each day.
- 10LJ students sitting NCEA examinations will be on examination leave on Monday 9<sup>th</sup> November, and Tuesday 10<sup>th</sup> November (am).

JPC has once again gained some outstanding results in the **NATIONAL YOUNG DESIGNERS AWARDS COMPETITION** through the Design and Arts College of NZ in Christchurch.

The winners in Fashion Design are:

Evening Wear—Senior	1st Felicity Cook
	2nd MacKenzie van Fulpen
High Street Fashion- Senior	1st Hannah Christensen
High Street Fashion--Junior	1st Emily Park
Handcrafts—Intermediate	1st Bonnie Simmonds
	2nd Equal--Denisa Berbece and Stephanie Carter
	3rd Skyla Jung

***Congratulations and well done to all winners***

### **JPC STUDENT TO ATTEND NATIONAL ROTARY SCIENCE & TECHNOLOGY FORUM**

**Congratulations to Kesia Kurian** who has been accepted to attend the National Rotary Science and Technology Forum with sponsorship from Rotary Rotorua Sunrise.

The 26th Rotary National Science & Technology Forum will be held in Auckland, 10<sup>th</sup> – 24<sup>th</sup> January 2015. This is a programme for OUTSTANDING all round science, maths and technology students in Year 12 who will be returning to Year 13 and are planning to study the sciences or technology at tertiary level. There are 180 places for students from across New Zealand to attend.

This fully residential programme is conducted by Rotary and the Tertiary Institutions of Auckland. By the end of the Forum students should have a better understanding of the tertiary courses they wish to follow and a fuller appreciation of the place of science and technology in the wider community. It also provides an opportunity for high achieving students to spend time with similar minded people and the experiences gained invariably result in overall personal growth and renewed motivation to succeed.

***Well done Kesia***

Dear Parents/Caregivers

### **Re: JOHN PAUL COLLEGE WORKDAY OUT – FRIDAY 13<sup>TH</sup> NOVEMBER**

The PTA of John Paul College has requested that years 7 – 10 have a Workday Out on Friday 13<sup>th</sup> November. This is a teacher only day. This was a very successful event last year, raising over \$12,000 for the PTA which has been used for the blazers, a water station, sun shades, concrete table tennis table, to name a few.

The essential features of the day include:

- Students choose a work experience for the day which could include home, neighbours or local businesses
- Students work for the day 9:00am – 3:00pm
- The students contribute a minimum of \$20.00 to the PTA
- The money will be put towards the technology building refurbishment
- It is not intended that the students simply have a 'day off' and you donate \$20.00 – students should learn to develop a strong work ethic and earn the money
- If you want your child to come to school they will be supervised
- Your child must either have a job and commit to the minimum of \$20.00 or come to school on that day

I hope that you will see the day as a positive initiative and support it.

Yours sincerely

Patrick Walsh

**Principal**

✂-----

I give permission for my child to participate in the Workday Out Yes / No

**If no-** my child will attend school on the day and be supervised

Signed ..... Date .....

Child's Name ..... Class .....



The New Zealand Women's U-20s side secured their berth at the FIFA Women's U-20 World Cup.

**Congratulations to PAIGE SATCHELL** (No 13) and her teammates off to another World Cup. Paige competed in the U-17 Women's World Cup last year.

During term break the U20 Women's team travelled to Tonga to play in the Oceania U-20 Women's Championship. Winning all their games and qualifying for FIFA Women's U-20 World Cup.

While there the entire squad and coach Leon Birnie made the trip out to Tailulu College, a school in Nuku'alofa with around 500 pupils. Players took part in games with the students, toured some of the classrooms and gave out gifts



**JPC Waka Ama success at Regional Secondary Schools Distance Champs.**

JPC had 3 crews at Te Puru, Thames, for this event with JPC Rua winning the under 16 girls 4km race paddling hard right to the end and JPC Tahī winning the under 16 girls 8km race.



JPC Tahī were behind coming into the last 100 metres but showed determination and intelligent decision making to put themselves into a position to capitalise on a Hamilton Girls High mistake and win the race by 0.1 second, incredible after 8 kms and nearly 40 minutes on the water. We also for the first time had an under 16 boys crew and this sets a strong foundation for 2016.

Thanks to all the parents who supported and **special thanks** to Candace Thornton and her Yr 9 Fabric technologies class for making paddle covers to protect the new school paddles, a great example of school support.



We will regroup Term 1 2016 for the National Secondary School champs in April at Lake Tikitapu. Mauriora!





# NCEA TUTORIALS MATHEMATICS

Students are advised to go to the student counter to find out the venue

## Level 1

Date	Time	Topic	Teacher
Thursday 5/11	13:20-14:00	Graphs	Mrs Botha
Thursday 5/11	13:00-15:00	ALL	Mrs Clapperton
Friday 6/11	13:20-14:00	Graphs/Probability	Mrs Botha
Friday 6/11	13:00-15:00	ALL	Mrs McLay

## Level 2

Date	Time	Topic	Level	Teacher
Friday 6/11	9:00-11:00	probability	ALL	Mrs Pingol
Friday 6/11	13:30-15:00	ALL	Merit/Excellence	Ms Cordonni
Monday 9/11	9:00-12:00	ALL	ALL	Mrs Pingol
Monday 9/11	19:00-20:30	ALL	Merit/Excellence	Ms Cordonni
Tuesday 10/11	9:00-11:00	ALL	ALL	Mrs Wright

## Level 3 Statistics

Date	Time	Topic	Teacher
Wednesday 11/11	9:00-10:30	ALL	Mrs McLay
Wednesday 11/11	11:00-13:00	Probability Distributions	Mrs Pingol
Monday 16/11	9:00-10:30	ALL	Mrs McLay
Monday 16/11	11:00-13:00	Statistical Reports	Mrs Pingol
Tuesday 17/11	9:00-10:30	Probability	Mrs McLay
Wednesday 18/11	9:00-10:30	Probability Distributions	Ms Cordonni
Wednesday 18/11	9:00-11:00	Statistical Reports	Mrs Pingol

## Level 3 Calculus

Date	Time	Topic	Teacher
Monday 23/11	9:00-10:30	Differentiation	Mrs Cordonni
Tuesday 24/11	13:00-14:30	Differentiation	Mrs Cordonni

## Scholarship Statistics

Date	Time	Teacher
Monday 9/11	9:00-10:30	Ms Cordonni
Tuesday 10/11	9:00-10:30	Ms Cordonni

## HOME STAY FAMILIES REQUIRED



We are looking for quality home stay's to host incoming International students.

The students come to JPC for six to twelve months, sometimes longer. We do have an extensive database but would like to increase it with more JPC families.

If this interests you and you would like more information please contact Jacqui at school on 347 8795 ext. 8863

## **SENIORS OUTSTANDING LIBRARY BOOKS**

**Please return by this Friday *Outstanding books will be invoiced***

YEAR LEVEL	STUDENT	BOOK OUTSTANDING
10	Eric Perez	Animal Farm / Nineteen Eighty-Four
	Sam Sewell	Drop Zone
	Rochelle Fladgate	End of the Alphabet
	Lachlan Kessels	Light
	Sophia Le Lievre	I Am Not Esther
	Jaydan Pollock	Deep Fried
	Pranil Theakkakara	City of Heavenly Fire – The Mortal / The Magic
	Cameron Butterworth	The Way It Was
11	Georgia Dent	The Mystery of Smugglers Cove
	Courtney Marjoirbanks	Awakening
	Brianna Richardson	Ender's Game
	Megan Auge	Lies
	Gus Dube	After
	Liam Franklin	The 9/11 Terror Attacks
	Kalia Hare-Kingi	A Dance With Dragons
	Sophia Blatchford	The Accident
	Nevay Douglas	I Am Not Esther
	Daniel Towers	Small Steps
12	Warrick Auge	Band of Brothers
	Hannah Duthie	Wild Women
	Kasey Martin	Before I Die
	Kasey Martin	You Against Me
	Jayleeca Nicholls-Tau	Dirty Liar
	Priya Patel	Public Speaking
	Olivia Philip	I Am The Cheese
		Pride and Prejudice
		Much Ado About Nothing
	Abigail Ward	The Bridge
	Danielle Cooper	James K Baxter A Portrait
Hannah Steens	The Power Of One	
13	Madeline Gordine	Looking for JJ
	Lily Short	The Lovely Bones
	Zoe Spence	Much Ado About Nothing
	Maria MacKinnon	Jasper Jones
	Nicole Acton	The Beach



<b>YEAR LEVEL</b>	<b>STUDENT</b>	<b>BOOK OUTSTANDING</b>
9	Liam Black	Unfed
	Shaylee Creighton	Assaddin's Creed – Unity
	Samuel Davies	The Dogs of Winter
	Brianna Lewis	City of Bones / Beautiful Malice
	Mason Whyte	Northwood / Jimmy Moran – Regular
	Samantha Irving	When We Wake
	Sophie O'Neill	Freaks Like Us
	Jared Paalvast	Divergent
	Hayden Punton	Assassin's Creed
	Aiden Swann	Deltora Quest
	Aiden Swann	Just Doomed
	Kate Bird	An Abundance of Katherines
		The Host / My Sister's Keeper
	Maddison Brown	The Great Gatsby
	Ernest Chan	The Power of Five
	Sahib Bajwa	Cujo
	Nicholas Briggs	Maximum Security
	Maxine Coatham	The Poison Throne
	Mickaela Franklin	The Princess Plot
	Thando Mabhena	Deltora Quest
	Shaun Magee	People's Republic
	Keane Milne	People's Republic
	Charles Playne-Milne	Fantastic Mr Fox
	Tiana Rerupe –Burke	Vampire Diaries The Hunters
	Crystal Yeoman	Mad Dogs
	Grant Baker	Brigands MC
	Keaton Barlow	Jameela / Geek Girl / Ballad
	Liam Benfell	All Quiet on the Western Front
	Brianna Clarricoats	Behind Enemy Lines
	Esha Dahya	The Very Bad Book
	Jade Davies	Magic Fire / Die Softly
	James Greentree	Sorrowline
	Seth Grouby	Justice League Unlimited
	Grace Hayes	The Silver Sword / The Lovely Bones
	Harrison Hill	Boy Soldier
	Alexis Maafu	A Feast for Crows / The Running Man
	Tyler Murray	Secret Army
	Logan Salmons	The Freeing of Nelson Mandela
	Danielle Sharland	Insurgent
	Oliver Smyth	The New Recruit / War Torn
Jessica Fenwick	Clockwork Prince / Clockwork Princess	
Krista Kurian	Noughts and Crosses	
Matthew Lindsay	Predator's Gold	
Anna Sinclair	The Host	

## Rotorua YR 5/6 & 7/8 Hockey Player Development Programme

**What** Coaching Sessions, 6 week Programme  
**Venue:** Smallbone Park  
**Date:** First Session: Monday 9 November  
Last Session: Monday 14 December  
**Time:** YR 5/6 – 3:30 – 4:30pm  
YR 7/8 – 4:30 – 5:30pm  
**Cost:** \$20 per player



This Development Programme aimed at all Year 5/6 & 7/8 players who wish to improve their hockey skills in order to take their hockey further or anyone who would like to give hockey a go!

This Programme is open to **ANYONE** in YR 5/6 and 7/8 and is not limited to current hockey players.

Registrations are to be made on the Coaching and Development page on the Rotorua Hockey website [www.rotoruahockey.co.nz](http://www.rotoruahockey.co.nz)

**Do you have a question?** Contact Franki Traini

CoachForce Hockey Officer

Email: [hockey@sportbop.co.nz](mailto:hockey@sportbop.co.nz)

Mobile: 027 230 3214



PATHWAYS  
KINDERGARTEN

### SPRING FAIR

Saturday 14 November 2015

10am-2pm

14 Larch Street, Rotorua

#### FAMILY FUN DAY

Cake Stall - Icecreams - Cafe Food - Games -  
Lucky Dips - Story Telling - Art & Craft Stall -  
Plant Stall - Music and Lots More!

EFTPOS AVAILABLE!

COME AND VISIT OUR UNIQUELY  
NATURAL KINDERGARTEN AND  
ENJOY THE FUN!

steiner education-nurturing children naturally



#### Parenting courses starting in Rotorua

Build a great family team. Join a Toolbox parenting group in your region and discover new ideas and strategies to add to your parenting kete.

#### Tweens and Teens (12 to 18)

St John's Church Thursday 12.30 pm

Dee Horne

The Parenting Place Coordinator Rotorua

The Parenting Place | Family is Everything | 07 345 5447 |  
027 6139067

## 2015 NCEA Examination Timetable

Day	Date/Time	Level 1	Level 2	Level 3	Scholarship	
Day 1	Fri 6 Nov	9.30am			Drama	
		2.00pm				
Weekend						
Day 2	Mon 9 Nov	9.30am	Mathematics		Te Reo Māori	
		2.00pm		English		
Day 3	Tues 10 Nov	9.30am	Science	Earth and Space Science	Making Music	Biology
		2.00pm		Mathematics		
Day 4	Wed 11 Nov	9.30am	Music			English
		2.00pm	Te Reo Māori	Home Economics	Chemistry	Samoan
Day 5	Thurs 12 Nov	9.30am	Geography	Te Reo Māori	Home Economics	Statistics
		2.00pm	Social Studies	Economics	English	
Canterbury Anniversary Day Weekend						
Day 6	Mon 16 Nov	9.30am	English	Biology	Health	Physics
		2.00pm		Media Studies	Music Studies	
Day 7	Tues 17 Nov	9.30am	Japanese	Physics	Classical Studies	
		2.00pm	Media Studies		Drama	Calculus
Day 8	Wed 18 Nov	9.30am	French	Dance	French	Media Studies
		2.00pm		Spanish	Economics	Spanish
Day 9	Thurs 19 Nov	9.30am	Physics	Samoan		Geography
		2.00pm	Health	French	Statistics	Te Reo Rangatira
Day 10	Fri 20 Nov	9.30am	Dance	History	Physics	French
		2.00pm	Biology	Accounting	History	
Weekend						
Day 11	Mon 23 Nov	9.30am		Chemistry	Te Reo Rangatira	Classical Studies
		2.00pm	Home Economics	Agricultural and Horticultural Science	Biology	Accounting
Day 12	Tues 24 Nov	9.30am	Chemistry	Classical Studies	Earth and Space Science	Music
		2.00pm	History		Business Studies	History
Day 13	Wed 25 Nov	9.30am	Drama	Japanese	Geography	
		2.00pm	Economics	Drama	Calculus	
Day 14	Thurs 26 Nov	9.30am		Geography	Japanese	Economics
		2.00pm	German	Latin	Art History	
Day 15	Fri 27 Nov	9.30am	Business Studies		Media Studies	Chemistry
		2.00pm		Art History	Chinese	Latin
Weekend						
Day 16	Mon 30 Nov	9.30am	Agricultural and Horticultural Science	Music	Agricultural and Horticultural Science	Chinese
		2.00pm	Chinese	Health	Accounting	Art History
Day 17	Tues 1 Dec	9.30am	Accounting		German	Japanese
		2.00pm	Classical Studies	Business Studies	Te Reo Māori	Earth and Space Science
Day 18	Wed 2 Dec	9.30am		Chinese	Spanish	
		2.00pm	Spanish	Education for Sustainability	Dance	Agricultural and Horticultural Science
Day 19	Thurs 3 Dec	9.30am	Samoan	Te Reo Rangatira		
		2.00pm	Te Reo Rangatira	Social Studies	Samoan	German
Day 20	Fri 4 Dec	9.30am	Latin		Social Studies	
		2.00pm	Art History	German	Latin	

## JPC Yr 7/8 ATHLETICS PROGRAMME

### Friday 6<sup>th</sup> November 2014

- Students listed as qualifiers are the only students out of class for the day
- Students are to report to morning form class to have their names checked off, then get changed quickly and assemble on the cricket turf
- 9.00am 200m Heats will be run first, followed by the first round of the Field events
- 10.45am 100m Heats

Students will need to bring PE gear, warm clothing to put on in between events, hat and sun lotion, food, water bottle

Time	High Jump BE/RN	Long Jump HT	Shot Put BM	Discus CW	Cricket Throw DA	Gumboot Throw NB	Track
9.15am	Yr 7 Girls	Yr 8 Girls	Yr 7 Boys	Yr 8 Boys	Yr 8 Boys		
10.00am	Yr 8 Boys	Yr 7 Boys	Yr 7 Girls	Yr 8 Girls	Yr 8 Girls	Yr 8 Boys	
11.15am	Yr 8 Girls	Yr 7 Girls	Yr 8 Boys	Yr 7 Boys	Yr 7 Girls	Yr 8 Girls	
12Noon	Yr 7 Boys	Yr 8 Boys	Yr 8 Girls	Yr 7 Girls	Yr 7 Boys	Yr 7 Boys And Yr 7 Girls	
1.20pm							200m Finals
1.30pm	<b>LUNCH</b>						
2.30pm							100m Finals

### FROM THE CAREERS OFFICE

For the first time the **NEW ZEALAND GEOTHERMAL WORKSHOP** will be holding a Geothermal Futures Evening for year 12 and 13 pupils from high schools in the surrounding area. This is a free event and focuses on options available for students wishing to pursue a career in the geothermal industry.

The format for the Geothermal Futures Evening is very student focused and includes short introductions from Rosalind Archer, Head of Department of Engineering Science and Director of the Geothermal Institute, Jo Douglas, Director Commercial Initiatives and Trudy Halloran, Assistant Business Development Manager, GNS, where they will provide information on what to study to help them achieve their goal.

There are also fun activities planned such as build your own seismograph and a game simulation on pipe building.

The event is sponsored by Wairakei Resort who will be providing refreshments for students and their parents. More information on this evening can be found on <http://www.geothermalworkshop.co.nz/registration-2/>

It would be great to see you there and please spread the word to friends, colleagues or even your own children!

There are three short courses available at the New Zealand Geothermal Workshop this year. They are filling fast!

You can register at the same time as you register for the Workshop. More specific detail can be found by clicking on the individual course.

#### **Pre workshop**

1 day Basics of Geothermal Technology runs on Tuesday, 17 November at the Wairakei Resort, Taupo

2 day Geophysical Tools runs on Monday, 16 November and Tuesday, 17 November at the Wairakei Resort, Taupo

#### **Post workshop**

3 day TOUGHREACT runs on Monday, 23 November, Tuesday, 24 November and Wednesday, 25 November at the University of Auckland

**REACH 900+ EMAIL ADDRESSES ON OUR DATABASE**

Contact [sue.rowles@jpc.school.nz](mailto:sue.rowles@jpc.school.nz) in the first instance, then an invoice will be issued by the JPC PTA.

**SQUEAKY CLEAN HOME CLEANING SERVICES**

- Affordable
- Reliable
- Honest
- Weekly or Fortnightly

*I do the jobs you don't want to!*



Ask about my Spring Clean Special  
**Current References  
 From Happy Clients**

Please phone Amanda on 021 023 90365



**Speedy Signs**  
 grow your business faster

[www.speedysigns.co.nz](http://www.speedysigns.co.nz)

**Your Complete Branding Solutions Partner**

1198 Arawa Street Ph: 349 1000 E: [rotorua@speedysigns.co.nz](mailto:rotorua@speedysigns.co.nz)



[www.embroidme.co.nz](http://www.embroidme.co.nz)

**NO ACC SURCHARGE ON XRAYS**

- CT • MRI
- Screening and Vascular Ultrasound
- General Musculoskeletal
- Intervention Procedures and Echocardiography
- All Maternity Ultrasounds
- Ultrasound Guided Biopsies
- Ultrasounds
- (Immigration CXRs)



**ACC/Private and  
 Insurance Funded**

We are also pleased to be the first to offer 4D scanning in the Rotorua area.

*Bringing patient care and imaging technology together*

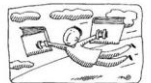
X-rays – No appointment necessary.

For all other services call us to make an appointment.

**Central Health 1181, Cnr Amohia & Haupapa  
 Streets Ph 07 343 7468**

[www.mokoiaradiology.co.nz](http://www.mokoiaradiology.co.nz)

**Breathe...new...life  
 Into your writing**



BMS helps equip writers with the confidence to complete stories and books – family histories a speciality.

Contact: MS at BMS Ltd  
[ms@bms.co.nz](mailto:ms@bms.co.nz) or (07) 349 4107

**ADVERTISE YOUR BUSINESS HERE  
 TO OVER 900 JPC FAMILIES**

**\$5 PER WEEK**

**INTRODUCTION TO TAI  
 CHI  
 6 WEEK COURSE ONLY  
 \$30**

Classes starting:  
 Tues: 20 Oct: 5.10 – 6.10pm  
 Thurs: 22 Oct: 6.00 – 7.00pm  
 Friday: 23 Oct: 9.00 – 10.00am  
 Saturday: 24 Oct: 9.00 – 10.00am  
 Tues: 27 Oct: 12.00 – 1.00pm  
 Wednesday: 28 Oct: 5.10 – 6.10pm

HEALTH. WELLBEING.  
 INJURY PREVENTION.  
 PEACE OF MIND.

Come experience a class in the friendly atmosphere of our volunteer, non-profit organization

**WHERE**  
 Taoist Tai Chi Rotorua  
 1227 Haupapa Str  
[www.taoist.org.nz](http://www.taoist.org.nz)  
 tel 07 349 4943  
 email [rotorua@taoist.org](mailto:rotorua@taoist.org)

BALANCE. POSTURE.  
 STRENGTH. FLEXIBILITY.  
 TRANQUILITY.



**For all your pharmacy needs**

**Opening Hours:**

**Monday, Wednesday, Friday  
 9a.m – 5.30p.m**

**Tuesday 9a.m – 6p.m**

**MARGOT DWIGHT**

*DipPharm MPS*

**Phone: 347 7668**

**PLEASE SUPPORT OUR ADVERTISING SPONSORS**

**20% CASHBACK**

For new or replacment  
life insurance policies. For details  
and to see examples of how much  
cashback you could get, visit my  
dedicated webpage

[perrybell.co.nz/cashback](http://perrybell.co.nz/cashback)



**General Medical Services**  
**Immunisations**  
**Medical Examinations**  
**Long Term Condition**  
**Management**

### **Rotorua Medical Group**

Central Health and Fairy Springs Medical Centre

**"NEW PATIENTS WELCOME"**

**1 Practice + 2 Sites = Convenient Health Care 4 U**

Both sites open Mon-Fri, 8.00am to 5.00pm

Telephone: 347 0000 Email: [admin.rmg@rgpg.co.nz](mailto:admin.rmg@rgpg.co.nz) [www.rotoruamedical.co.nz](http://www.rotoruamedical.co.nz)

Our comprehensive and excellent family health care services include a

**Drop In Clinic – no appointment necessary**

**Central Health**, 1181 Amohia Street (next door to Central Pharmacy)

*Mon to Fri between 9.00am and 11.00am and 2.00pm and 4.00pm*

**Fairy Springs Medical Centre**, 10-100 Fairy Springs Road, Rotorua

*Mon to Fri between 9.00am and 11.00am*

# Need a Holiday?

Holidays restore what everyday  
life steals from you...it's true!

Harvey World Travel Rotorua is proud to support the Students, Families and Teachers at JPC. Contact us now for all your Leisure, Corporate and Group travel requirements. 100% locally owned and operated.

Harvey World Travel Rotorua  
1235 Tutanekai St, 07 349 4130  
[Rotorua@harveyworld.co.nz](mailto:Rotorua@harveyworld.co.nz)



**HARVEY  
WORLD TRAVEL**

THE TRAVEL PROFESSIONALS™