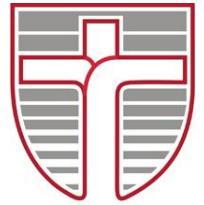




# John Paul College, Rotorua

Whitworth Road, Rotorua. [www.jpc.school.nz](http://www.jpc.school.nz) Ph: 07 3478 795 Fx: 07 3461 271  
A WEEKLY NEWSLETTER FOR THE JOHN PAUL COLLEGE COMMUNITY  
Term 3, Issue 31 19<sup>th</sup> September 2016



*Ma te pono Me te aroha – Through Faith and Love*  
2016 School Theme : *Success is not final, Failure is not fatal.*  
*It is the courage to continue that counts ~ Winston Churchill*

Dear Parents/ Caregivers  
Kia Ora, Malo e Lelei, Talofa, Greetings

## AIMS TOURNAMENT

A large number of our Year 7 and 8 students participated in the AIMS tournament held in Tauranga. We had some excellent results but more importantly for me, I received very positive feedback from parents and the public about our student's commitment to fair play, exemplary behaviour and pride in their school.

I extend my thanks to all parents who assisted with travel, coaching and organisation. Your assistance allows our students to excel.

## SCHOOL LEAVERS

If your son or daughter intends to leave JPC at the end of the year, the school needs to know as soon as possible, as we have students on the waiting list.

## WORK CHOICE DAY

As in previous years, please note Work Choice Day will take place on Friday November 11<sup>th</sup> for students in Years 7-10. Work Choice Day is to support our hardworking PTA. It is also a Teacher Only Day. If you have a job available for a student, please contact the School Office. Letters will be sent home early in Term 4.

## STUDY BREAK: YEARS 11-13

The next two weeks are critical for students in Years 11-13. It is essential that they take time for a good break over the holidays but equally, they should devote some time to:

- Complete all assignments and assessments
- Know how many credits they have gained and what needs to be achieved
- Put in place a study timetable
- Start reviewing previous exam papers
- Attend extra tutorials
- Preparing for external exams which commence Wednesday 9<sup>th</sup> November

## SPRING BREAK

With the worst of the winter weather behind us, may I take this opportunity to wish staff and students a restful break.

Term 4 promises to be an exciting and challenging Term.

God bless

Patrick Walsh

Principal



## BOARD OF TRUSTEES ELECTION 2016 DECLARATION OF STUDENT ELECTION RESULTS

Votes:

Isobel EGGERS 90

Oliver SCHWEIZER 165

Cullen SMITH 278

Skye WINTER 62

***I hereby declare Cullen Smith duly elected:***

Elizabeth Lock - Returning Officer

# DANCING WITH THE STAFF

## A GREAT NIGHT OF ENTERTAINMENT

THIS Wednesday 21<sup>st</sup> September 7pm

Tickets on sale now at the accounts office \$15 (or at the door on the night)

ADDITIONAL VOTING FORMS & PROGRAMMES FOR SALE

Raffles & refreshments will be on sale

*Proceeds will go to the LaSallian Foundation*



### UNIFORM SHOP

OPEN MONDAYS/WEDNESDAYS/FRIDAYS  
8a.m to 4.p.m  
CLOSED 11.30a.m-12.30p.m  
Mrs C Constable - Uniform Shop Manager  
E: [Carolyn.constable@jpc.school.nz](mailto:Carolyn.constable@jpc.school.nz)

*The Homework Centre is open to all students on Mondays & Wednesdays From 3.30-5.00pm Following (provided) afternoon tea Mrs M Stokes – Teacher in Charge E: [Margaret.stokes@jpc.school.nz](mailto:Margaret.stokes@jpc.school.nz)*

**Whanau Support**  
**After-School Homework for Maori/Pasifika students**  
Every Tuesday in the Library  
From 3.30pm to 5 pm.

### TABLE TENNIS BATS REQUIRED

John Paul College has an outdoor table tennis table. We are looking for table tennis bats. Do you have some at home that you never use? Please send them along to the school office. We would love to have them.

### BOARD GAME AND CHESS CLUB

Each Tuesday lunchtime in C4. Students are invited to 'come and eat your lunch' and play a variety of games - Risk, Monopoly, Chess, Cranium, Scrabble, Upwords, Trivial Pursuit etc.

*"We would gratefully receive donations of unwanted, unused board games"*

### Interested in becoming a Catholic?

You are invited to come and learn about the Catholic Faith at St. Mary's Catholic Church on the corner of Ranolf and Seddon Street at 7.00pm Wednesdays 21<sup>st</sup> September, 28<sup>th</sup> September and the 5<sup>th</sup> October.

### ENROLMENT FOR THE SACRAMENTAL PROGRAMME

At St Mary's Catholic Church 7.00 pm, the 12<sup>th</sup> October and or 19<sup>th</sup> October. There will be a briefing on the Sacramental Programme, dates will be given and fees of \$25.00 are required to be paid either by cheque or cash.

For the children who are not baptised in Rotorua, please bring a baptismal certificate. Children who are not baptised or would like to become Catholic are also very welcome to be a part of the sacramental programme.

For further enquires email Fr Eamon Kennedy.

[freamonkenedy@gmail.com](mailto:freamonkenedy@gmail.com)

### TERM 4 EVENTS

#### OCTOBER

11<sup>th</sup> Years 7 & 8 Regeneration Retreat  
17<sup>th</sup> Whanau Support Hui 5.30-7.30pm  
21<sup>st</sup> Diwali Festival  
27-28<sup>th</sup> Year 8 Aquatics Experience

#### NOVEMBER

1<sup>st</sup> Snr Co-curricular Prizegiving 1.00-3.00pm  
3<sup>rd</sup> Snr Prizegiving 7.00-10.00pm  
7-9<sup>th</sup> Junior Exams  
9<sup>th</sup> -2<sup>nd</sup> Dec NCEA/Scholarships exams  
15-25<sup>th</sup> Life Education  
21<sup>st</sup>-23<sup>rd</sup> Year 8 Camp  
24<sup>th</sup> Year 9 Amazing Journey  
25<sup>th</sup> Year 9 Careers Day  
28-30<sup>th</sup> Year 7 Beach Education  
28<sup>th</sup> -5<sup>th</sup> Dec Year 10 Activities

#### DECEMBER

6<sup>th</sup> Yr 7 & 8 Co-curricular Prizegiving 1-3.00pm  
8<sup>th</sup> Yr 9&10 Co-curricular Prizegiving 1-3.00pm  
9<sup>th</sup> Junior Prizegiving 10-12.00pm  
End of year reports issued



25<sup>th</sup>

September

Put your clocks forward 1 hour

### BYOD (Bring Your Own Devices)

Brochures are available at student counter

Orders must be in by 15 November  
I pads can have a screen smaller than 10 inches

Any inquiries to Maree Stewart

E: [maree.stewart@jpc.school.nz](mailto:maree.stewart@jpc.school.nz)

As the winter sports come to an end, can you please ensure all sport uniforms are laundered and returned BY THIS FRIDAY for stocktake; invoices will be issued. This includes ALL track suit tops loan for Winter Tournament and AIMs to be returned. (Squash, Girls Football, Boys Hockey). Thank you

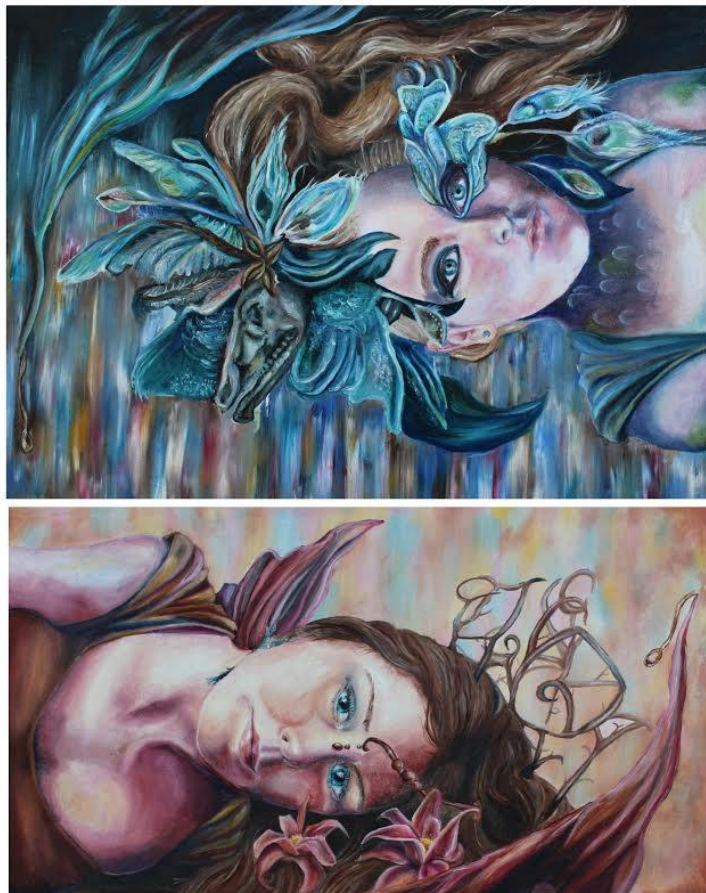
Arthur Faulkner – Sports Coordinator

E: [Arthur.faulkner@jpc.school.nz](mailto:Arthur.faulkner@jpc.school.nz)

## NEW ZEALAND SECONDARY SCHOOLS ART COMPETITION

Congratulations to Sarah Kolver who gained 1<sup>st</sup> place with her artwork, *Yin and Yang of the Spirit* at the NZ Secondary Schools Art Competition, with her theme piece **Confidence and Empowerment**

This Way Up



This diptych series explores the empowerment of the human spirit when it is released from the strict confines of society. It represents not only this liberation of the self, but also the duality of humanity, our ability to embrace the emotions we choose, having confidence in the knowledge that we as humans cannot be solely good or solely evil. The two portraits have been placed on their sides to depict how the reality we ourselves know may not be the true reality, but merely a reflection of what society wants us to see.

The backgrounds depict the blurring way in which our emotions blend and change throughout our lives, to create one whole, multiplexed personality.

This piece also explores the metaphor of the sky and the earth. This has been included to further the understanding that, just as the earth cannot be without the sky, our innate human goodness cannot be without evil.

We are empowered through knowing both sides of our souls, through accepting our darker side so we may move toward the light, and move forward with confidence knowing that perfection does not exist.



Our very best wishes went with our Top Chefs: Maddie Snell, Ella Campbell, Fisher Wang and Joshua France-Meeuws, who travelled to Christchurch as finalists in the Maggi Cook Off competition last week. Team "Top Chefs" competed in the grand final which will be broadcast on the Adam and Eve Show!

The judges were looking for creativity, originality, suitability and the nutritious nature of the recipe submitted. There is \$5,000 up for grabs for the grand final winning school, as well as \$250 for each grand final winning team member.

## SUMMER UNIFORM CHANGEOVER

Students are to start Term 4 in full summer uniform

The JPC Uniform Shop is open Mondays, Wednesdays & Fridays during term time

The Uniform Shop will be open during the School Holidays on Thursday 6th October and Friday 7th October, 8am – 4pm

**2<sup>nd</sup> HAND UNIFORM SALE**

Thursday 22<sup>nd</sup> SEPTEMBER at Mckillop Campus

3.30-4.30pm – Cash / Cheque only – no Eftpos

All donations of summer uniform for resale are gratefully received



## OCTOBER – OUTDOORS MONTH

Here at Sport BOP we have a variety of options to choose from for Outdoors Month in October. School holidays are just around the corner so why not come and give geo-teering ago, fun for the whole family. A quick explanation – a combination of geo caching, treasure hunting and orienteering where you hunt for markers using your mobile. The best advice I can give you is, to simply give it a go.

### Monday 3 October

Where: Lake Tikitapu  
Time: Come down anytime between 10.00am-11.30am  
Meet: Blue Lake Tarawera Road, opposite the Top 10 Holiday Park.

### Tuesday 4 October

Where: Puarenga Stream  
Time: Come down anytime between 10.00am – 11.30am  
Meet: Puarenga Stream, keep an eye out for the Sport BOP car, Waipa bypass road, near Planet Bike.

To register and for more information contact Verina Wihongi, Recreation Advisor, [verinaw@sportbop.co.nz](mailto:verinaw@sportbop.co.nz) or 07 348 4125 ext 610

---

## BOP HOLIDAY FUN FOOTBALL

The Holiday Fun Football programmes are for boys and girls of all abilities, aged 6 – 12 years old. Any questions please contact Juan Bautista Propato, email: [juan.p@waibop.co.nz](mailto:juan.p@waibop.co.nz)

Register [here](https://membership.sportstg.com/regofrm.cgi?formID=62476). <https://membership.sportstg.com/regofrm.cgi?formID=62476>

### Rotorua Holiday Fun Football

Where: Puarenga Park, Rotorua  
Date: Monday, Tuesday & Wednesday, 26, 27 & 28 September  
Time: 9am – 12.00pm  
Price: \$20 per player/per day

---

## ROTORUA CRICKET HOLIDAY PROGRAM

**When:** Tuesday 27th September 2016 - Friday 30th September 2016  
& Monday 3rd October 2016 - Friday 7th October 2016

**Time:** 8:30am – 3:30pm

**Cost:** \$30 per day per person

All Keen Cricketers are welcome aged 8 - 15 years. The Program is run by 2 local cricketers who both have their Level 1 Coaching Certificate. Please Bring along your packed lunch. Light Snacks will be provided. If you are interested please contact Karen Kyle (Cricket Coordinator) asap as spaces are limited email: [info@rotoruacricknet.co.nz](mailto:info@rotoruacricknet.co.nz) or phone 027 2479048

More information: <http://www.sportbop.co.nz/downloads/Cricket%20Holiday%20Program%20%202016.pdf>



## PUTARURU BUS STUDENTS

Dear Parents/Caregivers

Can you please notify me if your child will be returning / not returning to JPC next year, thereby confirming their seat on the Putaruru bus.

Kind regards

Sue Rowles

Enrolments Secretary

E: [sue.rowles@jpc.school.nz](mailto:sue.rowles@jpc.school.nz)

## Event reminder:

The University of Waikato is hosting two Applicant Days this year:

### Hamilton campus

Saturday, 17 September, 9am -2pm

[Programme](#)

### Windermere campus, Tauranga

Thursday, 29 September, 5.30pm - 8.30pm

[Programme](#)

This is an opportunity for your students and their parents to visit the campus, talk to Faculty staff and learn more about life as a student. For students who have not yet applied or who are in the process of applying there will be an opportunity to talk to an adviser, apply online and select the papers they wish to study.

There will also be talks on the day about the transition from school to university, what life is like as a student and the support the University has in place. We will also be running talks for parents to ensure they have all the information they need. For full details of the day and to register visit our [Applicant Day webpage](#).

### Catherine Downes

Associate Director, Future Students  
The University of Waikato



There are many unnamed items in the lost property. If they are not claimed before the end of term they will be donated to the JPC PTA 2<sup>nd</sup> Hand Sale or St Vincent de Paul

With the changeover to summer uniform, please name all items of clothing and property to ensure a quick return if lost and found!!

### ROTORUA SOCCER ACADEMY HOLIDAY PROGRAMME

Held at: Malfroy Primary School  
When: Monday 26<sup>th</sup> & Tuesday 27<sup>th</sup> Sept  
Time: 9.00am to 3.00pm  
Wet or fine

**Learn to play football or just improve your skills and have a great time.**

Cost: \$50 for both days or  
\$25 for one day

**Limited spaces available, book now**

Phone Jason on 021 1860 959 or  
Email: [WALKERSRULE@xtra.co.nz](mailto:WALKERSRULE@xtra.co.nz)

## WANTED

Old t-shirts, towels and sheets  
for the engineering and metalwork  
technology departments.

(Please, no jeans)

**Please note, there are extra costs associated with:**

**Year 8 Camp Term 4 2016** - Approx \$205

**Year 10 Activity Week Term 4 2016** - Approx \$260

**Year 13 Leadership Camp January 2017**

Approx \$220 - held first week, Term 1

**Years 12 Camp May 2017** – Approx \$220

### SECONDARY SCHOOLS NATIONAL SPORTS TOURNAMENT 1st XI GIRLS HOCKEY, CHICA GILMOUR TOURNAMENT

What a great week the girls had, topped off by a week of fine weather. The team headed over to Mount Maunganui 29<sup>th</sup> August – 2<sup>nd</sup> September.

We had a group of very excited and enthusiastic girls head away for a week of hockey! This year our team was young, 2 seventeen year old and the rest 15 year olds and so very young for a 1<sup>st</sup> XI hockey team. The team will only strengthen as the years go by!

JPC can be proud of the girls as it was noted by other schools and officials what great sportsmanship, attitude and fitness our team had. Well done team!

A special thanks goes to our coach, Oriwa Thyne-Fitzgerald (a past pupil of JPC) for dedicating the last four years to our girls 1<sup>st</sup> XI team; she is moving to Hamilton to join her fiancé. She has been an outstanding coach, dedicating many volunteer hours to our girls – again thank you Oriwa.

We look forward to a well-earned break over the summer, ready for next season 2017.

**Yvonne Piebenga**  
Team Manager

## BADMINTON RESULTS

Our top JPC boys badminton team competed for the first time at the National Badminton competition on the 30<sup>th</sup> August to the 1<sup>st</sup> September in Hamilton.

The boys; consisting of Chakrit Liamsuksri, Alex Coumbe, Edmond Chao, Joshua France-Meeuws and Sam Sewell had some tough competition and handled themselves well.

Day one saw them come away with a comprehensive win of 6 games to nil against Bethlehem College.

Day two saw some tough competition against St Peters College which the boys narrowly lost.



This continued throughout the rest of the tournament with some close wins and losses respectively. A big thanks goes to Lalar, Sue and Anna for taking the boys over to Hamilton and guiding them through the tournament. The boys should be extremely proud of the 13<sup>th</sup> place in New Zealand and 7<sup>th</sup> place in Division 2. For the first time at the National competition this is a very impressive result. Well done Boys.

## AFFIRMAIL TEAM ROTORUA

As a part of the Young Enterprise programme each team is tasked with developing a product and then marketing it in the public arena. Young Enterprise is a nationwide competition.

This year Eamon Walsh (CEO) James Nelson (Production manager), Kenta Yeoman (Financial Manager), Thomas Wirepa (Sales and Marketing direction), and Quinn Phelan (Communications Director) formed their start-up company called Affirmail.

The product that we have decided to manufacture and sell are beautifully branded postcards. These cards have been purposely designed for businesses, schools and organisations to use as a means of promotion or congratulations. They are fully customisable, and allow you to put your logo, name, details and any picture of your choice.

Currently many businesses and schools all over New Zealand are using our product. If you are an owner of a business, organisation or work at school and have any interest or questions about this product, please contact us on any of the following:

Email: [affirmail@gmail.com](mailto:affirmail@gmail.com)

Website: <http://affirmail.cms.cgdesign.co.nz/>

Mobile: 021 2636254

Like us on Facebook at Affirmail Team Rotorua

Thank you for your support,  
Affirmail Team Rotorua

Comprised of- Eamon Walsh, James Nelson, Kenta Yeoman, Thomas Wirepa and Quinn Phelan





## Kia ora tātou from the Counsellors

Following on from our last column about the teenage brain, today we share some information about teenagers and sleep. (*Acknowledgement again to Nathan Mikaere Wallis*).

As adults we have all probably noticed that teenagers often seem to want to stay up very late and sleep in all day. Neuroscience is able to shed some light on this and it's to do with hormones.

There are a lot of hormone changes going on for teenagers. One of the hormones we release, Melatonin, regulates our circadian rhythm. This is our wake and sleep cycle. In adults, the production of Melatonin is what keeps our sleep pattern regular. Teenagers, on the other hand, pretty much stop producing that hormone. What that means for the adolescent is that it doesn't really feel any different at 3 o'clock in the morning than it does at 3 o'clock in the afternoon.



As adults, we can gain an occasional insight into what that's like on those days when, at 2 o'clock in the morning, it only feels like 9 o'clock at night. Fortunately for most of us, this is random and irregular. For teenagers though, this is a constant state of reality. It can be helpful for us as adults, to understand teenage sleep patterns as a hormonal response rather than deliberate misbehaviour. Of course this is not to say that teens should be able to stay up all night! It is merely an acknowledgement that there is a neuroscientific reason for them often wanting to.

As adults we can be flexible about when we time important conversations and activities. If we are prepared to wait for times when we know our young people are at their most "cortical" (ie) calmest and most rational, we can enjoy a calmer response and closer connection. First thing in the morning is not usually that time!

Finally, just advance notice that the week beginning Monday 10<sup>th</sup> October (Week one of term four), is NZ Mental Health Awareness week. The theme this year is **Connect with nature for better mental health and well-being**. See this newsletter for details of an inter-school writing competition for years 7 and 8 and speech competitions for years 9 to 13 students. Here at JPC we also have some fun activities planned for the whole school throughout the week. More details next term.

Na mihi nui kia koe,

Nancy Macmillan Extn 8854

Neil Carter Extn 8808

## JPC CARD 'ELVES' BUSY AT WORK



The JPC Young Vinnies are well on the way with this year's Christmas orders already.

Between now and Christmas they make hundreds of cards for prisons, the hospital and the elderly so require any used Christmas and greeting cards and embellishments.



Mrs G Cook  
Teacher in Charge  
E: [Gillian.cook@jpc.school.nz](mailto:Gillian.cook@jpc.school.nz)



**PROLIFE YOUTH EVENT IN THE SEPTEMBER HOLIDAYS: LIFEFEST** is happening on the first two days of the September holidays (Monday 26<sup>th</sup> and Tuesday 27<sup>th</sup> September).

This amazing 2 day event includes the most incredible international speakers, the **Sisters of Life** from New York, **Movie Producer Jason Jones** from Hawai'i, Canadian Editor in Chief of LifeSiteNews, **John-Henry Westen** and newly commissioned Auxiliary Bishop of Sydney, **KIWI †Bishop Richard Umbers**.

In addition, there will also be amazing food, fellowship, prayer and a **sleepover at the Catholic Discipleship College, Auckland**. **Cost is only \$20** so come with all your friends. Places are limited so register today. [www.fli.org.nz/lifestest2016](http://www.fli.org.nz/lifestest2016) or text Michael on 021 825 955.

**JOHN PAUL COLLEGE CONGRATULATES TE MAHARA SWANSON HALL** on winning Nga Manu Korero Senior Speech Competition Regionals earlier this year and wishes her luck as she leaves to represent Te Arawa, competing at the National competition in Whangarei this week.

Te Mahara is the first student from JPC in the history of Nga Manu Korero, to compete in a senior section of the competition at Nationals.

Kia kaha Te Mahara. Kia mau te wehi!



**PLEASE COMPLETE OUR BOXES AND RETURN BEFORE 3pm WEDNESDAY**

**SAMARITAN'S PURSE: OPERATION CHRISTMAS CHILD**

Open up a whole new life through the power of a simple gift

*Whose life will your shoe box change this year?*

**MAKE A DIFFERENCE TO A CHILD THIS CHRISTMAS**

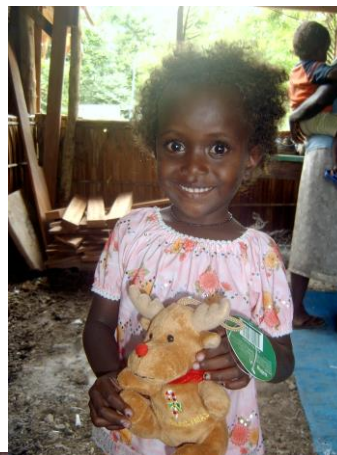


***If you have been unable to complete your shoebox, please return it to school (we can 'top it up' or 'fill it').***

*The JPC 'Christmas Elves and Fairies' look forward to completing this rewarding undertaking so children receiving these gifts 'feel the JPC love' we send to them through your generosity*



*Children on Vella La Vella Island receiving boxes in the Solomon Islands*



*A boy in hospital in Honiara, Solomon Islands – has had dental surgery! so the toothbrush will be most useful!*



*This little girl was soooooo proud to have a new T Shirt!*



*Little girls in a kindergarten in North West Vietnam – notice the clay floor! The clothes are traditional uniforms they live in every day.*





“Today was the big commemoration of the N Z advance on the Battle of the Somme. We had a dawn service, the official ceremony and there was a meet and greet for the students with HRH, Prince Philip - an amazing opportunity. There are a few more royalists as a result. This is a really interesting trip. We've been to Le Quesnoy which the NZ troops liberated in the last week of the war and will visit the Wellington Quarry on Saturday”.  
*As reported by Madame Clark from the Somme ~ Friday 16th September*



**🌸 SPRING CLEANING TIME 🌸**  
***Having a clean out these holidays?***

If you have any items which can be donated to the Spanish/French 2017 trip garage sale, we would be grateful to receive them between now and 15 October. Please contact Niki Carling (027 324 3244) to arrange pick up.



**Congratulations to the Senior A Netball Team** who recently competed in the UNISS tournament **and to the Year 8A Team** who competed at AIMS. Both teams represented JPC admirably and were a credit to us.



**HOUSE OF HORRORS 2016 ~ THE THEME IS 'NIGHT TERRORS'**

05 to 08 October

Age restrictions - 7pm ages 8+ and 9pm ages 12+

**TICKETS NOW ON SALE**

\$15 tickets available from the RYC

or <http://rotoruyouthcentre.org/> for an online discount.

***House Of Horrors sells out every year before the doors even open, so purchase your ticket now to avoid disappointment.***



## MENTAL HEALTH AWARENESS WEEK (October 10-16<sup>th</sup>)

### MUSIC FUNDRAISER CONCERT & AUCTION

*Featuring Ellis Carrington, Elisha Hulton, Francis Cowan, Ian Campbell and Barry Smith  
Proceeds to Rotorua Mental Health Awareness Week*

**Where:** Rotorua Little Theatre

**When:** 11<sup>th</sup> October

**Time:** Bubbles and Canapes at 7pm      Concert starts at 7.30pm

**Tickets:** \$25, available from Liz Carrington – E: [liz.carrington@lakesdhb.govt.nz](mailto:liz.carrington@lakesdhb.govt.nz)  
Limited seats

+++++

#### **Opportunity for Public Speakers and writers –**

**John Paul College are invited to participate in these events -**

#### **Writing Competition Year 7 and 8's**

No more than 800 words-How connecting with Nature keeps me healthy and happy

No limit on student entries-all entries to be sent to:

Liz Carrington

C/O Lakes District Health Board, Cnr Arawa & Ranolf Streets, Private Bag 3023, Rotorua 3046

Closing date: 26<sup>th</sup> September 2016

#### **Speech Competition Year 9 and 10's**

Subject-Connect with Nature for Better Mental Health and Wellbeing

Speech to be 2-4 minutes long

Up to 2 students to be nominated by the school to participate at the closing ceremony. This will be held Friday 14<sup>th</sup> October 1pm at the Council Chambers, Rotorua Lakes Council.

#### **Speech Competition Year 11, 12 and 13's**

Subject-Connect with Nature for Better Mental Health and Wellbeing

Speech to be 4-6 minutes long

Up to 2 students to be nominated by the school to participate at the closing ceremony. This will be held Friday 14<sup>th</sup> October 1pm at the Council Chambers, Rotorua Lakes Council.

Please see Mrs Thurston as soon as possible if you wish to enter these events.

### **THE NEW ZEALAND CADET FORCE'S ROTORUA DISTRICT CADET UNIT IS RECRUITING NOW!**

Anyone wishing to experience New Zealand Defence Force culture and training is welcome to come down to our Headquarters on Geddes Road, off of Lake Road - Tuesdays 6 - 9pm. The New Zealand Cadet Forces is a NZDF administered youth organisation for ages 13-18 and provides skills which are relevant to both a future military career and civilian life. This is an excellent opportunity for those who are interested in careers with the NZDF to see what it is really about, and to gain skills and life long friends along the way. In addition, we are always looking to expand our adult instructor staff, so anyone who is interested in instructing and leading youth in a military environment should feel free to come down to the Unit. As a community unit, any visits or interest in the Unit is welcome. For more information visit <http://www.cadetforces.mil.nz/>



BayTrust operates and funds a Dillon Scholarship which provides financial assistance to people who have significant physical or intellectual disabilities and will be undertaking tertiary education in 2017. The Dillon Scholarship is only open from 1 November up until 18 December each year to receive applications.

For more information go to the BayTrust website [www.baytrust.org.nz](http://www.baytrust.org.nz) or phone 0800 654 546 / 07 578 6546.



**Limited spaces available NOW**

## The Treehouse on Ranolf Child Care Centre

141 Ranolf Street

Limited spaces available NOW for 20 Hours free child care for 3-5 year olds

Spaces also available for 0-3 year old spaces



illustrations of.com #1070170

The Treehouse on Ranolf is a small locally owned childcare environment that provides a home away from home to the children in our care, ensuring they feel secure to explore through play and the environment.

- Nutritious food provided
- Our teachers are friendly, open, experienced and qualified. We are here to support you and your child on their first learning journey.
- Our environment is language rich, homely and natural, the environment provides provocations for children's learning and development through active exploration.
- Fantastic Education Review Office reports
- We have excellent adult: child ratio to ensure connected relationships, learning observations and safety are all provided to the best possible standard.
- We are open all year excluding public holidays

**Ring our friendly teachers now on 07 3485734 or call in and see us**



# Kay Humphries Travel

Where Passion And Expertise Combine

Your locally owned and operated  
travel specialist

## Kay Humphries

Travel Manager & Cruise Specialist

Phone: +64 7 883 7368 | Email: [kay@khtravel.co.nz](mailto:kay@khtravel.co.nz)

Web: [kayhumphriestravel.co.nz](http://kayhumphriestravel.co.nz)

**Real estate results that move you!!**



Licensed Agent REAA 2008



[SIGNCRAFTBOP.CO.NZ](http://SIGNCRAFTBOP.CO.NZ)

23 HAMIORA PL

**07 345 9886**

**BUILDING SIGNAGE REAL ESTATE SIGNS  
FOOTPATH SIGNS VEHICLE GRAPHICS  
DIGITAL PRINTING MACHINERY DECALS  
GRAPHIC DESIGN AND MORE...**

 **Speedy Signs**  
grow your business faster

[www.speedysigns.co.nz](http://www.speedysigns.co.nz)

Your Complete Branding Solutions Partner

1198 Arawa Street Ph: 349 1000 E: [rotorua@speedysigns.co.nz](mailto:rotorua@speedysigns.co.nz)

**EmbroidMe**

[www.embroidme.co.nz](http://www.embroidme.co.nz)

**Does your home loan work for you,  
or for your bank?**



Mark Sims  
07 348 1575  
027 575 0795

**With NZHL our clients are  
currently saving \$33,835,739\*  
in interest costs.**

Contact Mark for a no obligation home loan comparison to see how much you could save on interest and make your home loan work for you.

**NZHL**

\* Figure based on actual balances of current clients at the current NZHL floating interest rate and correct as at 31/03/2016  
Standard lending criteria applies

new zealand HOME LOANS

[mark.sims@nzhomeloans.co.nz](mailto:mark.sims@nzhomeloans.co.nz)

New Zealand Home Loans Rotorua City





# PARENTS & STUDENTS YOU'RE INVITED!

What's new for 2017? Come along to find out more about our degrees, diplomas, certificates and trades training. Find out more about our study pathways with the University of Waikato and AUT

Meet our Heads of Department and find out if our programmes are right for you, your son or daughter in 2017.

Date: Tuesday 18<sup>th</sup> October

Time: 5.30pm – 7.00pm

Location: The Atrium, H Block, Gate One,  
Waiariki Bay of Plenty Polytechnic, Windermere  
Campus, 70 Windermere Drive, Tauranga

RSVP BY FRIDAY 14<sup>th</sup> OCTOBER

Email: [marketing@boppoly.ac.nz](mailto:marketing@boppoly.ac.nz)

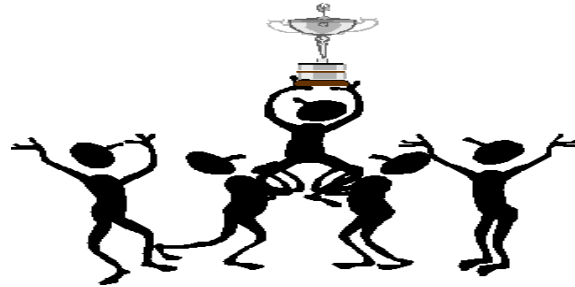
**boppoly.ac.nz**

**WAIAR IKI**  
BAY OF PLENTY  
POLYTECHNIC

# Calling All Intermediate and High Schools

**COMPETITIONS !! COMPETITIONS!!**

**PRIZES!!! PRIZES!!!**



***Writing Competition for Intermediate aged students  
(Years 7&8) Tell us in 800 words: “How connecting with  
nature keeps me healthy and happy”***

**Age group-Year 7-8 entries to be sent to: Liz Carrington C/O Lakes District Health Board, Cnr Arawa & Ranolf Streets, Private Bag 3023, Rotorua 3046 Winners will be notified by telephone by 11<sup>th</sup> October and winners will be invited to attend the prize giving at the Council Chambers Friday 14<sup>th</sup> October.**



***Speech Competitions for High School aged students  
‘Connect with Nature for Better Mental Health and  
Wellbeing’***



**Parents and teachers: These competitions are run by Lakes District Health Board**



**Linkage as part of this year's Mental Health Awareness Week 10-16<sup>th</sup> October 2016.**

## ROTORUA MEDICAL GROUP - NEW PATIENTS WELCOME

Central Health 1181 Amohia Street, Rotorua (next door to Central Pharmacy)  
Fairy Springs Medical Centre 10-100 Fairy Springs Road, Rotorua

We are dedicated to providing affordable, quality healthcare for you and your family. Our team of doctors, nurses and support staff partner with you to manage your health and wellbeing.

We have two modern, convenient sites providing you with the flexibility of location and continuity of care. For added convenience we run a daily Drop in Clinic from Central Health:

Monday to Friday 9.00am to 11.00am and in the afternoon 2.00pm to 4.00pm

Fairy Spring Medical Centre also has a Drop in Clinic: Monday to Friday 9.00am to 11.00am

For friendly, professional and low cost healthcare services, contact us today

Tel: 07 3470000 [admin.rmg@rpgg.co.nz](mailto:admin.rmg@rpgg.co.nz) | [www.rotoruamedical.co.nz](http://www.rotoruamedical.co.nz)



# Achieve

## Workplace Health

"Achieving successful safety solutions"

1181 Amohia Street, Rotorua

(next door to Central Pharmacy)

Contact Sheryl DDI 07 3431952 or 07 3470000

### Health and Safety at Work

If you are an employer you will know that the Health and Safety at work (General Risk and Workplace Management) regulations come into force April 2016

### What does this mean for you?

- **Pre-employment**
  - Inform workers of exposures expected
  - Inform workers of possible health effects
  - Inform workers of health monitoring required
- **Health Monitoring**
  - Frequency
  - Reporting
  - Record Keeping

Our nursing team members are experienced in working successfully with businesses both locally and nationally. We are able to help your organisation or business with workplace practices, improved employee health, reduced absenteeism, reduced injury rates and rapid return to work for employees.

We listen to your needs and tailor our services to be relevant and cost effective to you.

We offer a full range of Occupational Health Services including (but not limited to):

- Breath Alcohol Testing
- Instant Drug Testing to AS/NZ 4308:2008 Standard of Compliance
- Laboratory Drug Testing to AS/NZ4308:2008 Standard of compliance
- Testing to Synthetic THC

