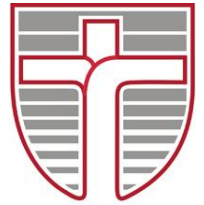




John Paul College, Rotorua

Whitworth Road, Rotorua. www.jpc.school.nz Ph: 07 3478 795 Fx: 07 3461 271
A WEEKLY NEWSLETTER FOR THE JOHN PAUL COLLEGE COMMUNITY
Term 4, Issue 38 28th November 2016



Ma te pono Me te aroha – Through Faith and Love

2016 School Theme : *Success is not final, Failure is not fatal.
It is the courage to continue that counts ~ Winston Churchill*

Dear Parents/ Caregivers

Kia Ora, Malo e Lelei, Talofa, Greetings

SCHOOL FEES

We have finalised plans for 2017 with respect to further resources and facilities available to your children. The government funds only a small portion of this, the remainder coming from school fees. Thank you to all parents who have paid school fees. If you have not, I strongly encourage you to do so.

LEAVERS FORMS

If you know that your child will not be returning to JPC in 2017, please ensure a Leavers Form is collected, completed and returned to the office by 8th December. We have a waiting list and would appreciate the opportunity to offer places to these students.

IMPORTANT EVENTS FOR THE LAST WEEK OF TERM

Please note the following important events in your diary:

Tuesday	6 th	1.00-3.00pm	Year 7/8 Co-curricular Prizegiving	Edmund Rice Centre
Wednesday	7 th	10.00am	Junior End of Year Mass	Edmund Rice Centre
Thursday	8 th	1.00-3.00pm	Year 9/10 Co-curricular Prizegiving	Edmund Rice Centre
Friday	9 th	10.00am-12.00	Year 7-10 Prizegiving	Edmund Rice Centre

Parents/ Caregivers are welcome to attend all of these events

SCHOOL WILL BE CLOSED FOR THE END OF YEAR STAFF FUNCTION ON MONDAY 12th DECEMBER.

The office will be open Tuesday 13th to Friday 16th from 8am-4pm and closes for the year on Friday 16th at 4pm. Please refer to the office hours and 2017 dates on page 2.

Patrick Walsh
Principal



Tena kouotu katoa, our last **WHANAU SUPPORT GROUP HUI** for the year will be held on **Wednesday the 30th November** in the whare at 5.30pm. We will be discussing the role of the whanau support group in disciplinary proceedings and Mr Walsh will be presenting. Look forward to seeing you there, shared kai at 7pm, na Eugene.

EAMON WALSH YEAR 12 WINS NATIONAL SHAKESPEARE COMPETITION

Eamon Walsh Year 12 performing as Bottom in *A Midsummer Night's Dream* beat student actors from throughout New Zealand to win the **Speech New Zealand Shakespearean Monologue Competition**.

The judge was acclaimed New Zealand actress Robin Payne now residing in Australia who has spent a lifetime acting in theatre throughout the world. Her work has included Guest Artist with the Royal Shakespeare Company, Stratford-upon-Avon, Director Te Kura To Whakaari and most recently Senior Lecturer International Theatre Institute, Singapore. Well done Eamon winning this prestigious national competition – Gabrielle Thurston **HoD Drama**

The John Paul College 2016 MAGAZINE will be distributed to the eldest child in each family

- **If the eldest is in the junior levels, the magazine will come home on Friday 9th December**
- **If the eldest is a senior, with no junior siblings, the magazine will be available for pick up from the public reception from Tuesday 13th – Friday 16th December – between 8am to 4pm**

All outstanding text books, library books, sports uniforms and fees must be received prior to receiving your magazine.

UNIFORM SHOP

OPEN MONDAYS/WEDNESDAYS/FRIDAYS

8a.m to 4.p.m

CLOSED 11.30a.m-12.30p.m



Last day for 2016:
Wednesday
December 7th

Mrs C Constable -
Uniform Shop Manager

E: Carolyn.constable@jpc.school.nz

PLACE YOUR ORDER FOR THE JPC SENIOR BLAZER

Apply to the student counter for sizes & measuring

Full cost is \$200; \$100 deposit is required at time of ordering

BYOD (*Bring Your Own Devices*)

Brochures are available at student counter

Any inquiries to Maree Stewart

E: maree.stewart@jpc.school.nz

NB: *Devices ordered through school from Noel Leeming have to be paid for at Noel Leeming before they are picked up. They will be delivered to JPC for collection.*

END OF TERM EVENTS

NOVEMBER

28-30th Year 7 Beach Education

28th -5th Dec Year 10 Activities

**SCHOOL OFFICE
WILL BE CLOSED
4pm FRIDAY 16th DEC
RE-OPENING**

MONDAY 23rd JANUARY 2017 8am

**2017 TERM DATES
WEDNESDAY February 1st
Year 7s 8.30am – 2.00pm**

**THURSDAY February 2nd
Full school attendance
8.30am-3.05pm**

**Term 1 Ends 13th April
Term 2 1st May – 7th July
Term 3 24th July – 29th September
Term 4 16th October - tbc**



**YEAR 13
LEADERSHIP CAMP
will be held from Tuesday
31st January
returning Thursday the
2nd February**

Students and chaperones will be staying at The Park Hotel at National park and completing the Tongariro Crossing on Wednesday 1st February, along with other leadership activities.

Price: \$220 to be paid before 9th December 2016.
Information and permission slips have been distributed.

Spring cleaning?

WANTED

**Unused, unwanted vases or
water jugs, knives, forks, spoons
pots, baking trays
Please donate to JPC
and bring to reception**



CAREERS OFFICE OPEN UNTIL 2nd DECEMBER

The Careers Office is still open for students and parents needing assistance with Careers Advice and Information.

RUGBY NEWS

Summer Training Sessions for the 2017 season, for all Year 7-12 students have started! Training dates and times are available from Mr Hounsell at the PE Office. No excuses!!! For more information contact: Steve Orr 027 491 9495

Congratulations to Maia Carrington who has been selected for the NZRU talent identification programme following the BOPSS 7s. The camp starts in December and Maia is really looking forward to this opportunity. She would like to thank her coaches Mr Hounsell and Mr Webby for their support this year in her 7s. Mr Hounsell

BE PREPARED TO SIT YOUR LICENCE

with Lill Emery

Tutor/ Driving Instructor

Learner Driver Licence: 3 Day Courses:

6th, 7th, 8th December

13th, 14th, 15th December

Learn and Practice the Licence Theory Test

Go online and prepare for the real thing.

Day 3: visit AA To sit your Test—\$93.90

(Literacy & Numeracy Support Provided)

Course Costs: \$65

Course payments can be made at the Youth Centre to book your place on the next course. Don't miss out, spaces filling fast!!

Essential Documents

2 Forms of ID Required on the Day 1

Original Birth Certificate or Original Passport & proof of address—ie a letter posted to your name and address on it.

Location: Rotorua Youth Centre

6 Te Ngae Road, Rotorua

Inquiries: 027 411 4104 Lill or 07-343 1012

Drivers for Restricted & Full Licence

Contact Lill Direct



North Island Junior Secondary Schools Water Polo

A mix team travelled to Auckland to compete in Boys Division II Water Polo. 4 days of competition, 16 teams competed in this grade. JPC played 6 games, won 5, lost 1.

JPC top their group in round robin games, which earned them a quarter final against Glendowie College.

Glendowie took the lead early, but JPC came back with a flurry of goals to win 12 – 2.

Onto the semifinal against Green Bay College, the power and strength of their players dominate the first half of the game, but JPC hung in there to draw level 7 all, 2 quick power shots in the last minute by Green Bay, game over.

On to the bronze medal match.

“John Paul College (Rotorua) was 0-2 down after the first quarter for bronze against Mount Maunganui College (Tauranga), but kicked into gear and only conceded another goal for a final score of 9-3.”

~ NZ Water Polo Media.

Bronze winning Team:

Joshua Balmer. Tobias Christensen.

Samuel Davies. Kate Elvy. Tayla Framp.

Hazel Hagan. Oliver Keaney.

Ronan Mc Kenzie (Goalie). Tarquin McKenzie.

Kasey Seekup. Jacob Stubbing.

A huge thank you to Coaches and Team Manager
Coaches: Anna Bird. Katie Gimblett.

Team Managers: Arthur Faulkner. David Davies.



BOP Year 7 & 8 Zone Athletics.

Congratulations to the small team of 17 students that competed at BOP Year 7 & 8 Zone Track and Field Championships on Wednesday 23rd November at Tauranga Domain.

Team Manager: Barb Northey. Track official: Arthur Faulkner.

Results.

Year 7 Girls

Poppy Collins: 3rd 100m. 2nd 200m

Megan Williams: 3rd 200m. 2nd 300m. 2nd High Jump.

Gisele Howard: 3rd 300m. 3rd 800m. 1st Long Jump. 3rd Discus

Taylah Hyde: 3rd Long Jump

Year 7 Boys

Benjamin Comber: 1st 200m. 1st 300m. 1st Long Jump

Kim Padayhag: 2nd 200m.

Joshua Tavendale: 2nd 300m.

Year 8 Girls

Hannah Gapes: 3rd 200m. 3rd 300m. 1st 800m. 1st 1500m.

Year 8 Boys

Mydas McBurney: 3rd Discus

Relays:

There were some interesting selections, as some students that don't do sprints ended up in relay teams.

1st: Year 7 - 4 X 100m (Gisele Howard. Megan Williams. Kim Padayhag. Joshua Tavendale.)

2nd: Year 8 – 4 X 100m (Dolce Kissling-Hemworth. Hannah Gapes. Joseph O'Leary. Mydas McBurney)

3rd: Year 7 & 8 – 4 X 100m (Poppy Collins. Emma-Sue Marriner. Ben Comber. Vaden Kanara-Butt.)

Top Year 7 Boy overall: Ben Comber.

2nd Year 8 Girl overall: Hannah Gapes.

School Points: JPC 2nd overall.



Thank you to all the parents that help transport and support our students on the day.



Dear Parent/Caregiver

RE: JPC Itinerant Music Scheme

Students attending John Paul College are fortunate to benefit from the Itinerant Music Scheme. This scheme allows students to learn musical instruments/vocals during the school day for a discounted price.



**JOHN PAUL
COLLEGE
ROTORUA**

The cost of most lessons is \$85 per term. This fee assists the school to pay itinerant music teacher salaries and also includes a \$25 fee which pays for photocopying, purchase of sheet music, instrumental repairs etc

We offer the following instrumental lessons at John Paul College:

- Piano/keyboard (**note: piano lessons are \$12.50 a lesson**)
- Strings – violin, viola, cello, double bass
- Brass – trumpet, trombone
- Wind – flute, clarinet, saxophone (alto, tenor, & baritone)
- Guitar – acoustic (including Classical), electric guitar, & bass guitar
- Drum Kit
- Vocals – soprano, alto, tenor, & bass
-



If the instrument you are interested in is not listed above please enquire by sending me an email

It is recommended that if your son/daughter takes instrumental/vocal lessons at school, they also join a music extra-curricular ensemble which usually runs after school and at lunchtimes in the John Paul College Music Department. Students can audition (or be recommended by their instrumental/vocal teachers) for the following:

- Jazz Band
- Concert Band
- Choir
- String Ensemble
- Rock Bands (resources and band room available)

The John Paul College Jazz Band has gone from strength to strength over the past few years where we have achieved considerable success in local competitions and events. The Music Department's goal is to build on this success with more students taking *woodwind and brass* lessons, and explore the possibility of taking the John Paul College Jazz Band/Concert Band to play in Australia in the near future. When choosing an instrument, please consider the possibility of your son/daughter learning one of these amazing instruments and getting involved with the Jazz Band/Concert Band. *We need more students learning alto sax, tenor sax, trumpet, trombone, clarinet and flute.*

If your son/daughter is interested in learning an instrument please fill out the slip below as soon as possible to avoid disappointment as spaces fill up very quickly. If you have any further questions about the Music Itinerant Scheme, please email me at matt.czyrek@jpc.school.nz

Yours faithfully

M. Czyrek – HOD Music

Musical Instrument / Vocal Lessons 2017

Student Name:Year level in 2017

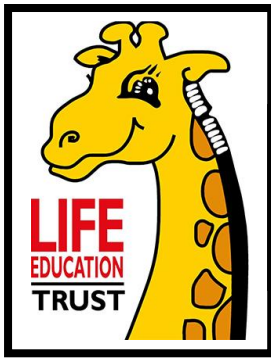
To learn the following instrument/vocal.....

Parent/Guardian's Names:

Address Postal Code.....

Phone E-mail

Signature of Parent/Caregiver



All proceeds to Life Education Trust Rotorua

Follow the epic journey of Ray Cook and Crew from New Zealand to Europe Wednesday 7th December 5.30pm Novotel Lakeside

Tickets on sale at City Books & Lotto \$20 per person

Dear Parents/Caregivers,

Re: 2017: Drama, Speech, Public Speaking and Communication Classes

Lessons are divided into four semesters each of eight lessons. By the end of the year it is expected each student will have had a minimum of 32 lessons.



Fees for 2017

- Grade 1 - 4 \$170.00 Inc GST per semester - approximately Y7-9
Grade 5 \$180.00 Inc GST per semester - Year 10
Grade 6 \$190.00 Inc GST per semester - Year 11
Grade 7 \$200.00 Inc GST per semester - Year 12
Grade 8 \$210.00 Inc GST per semester - Year 12
ASB Dip \$210.00 Inc GST per semester - Year 13

Speech classes at John Paul College are by private tuition and do not receive any financial contribution from the College operating budget. A Terms notice is required if your son or daughter wishes to withdraw from any speech class.

Vacancies for 2017 are strictly limited so ensure you enroll as soon as possible. Late enrolments will be placed on a waiting list as in previous years. If you wish to enroll or re-enroll your child, fill in the form below and return to your form teacher as soon as possible. Current students of Speech & Drama must also re-enroll on the attached form. By signing the form you are agreeing to pay fees at the beginning of each semester and to giving one terms notice of withdrawal.

Gabrielle Thurston HoD Drama, FTCL, Adv ASB (Speech & Drama), LSB (Public Speaking), Accredited Adjudicator, RTSCA, CAT (Cert Adult Teaching), Dip Tchg, Speech New Zealand Chairman and Examiner.

X.....

Speech Classes 2017

Student Name: Year Level in 2017

Parent/Guardian's Names:

Address Postal Code.....

Phone E-mail

Signature of Parent/Caregiver

DRIVER DIRECTIONS

Driving Towards the Future.



FREE
programme
to support
safe driving
behaviours and
practices for
novice drivers

Find us on **Facebook** Driver Directions

We look forward to working with you

LAST ONE FOR 2016
Tuesday December 6th
No Cost
www.rotorualakescouncil.nz/driverdirections



Helping you move forward

"a very professional manner and great communicator to make life that little bit easier on such a big decision." - Jason

www.THEWESTWOODS.co.nz

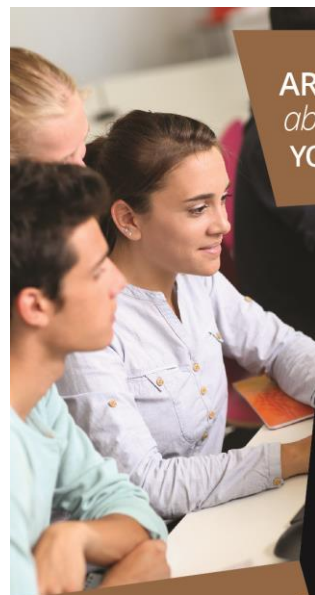
viprealty.co.nz

Licensed Real Estate Agent REAA 2008

Tina & Ben

022 682 6992

tinaben@viprealty.co.nz



ARE YOU CONCERNED
about the career choices
YOUR TEEN IS MAKING?

- Which school subjects?
- Which degree or course?
- Which papers?
- Which occupation?

We make these choices easy

- Career Counselling
- CV Writing
- Interview Coaching
- Staff Specialists

GOAL digger
CAREER SOLUTIONS

info@goaldigger.co.nz
www.goaldigger.co.nz

PHONE
07 393 2424



HELLO HOLIDAYS

Holidays restore what everyday life steals from you...it's true!

helloworld Rotorua is proud to support the Students, Families and Teachers at JPC. Contact us now for all your Leisure, Corporate and Group travel requirements.

100% locally owned and operated

helloworld Rotorua 📍 1235 Tutanekei Street
☎ 07 349 4130 📧 rotorua@helloworld.co.nz

helloworld
EXPERTS IN EVERYWHERE

Limited spaces available NOW

The Treehouse on Ranolf Child Care Centre

141 Ranolf Street

Limited spaces available NOW for 20 Hours free child care for 3-5 year olds

Spaces also available for 0-3 year old spaces



illustrations of.com #1070170

The Treehouse on Ranolf is a small locally owned childcare environment that provides a home away from home to the children in our care, ensuring they feel secure to explore through play and the environment.

- Nutritious food provided
- Our teachers are friendly, open, experienced and qualified. We are here to support you and your child on their first learning journey.
- Our environment is language rich, homely and natural, the environment provides provocations for children's learning and development through active exploration.
- Fantastic Education Review Office reports
- We have excellent adult: child ratio to ensure connected relationships, learning observations and safety are all provided to the best possible standard.
- We are open all year excluding public holidays

Ring our friendly teachers now on 07 3485734 or call in and see us



Kay HumphriesTravel

Where Passion And Expertise Combine

Your locally owned and operated
travel specialist

Kay Humphries

Travel Manager & Cruise Specialist

Phone: +64 7 883 7368 | Email: kay@khtravel.co.nz

Web: kayhumphriestravel.co.nz

Real estate results that move you!!



SIGNCRAFTBOP.CO.NZ
23 HAMIORA PL

07 345 9886

**BUILDING SIGNAGE REAL ESTATE SIGNS
FOOTPATH SIGNS VEHICLE GRAPHICS
DIGITAL PRINTING MACHINERY DECALS
GRAPHIC DESIGN AND MORE...**



Speedy Signs
grow your business faster

www.speedysigns.co.nz

Your Complete Branding Solutions Partner

1198 Arawa Street Ph: 349 1000 E: rotorua@speedysigns.co.nz

EmbroidMe

www.embroidme.co.nz

**Does your home loan work for you,
or for your bank?**



Mark Sims
07 348 1575
027 575 0795

**With NZHL our clients are
currently saving \$33,835,739*
in interest costs.**

Contact Mark for a no obligation home loan comparison to see how much you could save on interest and make your home loan work for you.

NZHL

* Figure based on actual balances of current clients at the current NZHL floating interest rate and correct as at 31/03/2016
Standard lending criteria applies

mark.sims@nzhomeloans.co.nz

New Zealand Home Loans Rotorua City

ROTORUA MEDICAL GROUP - NEW PATIENTS WELCOME

Central Health 1181 Amohia Street, Rotorua (next door to Central Pharmacy)
Fairy Springs Medical Centre 10-100 Fairy Springs Road, Rotorua

We are dedicated to providing affordable, quality healthcare for you and your family. Our team of doctors, nurses and support staff partner with you to manage your health and wellbeing.

We have two modern, convenient sites providing you with the flexibility of location and continuity of care. For added convenience we run a daily Drop in Clinic from Central Health:

Monday to Friday 9.00am to 11.00am and in the afternoon 2.00pm to 4.00pm

Fairy Spring Medical Centre also has a Drop in Clinic: Monday to Friday 9.00am to 11.00am

For friendly, professional and low cost healthcare services, contact us today

Tel: 07 3470000 admin.rmg@rpgg.co.nz | www.rotoruamedical.co.nz



Achieve

Workplace Health

"Achieving successful safety solutions"

1181 Amohia Street, Rotorua

(next door to Central Pharmacy)

Contact Sheryl DDI 07 3431952 or 07 3470000

Health and Safety at Work

If you are an employer you will know that the Health and Safety at work (General Risk and Workplace Management) regulations come into force April 2016

What does this mean for you?

- **Pre-employment**
 - Inform workers of exposures expected
 - Inform workers of possible health effects
 - Inform workers of health monitoring required
- **Health Monitoring**
 - Frequency
 - Reporting
 - Record Keeping

Our nursing team members are experienced in working successfully with businesses both locally and nationally. We are able to help your organisation or business with workplace practices, improved employee health, reduced absenteeism, reduced injury rates and rapid return to work for employees.

We listen to your needs and tailor our services to be relevant and cost effective to you.

We offer a full range of Occupational Health Services including (but not limited to):

- Breath Alcohol Testing
- Instant Drug Testing to AS/NZ 4308:2008 Standard of Compliance
- Laboratory Drug Testing to AS/NZ4308:2008 Standard of compliance
- Testing to Synthetic THC

