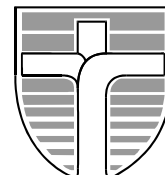




John Paul College, Rotorua

Whitworth Road, Rotorua. www.jpc.co.nz Ph: 07 3478 795 Ex: 07 3461 271
A WEEKLY NEWSLETTER FOR THE JOHN PAUL COLLEGE COMMUNITY
Term 2, Issue 12 30th April 2012



Ma te pono Me te aroha – Through Faith and Love
2012 School Theme 'Where Tomorrow Begins'

Dear Parents/ Caregivers

Kia Ora, Malo e Lelei, Talofa, Greetings

JOHN PAUL COLLEGE CELEBRATING 25 YEARS

On May 23rd, we are celebrating the amalgamation of Edmund Rice College and McKillop College. Bishop Browne will be officiating a Mass at 10a.m followed by morning tea in the staffroom. As this is the 25th Jubilee, the Bishop will also be blessing our garden of remembrance along with a plaque commemorating 25 years. We wish to invite people who played a part in the amalgamation of the two Colleges. If you are interested in attending or know of anyone who may like to be invited, could you please contact Liz Lock at the College on 3478 795 xtn 8839 or liz.lock@jpc.school.nz

OPEN NIGHT FOR 2013 ENROLMENT ENQUIRIES: WEDNESDAY 13th JUNE @ 5.30pm

I wish to give parents advanced notice of our Open Night, which will begin at 5.30pm on Wednesday June 13th with a tour of the College followed by presentations in the Edmund Rice Centre.

John Paul College is subject to an enrolment scheme which limits our roll to 1100 students. Every year, applications exceed places available. We would however, like to give every prospective parent and student the opportunity to see what a John Paul College education can provide them.

If you or anyone you know is considering John Paul College, then please put this date in your diary. We would love to see you there. Application forms will be available on the night and can also be downloaded from our website www.jpc.co.nz or from the main reception.

SCHOOL FEES (Donations)

I wish to take this opportunity to thank all parents and caregivers who make every effort to pay school fees despite the difficult financial circumstances.

We take no pleasure in asking for school fees but the reality is, we could not provide the high quality education you have come to expect without those fees. By way of example, the College intends to go wireless later this year which will be enormous benefit to students and staff. This project will cost \$70,000.

1st XV FUNDRAISER AT THE HOLIDAY INN

My thanks to all parents and friends of the College who supported the 1st XV's fundraiser at the Holiday Inn on Saturday night. It was very professionally run, the boys looked superb in their N^o 1's and it was a great community night for John Paul College. Special thanks to the Holiday Inn for their generous support, the Coach, Mr Brendan Webby, for being a wonderful M.C and Mrs Lyn Norman who was the backbone of the organisation.

WINTER SPORTS CODES

The students at John Paul College are very excited about beginning the winter sports season. I wish to extend a vote of thanks to all those teachers, parents and friends of the college who have generously agreed to coach, manage, transport, launder and fundraise for teams. It is only through your commitment that we are able to field so many players and give our students an opportunity to shine.

Patrick Walsh - Principal

UPDATING CONTACT DETAILS

Parents are asked to please update contact details. Already this term there have been emergencies and parents have been uncontactable due to incorrect contact details on the database. Email your amended details to sue.rowles@jpc.school.nz. Thank you

CHANGEOVER TO WINTER UNIFORM

ALL STUDENTS SHOULD BE IN WINTER UNIFORM FROM MONDAY MAY 7th

JPC Uniform Shop is open from 8am-4p.m (Closed for lunch 11.30am-12.30pm)

PTA 2nd HAND WINTER UNIFORM SALE 3.30-5.00pm Thursday 3rd May

PTA Office at rear of the Edmund Rice Centre

Has your child outgrown their summer uniform? Save space and donate it to the PTA.

EVENTS IN TERM 2

Updates will be added in 'red' please check weekly

APRIL

30-May 4 NZ Speech Comp TG

MAY

1-3 Year 12 Camp – BE

3 PTA 2nd hand uniform sale 3.30-5.00pm

9-11 Yr 12 Geography Trip – SM

10-13 Yr 13 PE Bike Camp – NB

14 Yr 9-13 Cross Country

16-18 Yr 9 Retreats

22 ICAS Computer

23 JPC Day – 25th Anniversary Celebration

24/25 Careers Expo

25/26 40-Hour Famine

28-June 1st Yr 11-13 Mid Year Exams

JUNE

6 ICAS Science

6 Waikato/BOP Cross Country

12 BOP Gymsport Yrs 7/8

13 Open Night – 5.30pm

14 Fieldays

15 Teacher Only Day

16 Senior Ball

19 ICAS Spelling / ICAS Writing

19 Yr 9 Coastal Care Programme – KO

20 Junior Report Evening

20 BOP Cross Country Qualifying

20 Coastal Care Programme Year 9 - KO

20-22 Yr 10 Retreats

22 PTA Trivial Pursuit

25 Year 11 Geography Trip

26 Signum Fidei Meeting

27 Snr Report Evening

27 Y7/8 BOP Cross Country Champs

HIGHLIGHTS IN THIS ISSUE:

Page 2 Thank you to 1st XV sponsors

Page 3 From the Sports Desk

Page 4 JPC successes

Tai Mitchell Trials info

JAB Rugby registrations

Limited spaces for Successmaker

Tweens/Teens Toolbox Course

Page 5 2012 Entertainment Books

Automotive Course registrations due

Youth Group Meeting

Page 6 Careers Information

Page 7 Australian Maths Competition

Mathsbuddy Information Evening

Page 8 Community Communication Process

Page 9 White Cloud Worlds at the Museum

Page 10 JPC Community Classifieds

SENIOR WATERPOLO GOLD MEDAL

Our apologies to Mark Robilliard who was left off the 'gold' medal list in last week's newsletter.

**The HOMEWORK CLUB has
been relocated back into the
newly refurbished Library.
Mondays and Wednesdays
3.15pm to 5.00pm**

JOHN PAUL COLLEGE 1st XV would like to thank the following sponsors for their support to get us to the Southern Skies Tournament in July 2012

Holiday Inn Rotorua

R D 1 Livestock – Pat Sheely

Salon St Brunos

Bill Davis Sportsworld

Lion Breweries – Charles Baxter

Galaxy Travel & JPC 1st XV

Headmasters Hair Salon

Capers

R D 1 Nutrition

Adidas/ Crusaders Rugby – Matt Wilkinson / Jacqui Hamilton

Bike Force

Balance Agrinutrients

Ecolab

VetPlus

Vet Club

Truck & Tractor Services

Pathfinder

Rose Family

Damar Industries Ltd

R D 1 Rotorua

Chiefs Rugby – Hannah D / Ruta Jaiteh

Marlene Hudson Interior Design

Hurricanes Rugby – Rachel Martelli

Highlanders Rugby – Leicester Rutledge

Whitwood Whanau

Zippy's Café

Gimblett Family

Ralph's Autoshop



The JPC community are encouraged to support our sponsors, thank you.

Why Do Catholics Make Different Signs Of The Cross?



Because they are personal gestures that assist a Christian sanctify daily life with symbols of Jesus' crucifixion. This was done in the early church by drawing a cross on the forehead with the right thumb. Later it was made by tracing a cross by drawing the right hand from head to breast to left shoulder to the right shoulder. A further practise is kissing a cross formed by placing the thumb perpendicularly across their index finger. *Deacon Mike.*



News from the Sports Desk

Congratulations to **Tia Edwards** who made the BOP **Netball New Zealand U17 Talent Development**, this is the pathway to be eligible to play for the 2013 NZ Secondary Schools (ie those returning to school in 2013). Tia also played in the Aotearoa Maori Tournament held over Easter weekend, and was selected for the u17 Maori Tournament Squad.

ROTORUA MINI MARATHON

15 Students had to complete a 40km worth of running over a period of 4 weeks, finished off with a Mini Marathon on Friday 27th April. Students had to complete a 2.5Km run, part of the lead into the Rotorua Marathon on Saturday.

Byron Haigh was the first Yr 7 boy across the finish line.

Hana Stubbing was the first Yr 7 girl across the finish.

Cameron Chandler was the second Yr 8 boy across the finish line.

Archie Tombleson was the third Yr 8 boy across the finish line.

Anna Piebenga was the first Yr 8 girls across the finish line.

Also competing: Sheng-Min Margus Chiu, Trent Davidson, Joshua Gapes, David Harrison, Che Martin, Frances and Katy Ryan, Cullen Smith.

Thank you to Mr Martin, Mrs Piebenga and Mrs Haigh, who helped transport.



JPC BASKETBALL

Season starts this week (Wed & Thu). We have a number of teams entered in the local competition, 3 Boys Yr 7 & 8, 1 Girls Yr 7 & 8, 2 Junior Boys, 1 Junior Girls, 2 Senior Boys and 1 Senior Girls teams.

We still require 5 girls for Yr 7 & 8 team.

Our coaches are involved with local age group teams, and have a very good understanding of the game. This year we will have a Boys and Girls Yr 7 & 8 teams competing at NZCT AIMS Games.

Junior Boys, Junior Girls and Senior Boys will be competing at NZ Secondary Schools Premierships.

Fees for local competition: Year 7 & 8 - \$30. Year 9 to 13 - \$60. (NO PAY, NO PLAY), payable by Wed 9th May.

Penalties: if for any reason we default a game (players don't show), or we don't do our duty night, or we don't supply a referee, we are invoiced an infringement payment.

Notices are available, to be picked up from Sports Coordinator.



2011 SPORTS TROPHIES

Can you please start returning 2011 Sports Trophies.

Please drop off to Mr Faulkner, or leave at school reception.

SPORTING ACHIEVEMENT

Could parents / teachers /students, please advise me as soon as possible, about any sporting achievements to share. i.e. NZ / BOP / Rotorua team,

Won or placed at a sporting event.

Also any sporting photos that your child competed in, just Email : Arthur.faulkner@jpc.school.nz (Sports Director)

ROTORUA GOLD TAI MITCHELL TRIALS

Trial One

Ngakuru School - Thursday 26th April 4pm

Trial Two

Kaharoa School - Tuesday 1st May 4pm

Trial Three

Kaitao Middle School - Thursday 3rd May 4pm

BRING full rugby playing kit PLUS mouthguard
(*no mouthguard, no trial*)

KAHUKURA JAB RUGBY REGISTRATION

Are you interested in playing rugby?

It's not too late to register for junior rugby grades.

Email kahukurarsc@gmail.com or
phone 021 269 9593

HOCKEY Training:

Yr 7/8 JPC Blue, Thursday - lunchtimes at JPC Turf

JPC Red Wednesday 3.25-5.00pm JPC Turf

JPC 2nd X1 Girls Tuesday at lunchtimes

JPC 3rd X1 Girls Tuesday 3.25-4.45pm JPC

Fees must be played prior to playing.

Once your fees are paid, see Ms Northey at
Tuesday thru to Friday lunchtimes outside Sports
Co-ordinator's Office.

UNTREATED TIMBER REQUIRED

Do you have any spare, untreated timber, suitable
sizes for a raised garden? The Science Department
would appreciate your donation.

I am wanting to construct a small (approx 2m x 2m)
raised garden bed at school so students can
see/understand how things actually grow, and who
knows – maybe get some fresh vegies for them to
take home.

Any help would be greatly appreciated. Email
Victoria.proctor@ipc.school.nz

JPC ATHLETIC ACHIEVER OFF TO JAPAN

Congratulations to Molly Florence who has
been selected for the Senior Women's 4x100m
New Zealand Women's Relay Team, to
compete in the World Grand Prix series events
in Japan, in May.

An exciting achievement, well done Molly.

JPC SUCCESS ON THE DANCE FLOOR

Congratulations to **Stephanie Cogger, Katie
Rooney, Jessica Sewell, Rebecca Sewell and
Thacia Van Arendonk** who competed in the
Rotorua Dance Competitions in the school holidays.
All students did extremely well coming away with
medals and placings for various routines.

Students can

LEARN TO PLAY CHESS

with Mr Shaw at lunchtime on Fridays

TWEENS & TEENS TOOLBOX COURSE (12+ YEARS)

We will show you that although these years may
be challenging, they can actually be some of the
best years of your life – and theirs!

Six week course starts 7.30 pm – 9.30 pm,
Wednesday 16 May 2012, the Children's Village,
Lynmore.

Contact: Dee Horne, Rotorua Area Toolbox
Coordinator RotoruaTBX@theparentingplace.com,
07 345 5447/027 6139067.

SUCCESSMAKER-EXTRA TUITION AVAILABLE FOR LITERACY AND NUMERACY – Thursday Lessons

The College offers tuition on a highly successful, individualised computer programme called 'SuccessMaker'.
The numeracy tuition is suited to students from Year 3 to Year 8, and the literacy tuition is suited to students
from Year 3 to Year 10. The students work at their own pace, and there is plenty of positive encouragement
and sight and sound stimulation to keep them interested. Lessons are held in C17 on Thursdays from 3.15 –
4.15pm. Lessons starting on Thursday 3 May to the end of the term will cost \$110. If you wish to supplement
your child's learning in English and/or Maths, please contact Natalie.erasmus@ipc.school.nz to reserve your
place.

TUTORING AVAILABLE for Years 7 - 10

FOR ENGLISH, MATHS, SCIENCE AND SOCIAL STUDIES

**A group of Year 13 students from the Academic Committee will be available in L5
during lunch times on Thursdays in Term 2**

AUTOMOTIVE COURSE STARTING MAY 8th

Waiariki Institute of Technology will be running a pre-trade automotive course beginning on Tuesday 8th May for Year 11-13s.

The course is worth 27 Level 2 NCEA credits and will run every Tuesday for 10 weeks (excluding school holidays), with the last day being 24th July.

If your son or daughter would like to enrol on this course please ask them to call to the Careers office or Gateway office asap.

2012 ENTERTAINMENT BOOKS

The JPC PTA is once again selling the Waikato & Bay of Plenty Entertainment™ Book. Full, with over 350 valuable offers and discounts for a number of cafes, restaurants, activities and hotels which you can use through to June 2013.

A flyers & order forms have been sent home, with books available immediately for those who want to take advantage of these exceptional offers and support the school at the same time.

Orders can be placed in the box at the accounts office and must include payment of \$55 by cash, cheque made to "JPC PTA" or credit card details. Further queries please contact Teresa Everson 345 8544.



AT LAST, YEAR 12 CAMP WEEK HAS ARRIVED

REMINDER: students need to be at school no later than 8am **TOMORROW** in order to pack equipment into vehicles to leave by 8.30am.

Those students not attending camp will be expected to attend school. Thank you.

Mrs Brewer - Year 12 Dean

A youth group for our Catholic Parishes
Meets every second Sunday - next meeting

Sunday 6th May
after the 5pm Mass,
at St Mary's Church, Seddon St.
For Years 9-13

Any enquiries, contact Darren Florence,
3666 796



SURF LIFESAVING QUALIFICATION

The Mount Maunganui Surf Lifesaving Club is running the Bronze Level course through JPC for anyone over the age of 14.

For more information make contact with Mrs Richardson xtn 8129 or

michelle.richardson@jpc.school.nz

N.Z'S GOT TALENT (*Rotorua Auditions*) will be held at the Convention Centre on Monday May 28th from 4.00pm to 10pm.

This is an open audition which means you just turn up!! You will need to fill out an audition questionnaire which you will give to the judges during your audition. Download the questionnaire from the New Zealand's Got Talent Get Involved (TVNZ) website.

Any queries, contact Mr Czyrek in the Music Suite
matt.czyrek@jpc.school.nz or xtn 8824

CAREERS NEWSLETTER

The **NEW ZEALAND MEDICAL STUDENT'S ASSOCIATION** (NZMSA) is holding their annual conference in Rotorua this year. They are inviting interested secondary students from Rotorua to attend an afternoon of their conference, during which the students will have the opportunity to discuss with medical students what it is like to study in health, and find out about scholarships and options available for Rotorua students. Saturday 19th May 2-4.30pm. Rotorua Convention Centre. Please contact Sheryl Hewitson, Careers Advisor if you are planning to attend and would like more information ASAP.

ESITO (ELECTRICITY SUPPLY INDUSTRY TRAINING ORGANISATION) TASTER COURSE

ESITO is offering students who are 16 years or older the chance to experience the electricity supply industry first hand at a Taster Course running in the July school holidays (dates to be confirmed), at Wintec in Hamilton.

Students will spend up to five days taking part in a range of hands-on activities e.g working at heights, using tools in a workshop and site visits to electricity supply companies. All safety gear is provided and every student will be given a free pair of safety work boots, which they get to keep.

Places in all four courses are limited. Applicants must be at least 16 years of age, have NCEA Level 1 and be available to attend an interview. Interviews are normally face-to-face, but depending on the student's location, phone interviews can be arranged.

For more information and application forms, check out the [Career Centre](#) on ESITO's website or call Gabrielle Riley on 0800 4 ESITO. More Tasters will run in the October school holidays in Auckland, Ngaruawahia, Kawerau and Napier.

ROTORUA CAREERS EXPO

Thursday	May 24 th	4.00-7.00pm	Parents Evening, Rotorua Events Centre
Thursday/Friday	May 24 th / 25 th		Rotorua Careers Expo, Rotorua Events Centre.
			Year 10 – 13's will be attending during school time.

AUT PRESENTATION

AUT will be doing a Presentation to the Year 13's in the Common Room on Tuesday May the 1st at 9.45am.

WAIKATO UNIVERSITY OPEN DAY: FRIDAY MAY 11th

Year 13 students will be attending the Waikato University Open Day Friday the 11th May.

FIEA FORESTRY CAREERS EVENING

18th July at the Distinction Hotel Rotorua

Any Year 13's that were interested in either doing a degree in Forestry at Canterbury or a Diploma at Waiariki, please see the Careers Department for more details.

ROTARY AUSTRALIA / NEW ZEALAND STUDENT EXCHANGE 2013

Applications are now being taken for the above student exchange for 2013. Applications close 30th June.

For more information on any of the above, contact: **Sheryl Hewitson** – Careers Department
Xtn 8823 or Sheryl.hewitson@ipc.school.nz

FROM THE MATHEMATICS DEPARTMENT

2012 AUSTRALIA MATHEMATICS COMPETITION

The 2012 Australia Mathematics Competition will be held on Thursday the 2nd of August. This competition is open to all students from year 7 to 13. The cost is \$6.50.

A registration form is at the bottom of this page. Alternatively students can pick up a form from the student counter.

Payment for the competition must be made to Mrs Boyce in the accounts office by **Monday the 7th of May**. Late entries will not be accepted. Please enclose registration with payment and give to the accounts office. Thank you for your support

MATHSBUDDY: Parent/Caregiver INFORMATION evening

The Mathematics faculty would like to warmly invite all parents & caregivers to an information evening about Maths Buddy homework on Thursday the 3rd of May at 5pm in the Technology suite above the library.

You will be given the opportunity to access your child's homework record and progress in Mathematics. Staff will be on hand to assist.

Lara Cordonni – **Mathematics Faculty**
Xtn 8814 or lara.cordonni@ipc.school.nz

2012 AUSTRALIA MATHEMATICS COMPETITION

Thursday 26th of April 2012

Dear Parent/Guardian

The 2012 Australia Mathematics Competition will be held on Thursday the 2nd of August. This competition is open to all students from year 7 to 13. The cost is \$6.50.

Payment for the competition must be made with Mrs Boyce in the accounts office by **Monday the 7th of May**. Late entries will not be accepted. Please enclose registration with payment and give to the accounts office.

Thank you for your support

Lara Cordonni
Mathematics Faculty

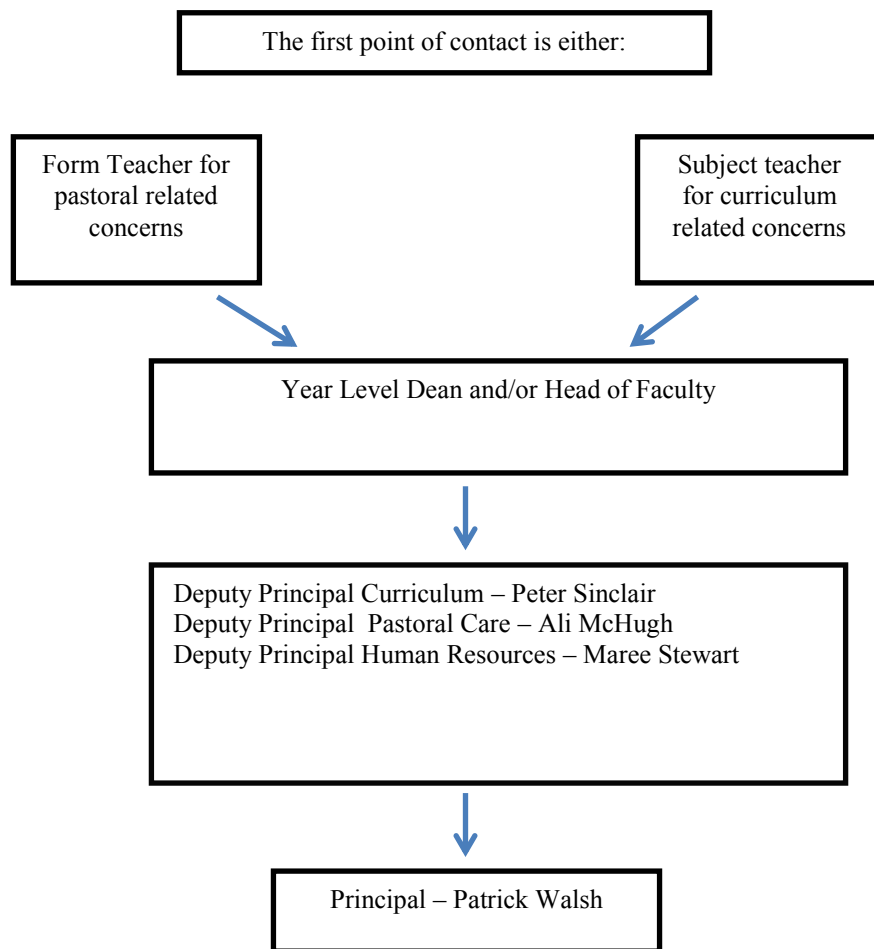
Registration Australia Mathematics Competition

Name _____

Form Class _____

JPC Community Communication Process

If a parent wishes to communicate with teachers please refer to this flow diagram.



The preferred modes of communication are by email or by phone. All staff email addresses are first.name.surname@ipc.school.nz. A phone list is available on the school website.

John Paul College staff will reply to your communication when practicable. If you have not received a reply within 2 working days please resend and copy it to the Dean or Head of Faculty.

If your communication is still unresolved please contact the appropriate Deputy Principal.

WHITE CLOUD WORLDS

NEW ZEALAND SCIENCE FICTION AND FANTASY ART



Stephen Crowe Inghram's *Approach*, 2009. Copyright the artist

28 APRIL - 29 JULY 2012
ROTORUA MUSEUM

Check out this ground-breaking exhibition of science fiction and fantasy art, created by over 20 New Zealand artists and illustrators for movies, graphic novels and games around the world.

The exhibition is a partnership project developed by The Dowse Art Museum and Ignite Inc. (artist Paul Tobin and project manager Kate Jorgensen).



www.rotoruamuseum.co.nz

Ph: 07 350 1814
Open 9am-5pm daily
FREE entry for Rotorua
residents with ID



ROTORUA
museum
Te Whare Taonga o Te Arawa
ART | CULTURE | HERITAGE

**AFTER SCHOOL HORSE
RIDING PROGRAMMES**
available Monday to Friday
(numbers dependent)

**\$20 – includes pick up from school
@ 3.10; drop off @
Bunnings Carpark at 5.30p.m**
OSCAR approved funding is available

Register with Wendy 3323 771



KayHumphriesTravel

Kay Humphries
Travel Broker

Travel Managers Group Limited
Phone: +64 7 883 7368
Email: kayh@travelmanagers.co.nz

www.kayhumphriestravel.co.nz

TAAZ bonded & IATA licensed
A division of Travel Managers Group Ltd, P.O.Box 12,
Shortland Street, Auckland, New Zealand.

KEEP YOUR CHILDREN COSY WHEN IT'S COLD AND SUPPORT YOUR SCHOOL

A chill is in the air and winter is fast approaching bringing with it the cold and wet weather. But don't worry; Leishman Electrical would like to offer you a fantastic opportunity to keep toasty warm while also Supporting your Schools. Every time a heat pump is purchased from Leishman's between 15th March & 30th August 2012, \$100 will be donated to your schools fundraising efforts, so not only will you be keeping your family warm throughout the winter months, you will help your schools to save money. And, if you purchase your new heat pump before 30th April 2012 you will also go into the draw to win a brand new Suzuki Swift GLX car courtesy of Fujitsu's "Win Some Fun Promo".

**Call Rob today on: 347 2786 for your free in home consultation and enhance
both your home and your children's schools.**

Terms and Conditions apply.



Prices start at \$6/week incl GST

Suitable for

- Furniture
 - Small/large house lots
 - Boats, cars, caravans
 - Goods & document overflow
 - Mini workshop/office
- Monitored electronic security
Fire rated units**

Painting Decks & Fences Repairs



Neil & Michelle McIntyre
P O Box 7384
Te Ngae
ROTORUA

Michelle: 021 223 1104
Neil: 021 223 1107
Office: (07) 3454 180
Email: namp@extra.co.nz

Kitchen & Bathroom Renovations & Lots more

For all your property maintenance

HEARING PROTECTION MADE ON THE SPOT

- * Comfortable
- * Reliable
- * Reusable
- * Waterproof

**Work, Play, Sleep and Swim
in your very own Grade 5 earplugs**

PLUGZ 4 LUGZ

Grant Rowles, Rotorua
(07) 348 0908 or 027 275 6848

www.earmold.com.au for more info

"Hear today, gone tomorrow without adequate hearing protection"



This space is available for your
advertisement for just \$5 per weekly
insertion.

Make contact with
sue.rowles@ipc.school.nz
for more details

This space is available for your
advertisement for just \$5 per weekly
insertion.

Make contact with
sue.rowles@ipc.school.nz
for more details

This space is available for your
advertisement for just \$5 per weekly
insertion.

Make contact with
sue.rowles@ipc.school.nz
for more details